

#9842

3 Bedroom Villa For Sale Limassol

📍 Agios Athanasios, Limassol




€827,000 +VAT





Overview

Specifications

Bedrooms		Bathrooms		Covered	
 3		 2		 139 m ²	
Type		Detached Villa			
Showers		1			
Toilets		3			
Plot		217 m ²			
Status		Off plan			
Year of construction		2027			
Energy efficiency rating		 A			

Description

For sale: a stunning detached villa off plan, featuring an impressive internal space of 139 m2. This modern residence boasts 3 spacious bedrooms and 2 well-appointed bathrooms, perfect for families seeking comfort and style. Located on the 1st floor of a two-story building, the villa is equipped with an elevator for easy access. Built in 2027, this home prioritizes energy efficiency with a rating of A.

Situated in the desirable area of Agios Athanasios, residents will enjoy a vibrant community with a mix of amenities such as shops, restaurants, and parks. The area is known for its picturesque surroundings and convenient access to the highway, making it easy to explore the beautiful coastline nearby. Enjoy breathtaking sea views from your villa while relaxing in this gated complex featuring a communal swimming pool for leisure and social gatherings.

This property combines modern living with serene surroundings, making it an ideal choice for those looking for both comfort and luxury. For more information or to schedule a viewing, please contact Smart Move Online today.

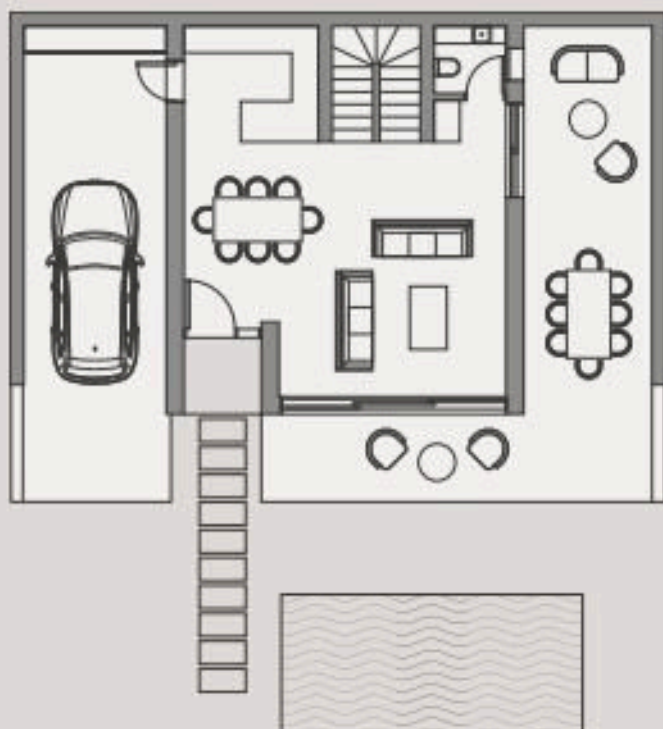
Floor plans

3 Bedroom House Type A

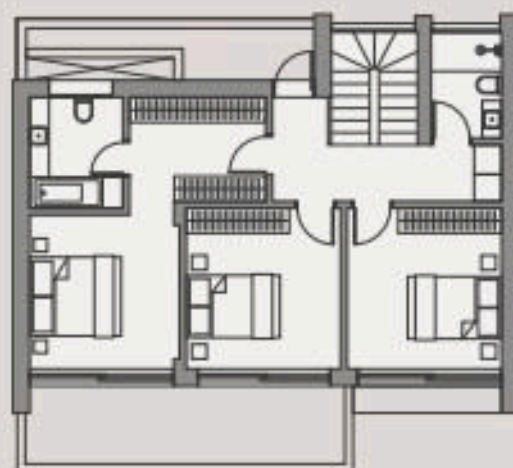
HOUSES:

A1, A2, A3, A4, A5, A6, A7

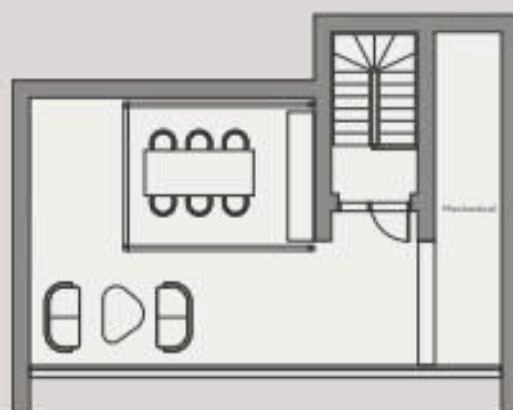
C1, C2, C3, C4, C5, C6, C7



GROUND FLOOR



FIRST FLOOR



ROOF GARDEN

Plot size	217-423m ²
Internal area	144m ²
External covered areas	49-52m ²
External uncovered areas	39-51m ²
Roof Garden	61m ²
Garden	64-238m ²
Total Covered Area	207-210m ²
Swimming pool	Optional
Bedrooms	3
Bathrooms	3

Living / Kitchen	6.95 x 6.40m
Bedroom 1	3.30 x 5.85m
Bedroom 2	3.40 x 3.55m
Bedroom 3	3.40 x 3.55m

The areas are indicative for this house type and may vary according to the plot.

Additional information





Facilities

Aircondition, Central system	Clubhouse	Elevator
Gated complex	Heating, Provision	Parking, Covered
Pool, Communal	Solar water heater	

Features

24-hour security	Double glazing	Easy access to highway
Easy access to main roads	Entrance gate	Fitted wardrobes
Garden	Luxury specifications	Modern design
Sea view	Veranda	

Distances

Amenities  500 m	Airport  64 km	Sea  3 km
Public transport  500 m	Schools  400 m	