

#9819

# Office For Rent Limassol

📍 Kollonakiou, Potamos Germasogeia, Limassol

**€7,500** /month







# Overview

## Specifications

Covered

 **290 m<sup>2</sup>**

|         |        |        |                    |
|---------|--------|--------|--------------------|
| Type    | Office | Plot   | 290 m <sup>2</sup> |
| Toilets | 7      | Status | Key ready          |

## Description

This spacious office for rent is now available in the highly sought-after area of Potamos Germasogeia, Limassol. Spanning 290 square meters, this key-ready space is ideal for businesses looking for a convenient and professional environment. The layout is versatile, allowing for various configurations to suit your specific needs.

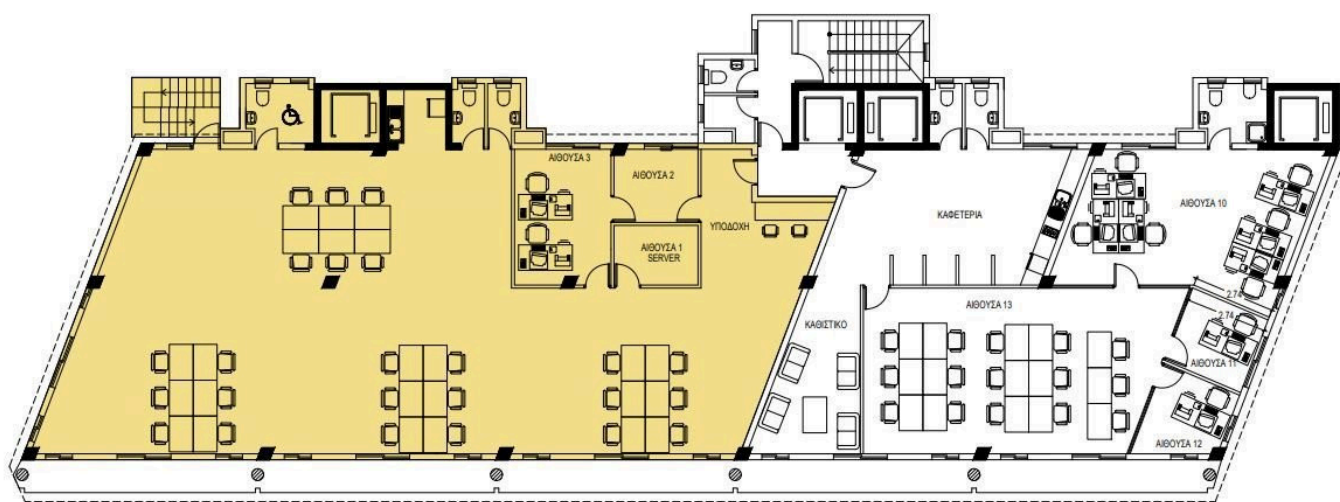
Potamos Germasogeia, Kollonakiou is known for its vibrant atmosphere, offering a blend of residential and commercial properties. The area is well-connected, situated close to the highway for easy access to surrounding locations. You will find a variety of amenities nearby, including cafes, restaurants, and shops, providing everything you need just a short distance away.

The office is equipped with a central air conditioning system, ensuring comfort throughout the year. With its prime location and modern features, this office space is a perfect choice for your business needs.

This property is advertised by Smart Move Online. Contact us today to arrange a viewing and seize the opportunity to establish your business in this attractive area.



# Floor plans



# Additional information

## Facilities

Aircondition, Central system

Parking, Uncovered

Solar water heater

## Features

Closed offices

Double glazing

Easy access to highway

Easy access to main roads


Near amenities

Near bus route


Reception

## Distances


Amenities

 200 m


Airport

 60 km


Sea

 1 km

Public transport

 100 m

Schools

 500 m