

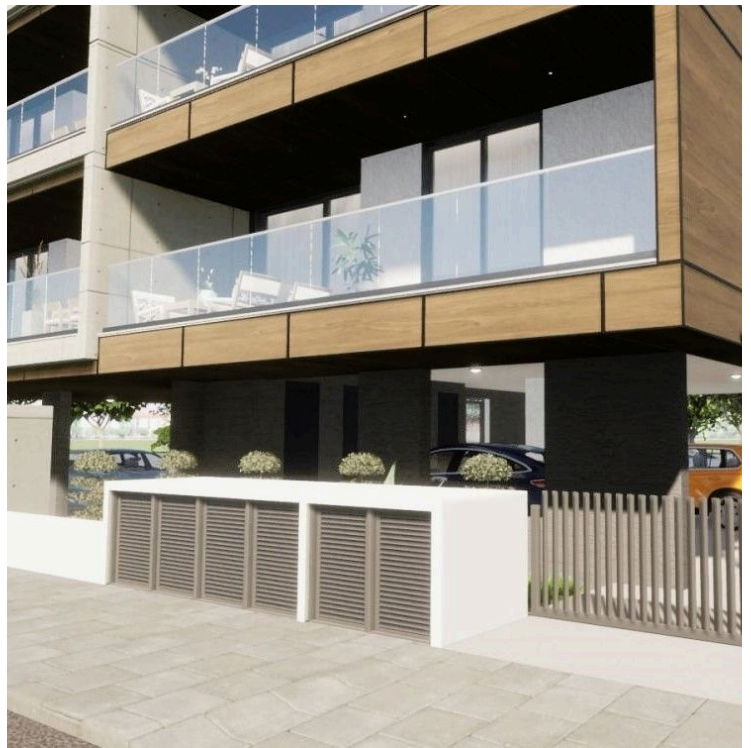
#9320

# 2 Bedroom Apartment For Sale Limassol

📍 Agios Ioannis, Town Centre, Limassol

€360,000 +VAT





# Overview

## Specifications

Bedrooms

 2

Bathrooms

 1

Covered

 80 m<sup>2</sup>

Type	<b>Apartment</b>
Showers	<b>1</b>
Toilets	<b>3</b>
Covered veranda	<b>21.7 m<sup>2</sup></b>

Uncovered veranda	<b>105.3 m<sup>2</sup></b>
Garden	<b>3.6 m<sup>2</sup></b>
Status	<b>Off plan</b>
Year of construction	<b>2026</b>

## Description

An exquisite residential building located in the vibrant Agios Ioannis area at the heart of Limassol. Perfectly positioned less than 700 meters from the beach and under 1 kilometer from the bustling Limassol Marina.

It offers unparalleled access to the best the city has to offer. This prime location is surrounded by significant development, with numerous high-rise buildings emerging, making it the epicenter of growth and modern urban living.

It features eight meticulously designed apartments, including three luxurious three-bedroom flats and five elegant two-bedroom flats. Adding to the allure, the two apartments on the fourth floor boast their own private roof gardens with exclusive swimming pools, offering residents a high level of luxury and breathtaking views of the Limassol seafront. Each apartment is crafted with a keen eye for detail, blending contemporary design with functionality to create spaces that are as comfortable as they are stylish.

Experience the epitome of modern living with state-of-the-art amenities and sophisticated interiors. Whether you are relaxing in your spacious living room, preparing a meal in your sleek modern kitchen, or enjoying the serene views from your private balcony, every moment at Retina is designed to elevate your lifestyle.

It is more than just a place to live; it's a vibrant community in the heart of Limassol. Don't miss the opportunity to be part of this exclusive development. Embrace the luxury, convenience, and dynamic energy of where your dream home awaits.

# Floor plans



ΚΑΤΟΨΗ ΙΣΟΓΕΙΟΥ



ΚΑΤΟΨΗ 1ου ΟΡΟΦΟΥ

# Additional information

## Facilities

Aircondition, Split system

Elevator

Heating, Provision

Parking, Covered

Solar water heater

Storage

## Features

Drawing room

Easy access to main roads

En suite shower

Fitted wardrobes

Guest WC

Modern design

Near amenities

Near bus route

Rental potential

Veranda, large

Walking distance to beach

## Distances

Amenities

 300 m

Airport

 60 km

Sea

 700 m

Public transport

 300 m

Schools

 500 m