

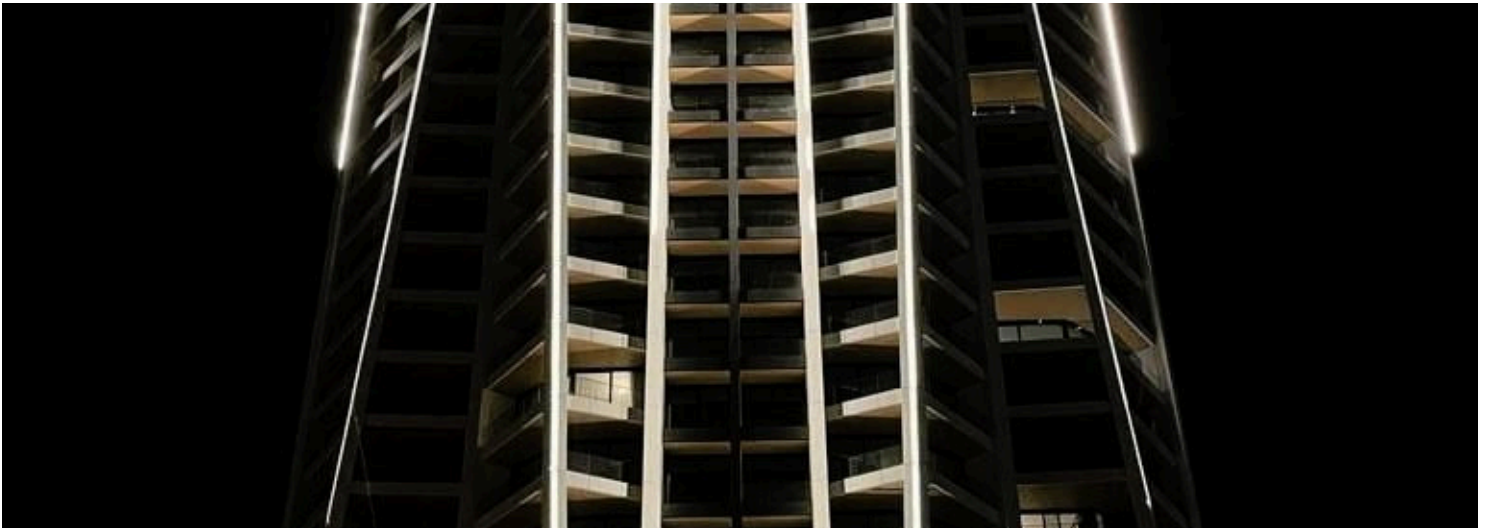
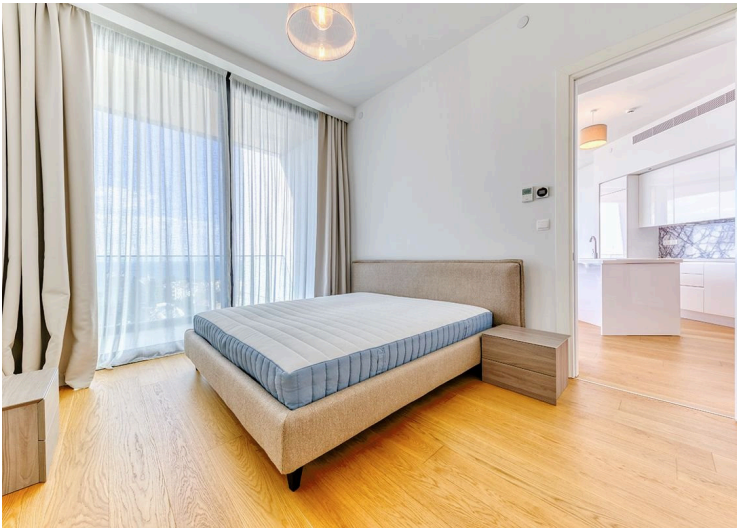
#9150

2 Bedroom Apartment For Rent Limassol

📍 Dasoudi, Potamos Germasogeia, Limassol



€4,900 /month ~~€5,500~~





Overview

Specifications

Bedrooms	Bathrooms	Covered	
 2	 2	 90.5 m ²	
Type	Apartment	Status	Key ready
Toilets	2	Furnished	Fully furnished
Plot	119 m ²		

Description

Unique residential high-rise complex of 25 floors with hotel facilities developed with the world’s latest architecture & planning trends in mind. Residents will enjoy unbelievable see panoramas and the exceptional atmosphere of comfort and relaxation in the elegant gated community with exceptional in-door amenities like a concierge, SPA, common outdoor pool, heated indoor pool, gym, tennis court, green area, and underground parking.

The complex blends ideally in the urban landscape of Limassol’ sought-after tourist area thanks to the well-balanced mix of sophistication, comfort, and landmark design by a leading London architecture studio. Limassol’s best sandy beaches, shops, restaurants and other holiday pleasures are in a stone’s throw. The development comprises one-, two-, three- and four-bedroom luxurious apartments, penthouses and duplexes (sky houses) with private pools on the roof.

Each unit has 3.15 m height ceilings and top-quality finishings to astound the most demanding buyer. Most of the apartments offer breathtaking views of the Mediterranean Sea, Limassol city and its picturesque hilly suburbs.

The rent price is 5500 euros per month including common expenses + 2 security deposits against damages.

This property can be rented as an office!

Additional information

Facilities

Aircondition, Split system
Heating, Underfloor
Solar water heater

Elevator
Parking, Underground

Gated complex
Pool, Communal

Features

Double glazing
High ceilings
Near amenities
Veranda

Easy access to main roads
Kitchen appliances
Near bus route
Walking distance to beach

Fitted wardrobes
Luxury specifications
Sea view

Distances

Amenities

 200 m

Public transport

 100 m


Airport

 60 km

Schools

 500 m

Sea

 300 m