

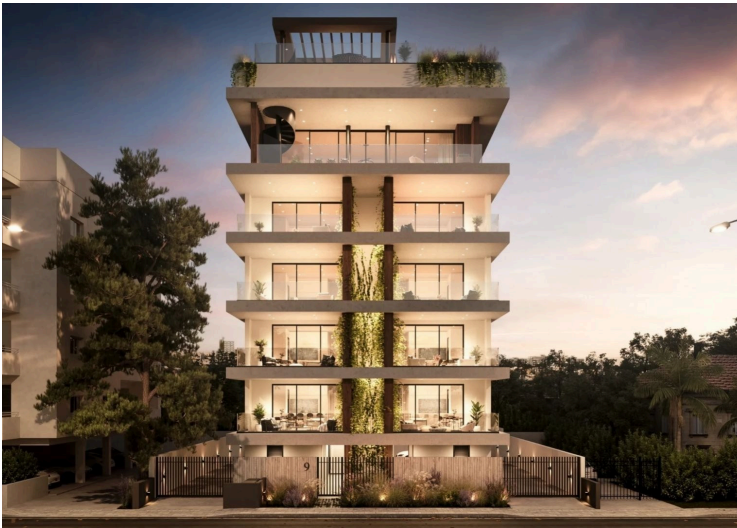
#8423

2 Bedroom Apartment For Sale Limassol

📍 Agia Zoni, Town Centre, Limassol





€510,000 +VAT





Overview

Specifications

| | | | | | |
|---|--|---|--|---|--|
| Bedrooms | | Bathrooms | | Covered | |
|  2 | |  1 | |  82 m ² | |
| Type | | Apartment | | Status | |
| Toilets | | 2 | | Completed | |
| Plot | | 107 m ² | | Year of construction | |
| Covered veranda | | 25 m ² | | 2024 | |
| | | | | Energy efficiency rating | |
| | | | |  A | |

Description

For sale a modern two bedroom apartment located in the famous area of Agia Zoni in the heart of the town. It will have easy access to the commercial Makarios Avenue and within walking distance of the beach and the beachfront road.

It will be surrounded by all kinds of residential amenities.

Total number of floors 5. There will be two apartments on each floor.

This property features:

- Provision for underfloor
- Provision for A/C bedrooms
- Concealed A/C units in the living room area
- Concealed toilets
- Italian bathroom ceramic tiles
- Engineered parquet floor
- Covered parking: 1
- Storage: 1
- Internal area: 83m2
- Covered verandas: 25m2

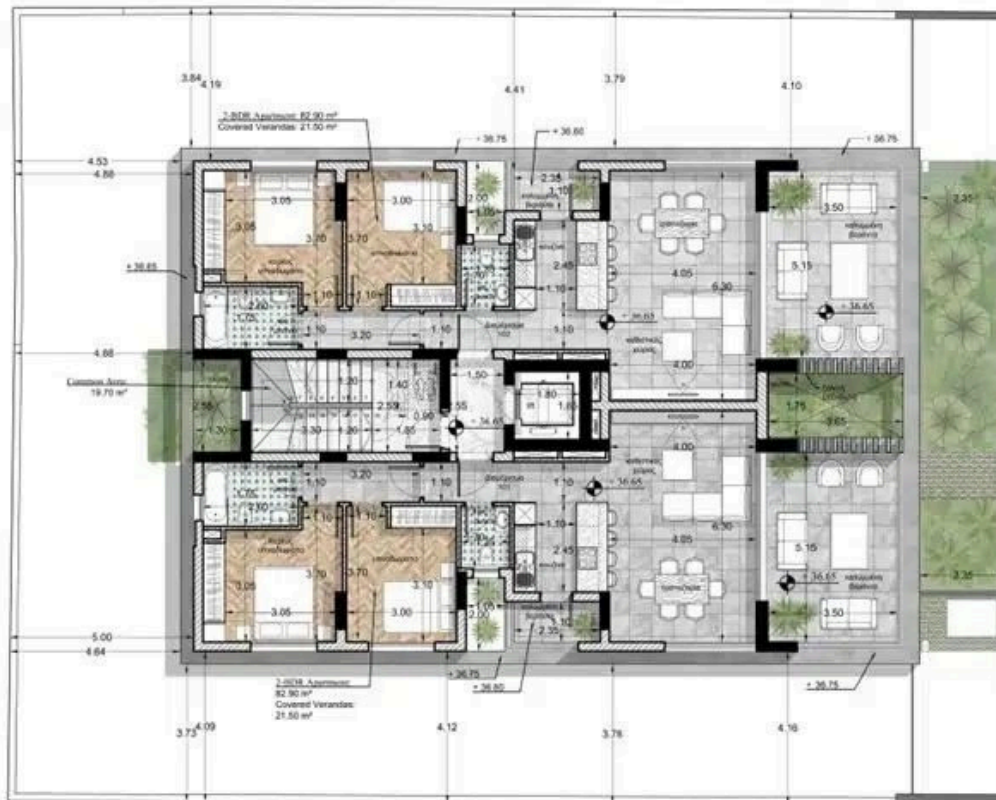
Floor plans

Layout approach

1st Floor / 2nd Floor / 3rd Floor / 4th Floor:

19.70m^2 (common area) + 82.90m^2 (2-BDR) + 82.90m^2 (2-BDR) = 185.50m^2

Covered Verandas: 21.50m^2 (2-BDR) + 21.50m^2 (2-BDR) = 43.00m^2 (23.18%)



Additional information






Facilities

| | | |
|-------------------------|--------------------|--------------------|
| Aircondition, Provision | Elevator | Heating, Provision |
| Parking, Covered | Solar water heater | Storage |

Features

| | | |
|---------------------------|---------------------------|----------------|
| Double glazing | Easy access to main roads | Guest WC |
| Luxury specifications | Modern design | Near amenities |
| Near bus route | Pressurized water system | Veranda, large |
| Walking distance to beach | | |

Distances

| | | |
|---|--|---|
| Amenities  500 m | Airport  60 km | Sea  600 m |
| Public transport  200 m | Schools  500 m | |