

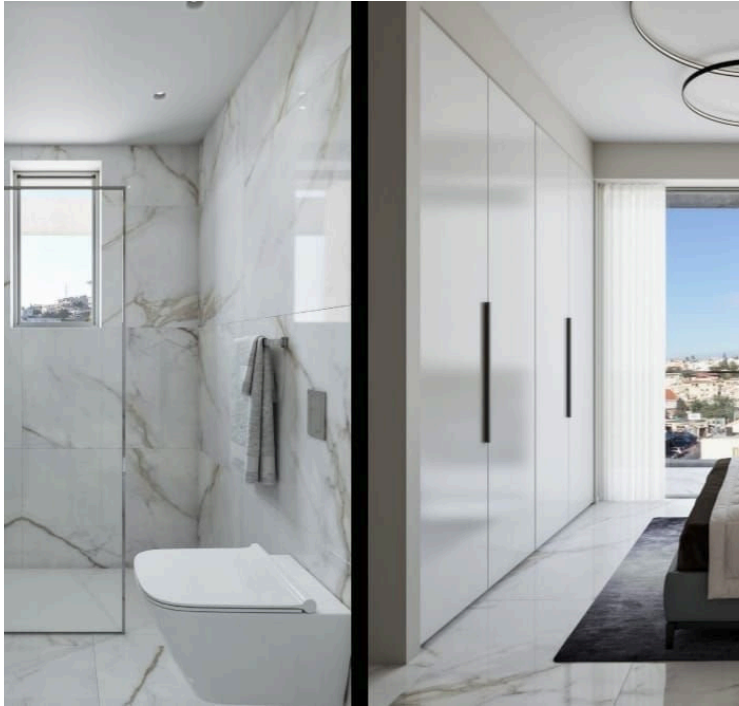
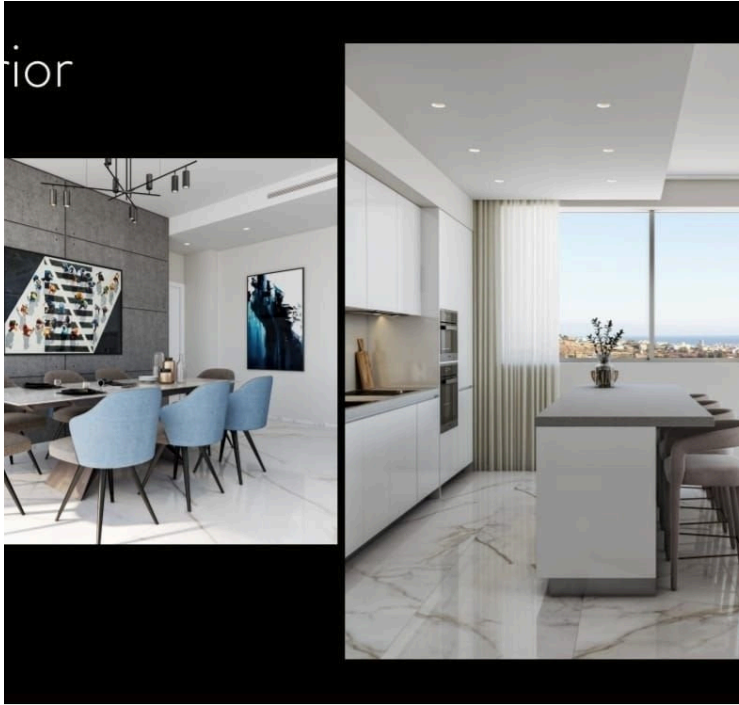
#8232

2 Bedroom Apartment For Sale Limassol

📍 Agia Fyla Above Highway, Limassol


€365,000 +VAT





Overview

Specifications

| | | | | | |
|---|--|---|--|---|--|
| Bedrooms | | Bathrooms | | Covered | |
|  2 | |  2 | |  85 m ² | |
| Type | | Apartment | | | |
| Toilets | | 2 | | | |
| Plot | | 174 m ² | | | |
| Status | | Under construction | | | |
| Year of construction | | 2024 | | | |
| Energy efficiency rating | |  A | | | |

Description

For sale a two bedroom apartment in the residential area of Ayia Phylaxeos, with easy access to the highway and beautiful views of Limassol.

The apartment is part of a building with 5 apartments in total, it is an exclusive and wise choice for a home or investment.

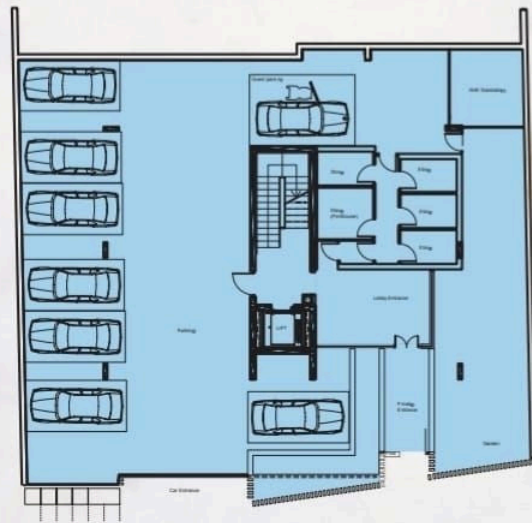
It is a Grade A energy efficient building comprises four spacious 2-bedroom apartments and one grand 3-bedroom penthouse with its own private roof garden, all with unobstructed panoramic views of Limassol and the sea.

The 2-bedroom apartments offer ample living space and verandas, with the first floor apartments offering an additional 45m² - 65m² of garden space, while our penthouse with private roof garden boasts 296.5 m².

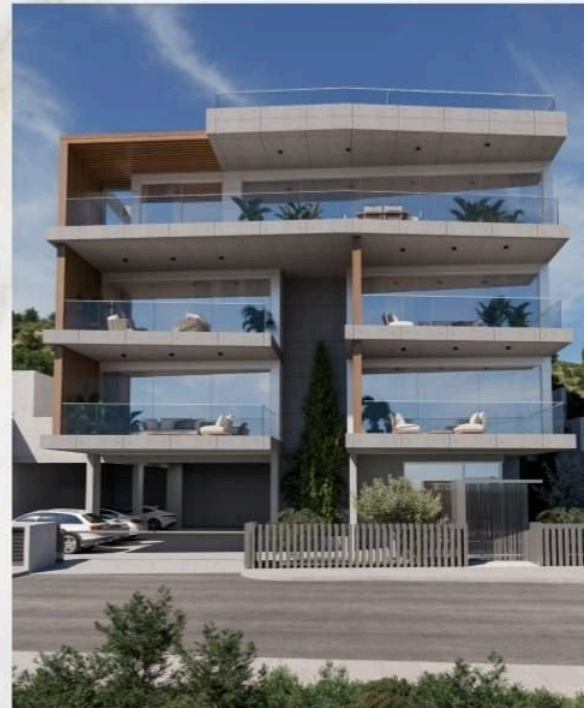
Wonderfully located so that its residents enjoy the serenity of living in the outskirts of Limassol and the accessibility of being 5km from the city centre and the sea, all apartments are carefully designed for luxury and privacy.

Floor plans

Plans



Main Road



| Flat 101 | | Flat 102 | |
|-------------------|-----|-------------------|-----|
| BEDS | 2 | BEDS | 2 |
| BATHROOMS | 2 | BATHROOMS | 2 |
| PARKING SPACES | 1 | PARKING SPACES | 1 |
| COVERED AREA | 85 | COVERED AREA | 85 |
| COVERED VERANDA | 24 | COVERED VERANDA | 24 |
| UNCOVERED VERANDA | 65 | UNCOVERED VERANDA | 45 |
| STORE ROOM | 4 | STORE ROOM | 4 |
| TOTAL AREA | 178 | TOTAL AREA | 158 |

18



| Flat 201 | | Flat 202 | |
|-------------------|-----|-------------------|-----|
| BEDS | 2 | BEDS | 2 |
| BATHROOMS | 2 | BATHROOMS | 2 |
| PARKING SPACES | 1 | PARKING SPACES | 1 |
| COVERED AREA | 85 | COVERED AREA | 85 |
| COVERED VERANDA | 24 | COVERED VERANDA | 24 |
| UNCOVERED VERANDA | - | UNCOVERED VERANDA | - |
| STORE ROOM | 4 | STORE ROOM | 4 |
| TOTAL AREA | 113 | TOTAL AREA | 113 |

Additional information






Facilities

| | | |
|-------------------------|--------------------|--------------------|
| Aircondition, Provision | Elevator | Heating, Provision |
| Parking, Covered | Solar water heater | Storage |

Features

| | | |
|-----------------|------------------------|---------------------------|
| Double glazing | Easy access to highway | Easy access to main roads |
| En suite shower | Fitted wardrobes | Modern design |
| Veranda, large | | |

Distances

| | | |
|---|--|---|
| Amenities  500 m | Airport  60 km | Sea  6 km |
| Public transport  200 m | Schools  500 m | |