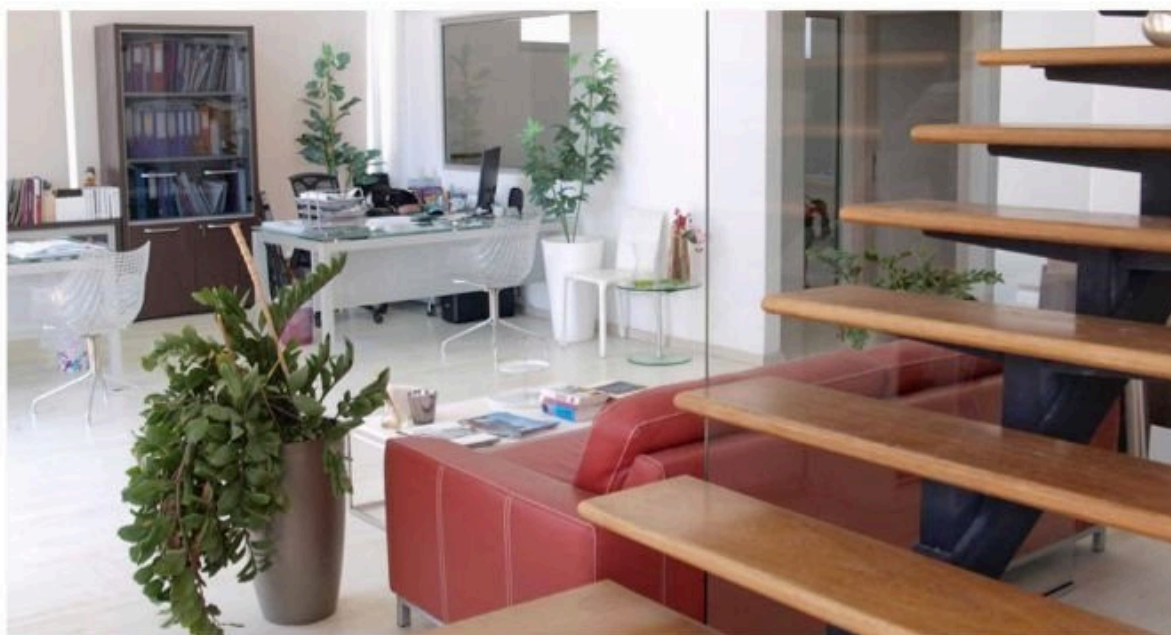


#6574

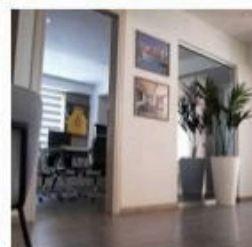
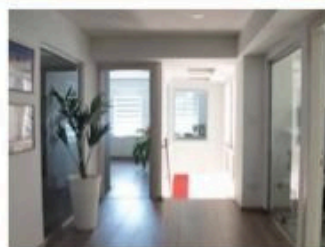
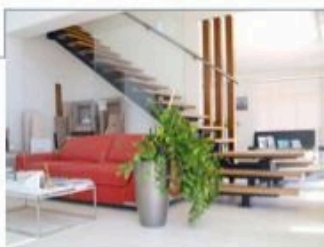
320m2 Office For Rent Limassol

📍 Polemidia, Polemidia, Limassol

€4,500 /month



GROUND FLOOR
office interior



Comfortable
Stylish
Functional

floor retail unit with mezza-
rd as an office area, with the
offering four corporate offices.

offers ample visitor parking
e ground floor, in addition to
erground parking facilities
accommodate the needs of

Overview

Specifications

Covered

 320 m²

Type	Office	Status	Key ready
Toilets	3	Year of construction	2006

Description

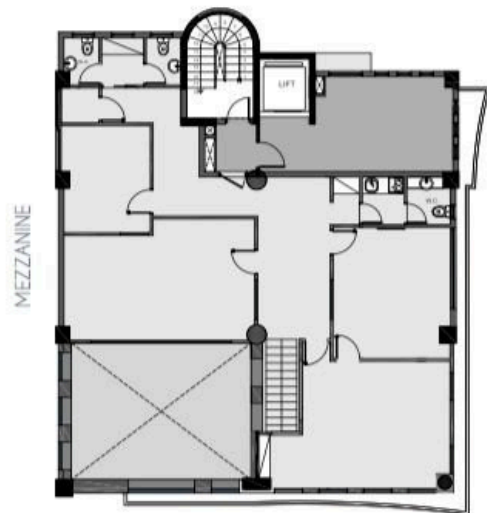
320m2 office space for rent in Polemidia, one of the main commercial roads in Limassol, Cyprus offering high visibility from all sides. Furthermore this modern commercial building is located close to Limassol's central business district, surrounded by an array of commercial office, Financial institutions and a large selection of showrooms.

The office has direct access to the city centre, seafront, Limassol marina, commercial port and motorway.

The ground floor retail unit with mezza- nine is utilized as an office area, with the above floors offering four corporate office.

The building offers ample visitor parking spaces on the ground floor, in addition to secured underground parking facilities sufficient to accommodate the needs of the tenants.

Floor plans



GROUND FLOOR & MEZZANINE
RETAIL UNIT
320m² COVERED AREA
525m² PLOT SIZE



Additional information

Facilities

Aircondition, Split system

Elevator

Parking, Underground

Features

CCTV

Double glazing






Fiber optics

Fire detector

Marble flooring

Raised floors

Distances

<div>Amenities</div> <div> 300 m</div>	<div>Airport</div> <div> 60 km</div>	<div>Sea</div> <div> 3 km</div>
<div>Public transport</div> <div> 200 m</div>	<div>Schools</div> <div> 500 m</div>	