

#6562

Luxury 5 Bedroom Villa Close to the Sea

📍 Argaka, Paphos



€3,000,000 ~~€3,500,000~~





Overview

Specifications

Bedrooms	Bathrooms	Covered
 5	 5	 435 m ²

Type	Detached Villa	Status	Resale
Toilets	6	Year of construction	2005
Plot	2500 m ²	Furnished	Unfurnished

Description

Villas "Evangelia" is a great place for a serene vacation. The area of the project offers magnificent breath taking views, endless sandy beaches with the cleanest sea water on the entire island, excellent restaurants and taverns, close proximity to the Akamas National Park.

It is a detached estate in a closed fenced and guarded area framed by natural adult pine trees, which includes two luxury villas with buildings and gardens, a staff building (two apartments and a covered equipped garage for two cars with a total area of 204 m2) and extensive green park for pedestrian pleasant walking. There is a private road leading to the automatic entrance gate of the estate, there is direct access to the sea from the project, which is located on the embankment of Cyprus, near the town of Latchi.

Distance to the sea shore walkway - 290 m,

Distance to the pedestrian zone with restaurants and taverns - 250 m,

Distance to the nearby gas station - 900 m,

Distance to the zone of industrial / grocery essential goods - 1 km

Distance to the nearby town of Polis - 6 km

Distance to Paphos city - 45 km

Paphos International Airport of Paphos - 58 km away.

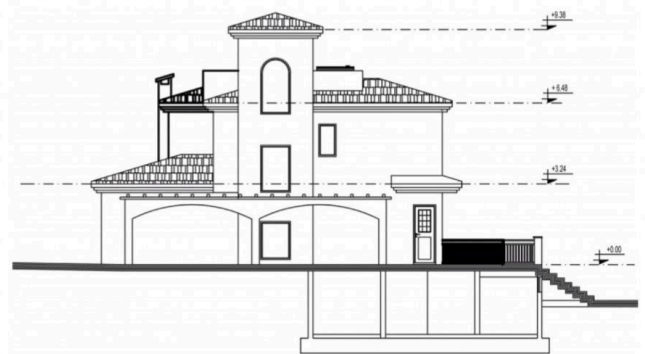
Villa Emilia 360 m2

5 bedrooms, 6 bathrooms, showers, sauna, balconies and verandas, cozy "corners" for secluded relaxation. The plot area is 2500 sq. m.

Floor plans

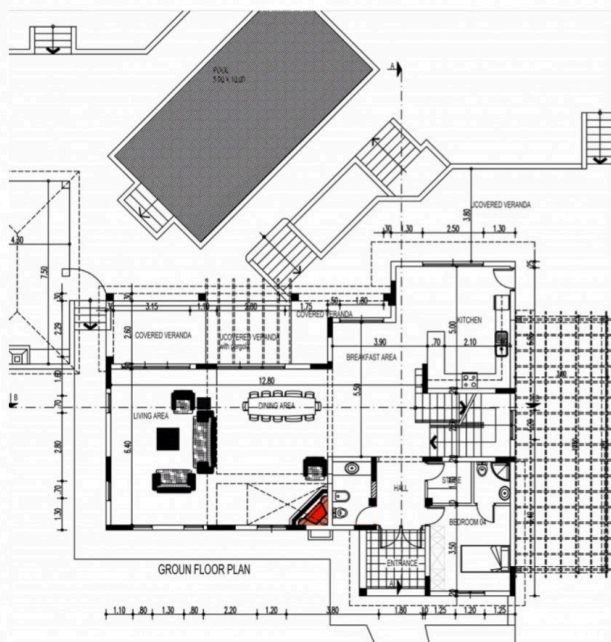
EVANGELIA VILLA

PLANS

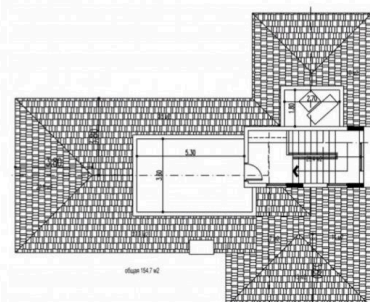
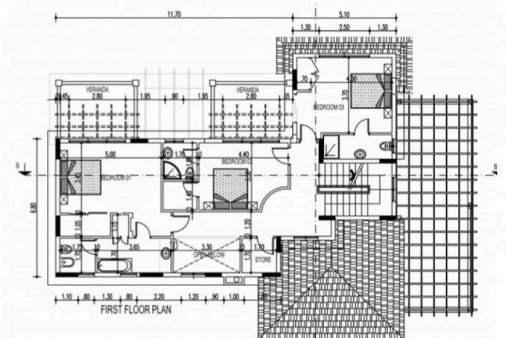


EVANGELIA VILLA

PLANS



FIRST FLOOR



Additional information





Facilities

Aircondition, Central system	Gated complex	Heating, Central
Landscaped garden	Parking, Garage, double	Pergola
Pool, Private	Solar water heater	Storage

Features

En suite shower	Entrance gate	Fitted wardrobes
Garden, large	Ground floor bedroom	Guest WC
Investment opportunity	Kitchen appliances	Luxury specifications
Near amenities	Pressurized water system	Quiet area
Rental potential	Sea view	Spacious rooms
Utility room	Veranda, back	Veranda, front
Veranda, large	Walking distance to beach	

Distances

Amenities  250 m	Airport  58 km	Sea  290 m
Schools  6 km		