

#6277

4 Bedroom Detached House + Floodlit Tennis Court

📍 Souni, Limassol




€390,000 ~~€485,000~~





Overview

Specifications

Bedrooms	Bathrooms	Covered
 4	 3	 240 m ²

Type	Detached Villa	Status	Resale
Toilets	3	Year of construction	1980
Plot	2150 m ²		

Description

A four bedroom detached house situated in the beautiful outskirt village of Limassol, Cyprus.

Property Features:

- Floodlit Tennis Court
- Views over countryside to sea
- Large fenced garden with shady flowering trees
- 15 Minutes to beaches
- Wonderful area for walking, jogging/mountain biking
- Fast access to highway to principal cities
- At 410 metres great climate
- Pharmacy & doctor in village plus taverna/pub
- Convenience stores in next door village
- 10 mins from supermarket, banks, tavernas/pubs & petrol stations

Details

Unique opportunity to have your own floodlit tennis court and a spacious mainly single-story house surrounded by a large mature garden on a plot of 2150 sqm

We hold the title deeds.

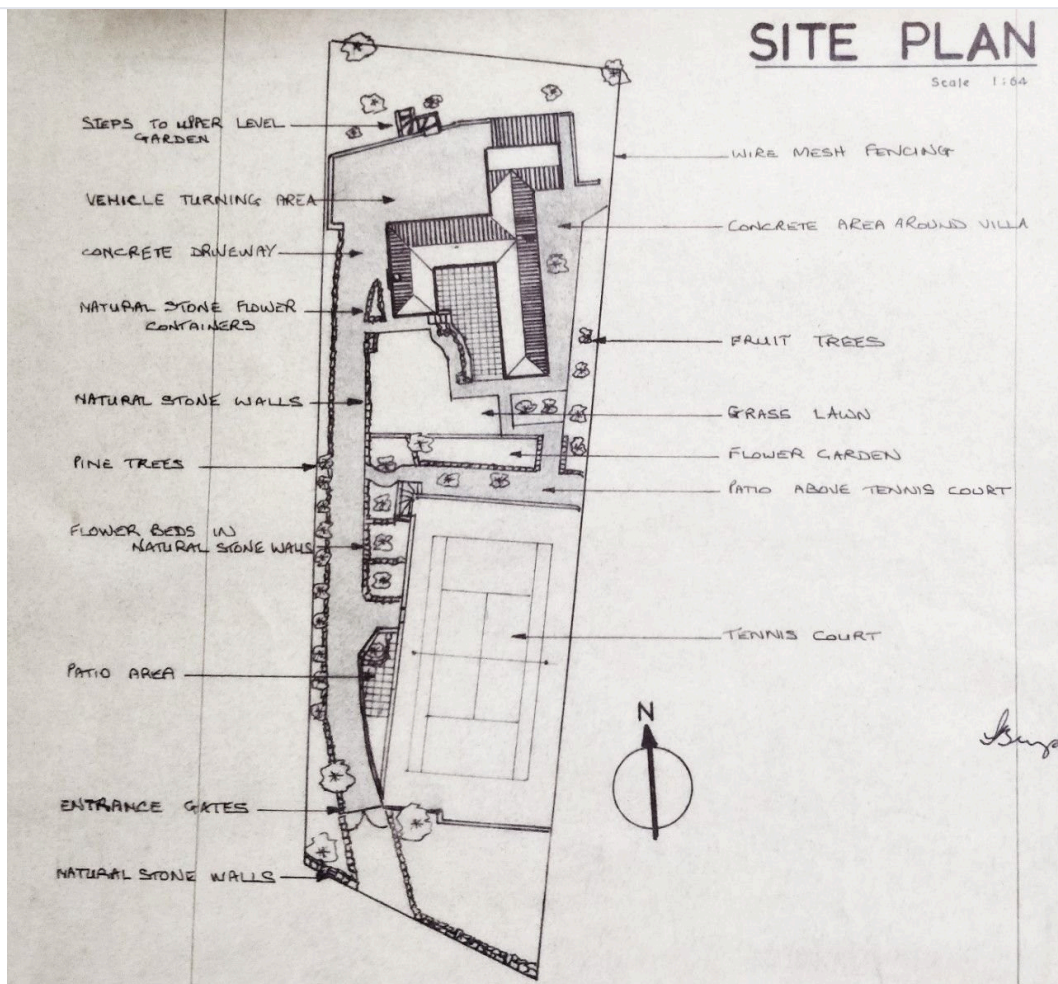
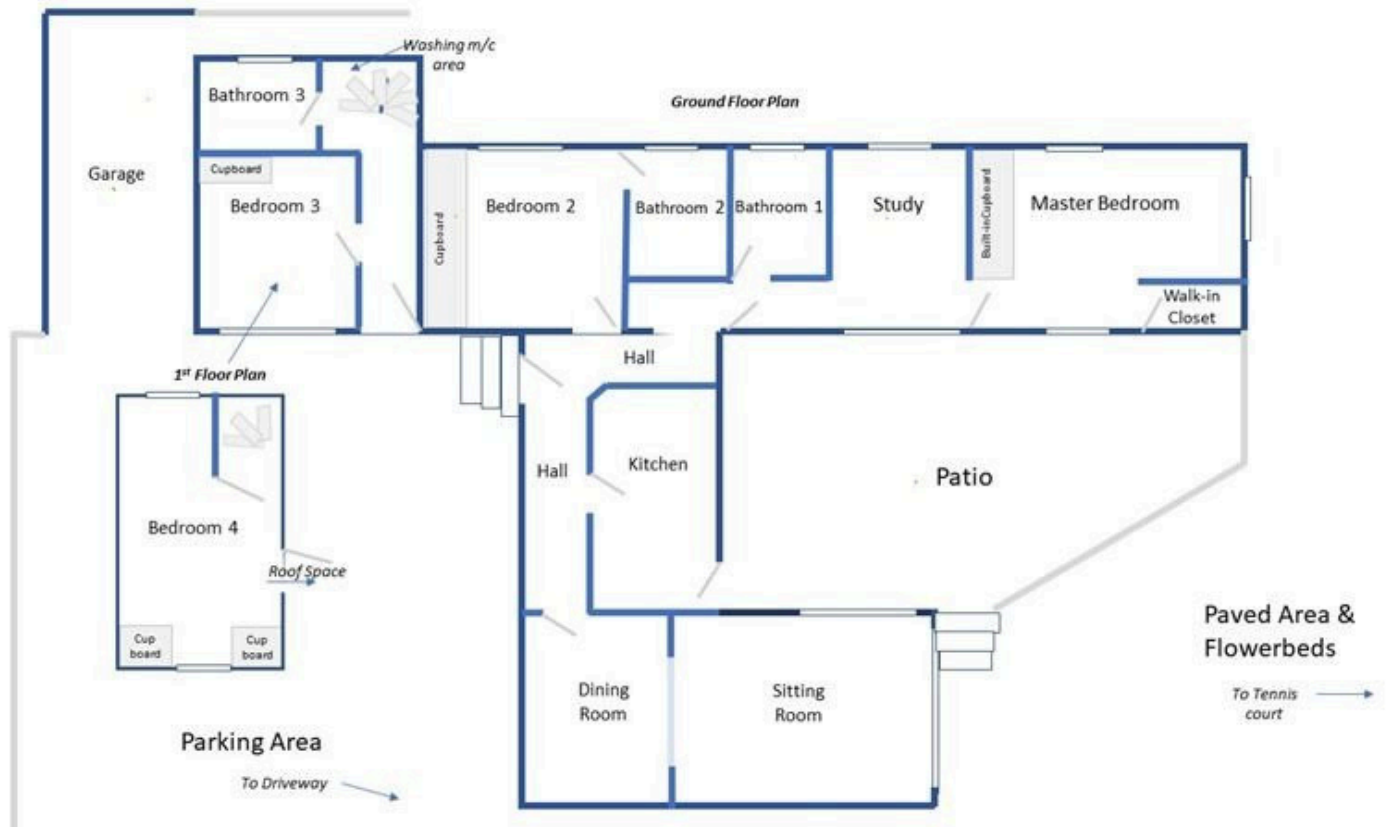
The accommodation comprises:-

- 4 Bedrooms with fitted cupboards and the Master Bedroom also has a walk-in closet.
- 3 Bathrooms (2 ensuite)
- Large Sitting Room
- Dining Room
- Study which is ensuite with Master bedroom which could be repurposed as another bedroom
- Large Patio (70 Sqm) attached to house with a cool shady area in the summer beneath a white bougainvillea.
- Walk-in storage in a capacious roof space

The house is built to UK standards with:

- cavity walls and double-glazing throughout.
- Air conditioners in all the bedrooms.

Floor plans



Additional information





Facilities

Aircondition, Split system	Landscaped garden	Parking, Uncovered
Pergola	Solar water heater	Tennis court

Features

Country view	Garden, large
--------------	---------------

Distances

Amenities  1 km	Sea  20 km	Public transport  1 km
Schools  5 km		