

#6090

# 2 Bedroom Semi-Detached Villa - Close To Golf Course

📍 Mandria, Paphos

€300,000 +VAT





# Overview

## Specifications

Bedrooms	Bathrooms	Covered
 2	 2	 123 m <sup>2</sup>
Type	Semi-Detached Villa	
Toilets	3	
Plot	159 m <sup>2</sup>	
Status	Off plan	
Year of construction	2024	

## Description

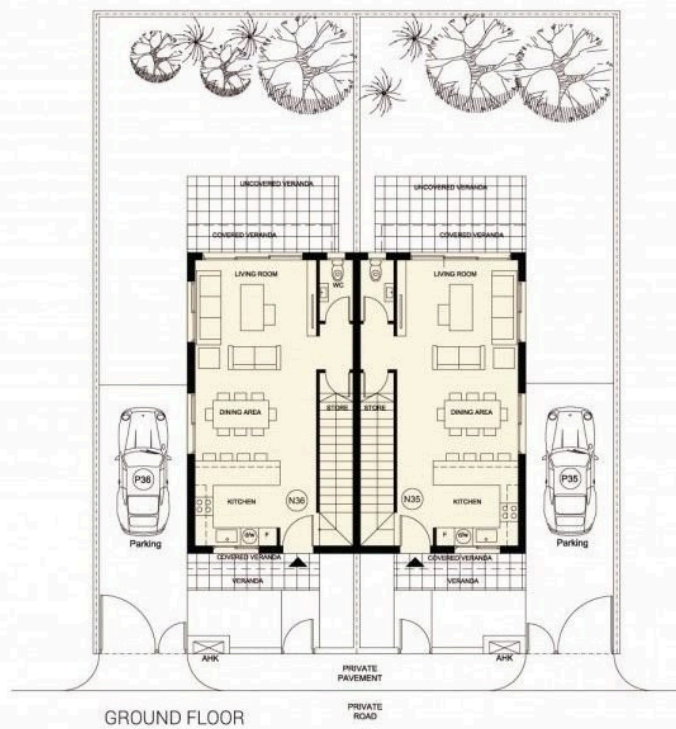
This is modern 2-bedroom semi-detached house for sale surrounded by beautiful landscapes in the village of Mandria in the district of Paphos, Cyprus.

- Spacious outdoor areas
- Covered verandas
- Tranquil setting
- En-suite showers in both Bedrooms
- Guest WC
- Parking
- Walking distance to sandy beaches and other amenities
- Just 5 minutes from the International Airport and the re-known Golf Course

Delivery Date 18 to 20 months from signing.

# Floor plans

TYPE: D / 2 BEDROOMS





# Additional information

## Facilities

Parking, Uncovered

## Features

Easy access to highway

En suite shower

Guest WC

Quiet area

## Distances

Amenities

 300 m

Airport

 5 km

Sea

 1 km

Public transport

 300 m

Schools

 2 km