

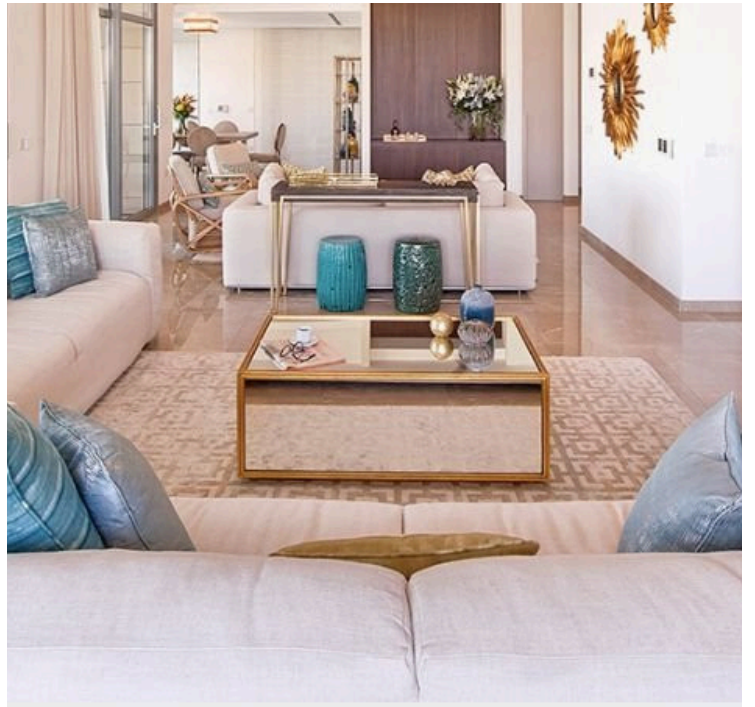
#6020

# 2 Bedroom Apartment Limassol Marina

📍 Limassol Marina, Town Centre, Limassol

€3,500 /month





# Overview

## Specifications

Bedrooms



2

Covered

88 m<sup>2</sup>

Type	<b>Apartment</b>
Plot	<b>108 m<sup>2</sup></b>
Covered veranda	<b>20 m<sup>2</sup></b>

Status	<b>Used</b>
Year of construction	<b>2017</b>

## Description

Limassol Marina combines elegant residences and a full service marina with an enticing mix of restaurants and shops.

Located in the heart of a vibrant city, the marina development offers luxury apartments and exclusive villas with their own private berths or direct access to the beach. Its highly desired Cyprus property, an outstanding collection of stylish homes, provide a unique retreat complete with a spa and fitness club, leisure and cultural facilities. Limassol Marina can accommodate 650 yachts from 8m to 110m with a team of experienced professionals to ensure the smooth running of all operations.

Prices start from:

EUR 2,000 p/m for 1 Bedroom Apartments

EUR 3,400 p/m for 2 Bedrooms

EUR 5,000 p/m for 3 Bedrooms

Please note the photos are for demonstration purposes and are indicative of the standard offered in Limassol Marina.

# Additional information

## Facilities

Aircondition, Split system

Elevator

Gated complex

Gym

Parking, Covered

Pool, Communal

Self contained annex

Spa

## Features

Sea front

Sea view

Walking distance to beach