

#5878

4 Bedroom Penthouse In The Heart Of Limassol

📍 Town Centre, Limassol

€790,000 +VAT





Overview

Specifications

Bedrooms

 4


Bathrooms

 1

Covered

 135 m²

Type	Apartment
Showers	1
Toilets	2
Covered veranda	35 m ²

Status	Under construction
Year of construction	2021
Energy efficiency rating	 A

Description

A high-standard residential building in Limassol. The project is located in the most central area of Limassol and at the same time in a very quiet neighborhood of the city. Short distance walk to all the services area (supermarkets, restaurants, schools, etc.), the historic and cultural center of Limassol, the beach and the pier. The motorway linking Limassol to the other cities of the island and the villages in Troodos' Mountains is just five minutes away. Alasia residence consists of four two-bedroom apartments, two on the first and second floors, a three-bedroom apartment on the third floor, and a 4-bedroom penthouse. Ground-floor includes parking spaces for all apartments and two parking spaces for the three-bedroom and four-bedroom apartment. All mechanical installations are housed at the intermediate floor for better performance and protection. The communal terrace was built into a recreation area for all the occupants to enjoy with overground garden and swimming pool. Bio-climatic design with passive sunscreen and solar effects sun protection (orientation, thermal insulation, natural ventilation) in combination with energy measures (use of renewable energy sources for the 25% of the needs, use of heat pumps with minimum consumption and maximum efficiency) set the building in energy class A+, an example of sustainable "dwelling" according to the spirit of our era.

Anti-seismic bearing construction and maintenance. Reinforced concrete in accordance with the current Eurocodes. Outwardly exposed concrete and aluminium lining distress the building shell from frequent maintenance.

Masonry

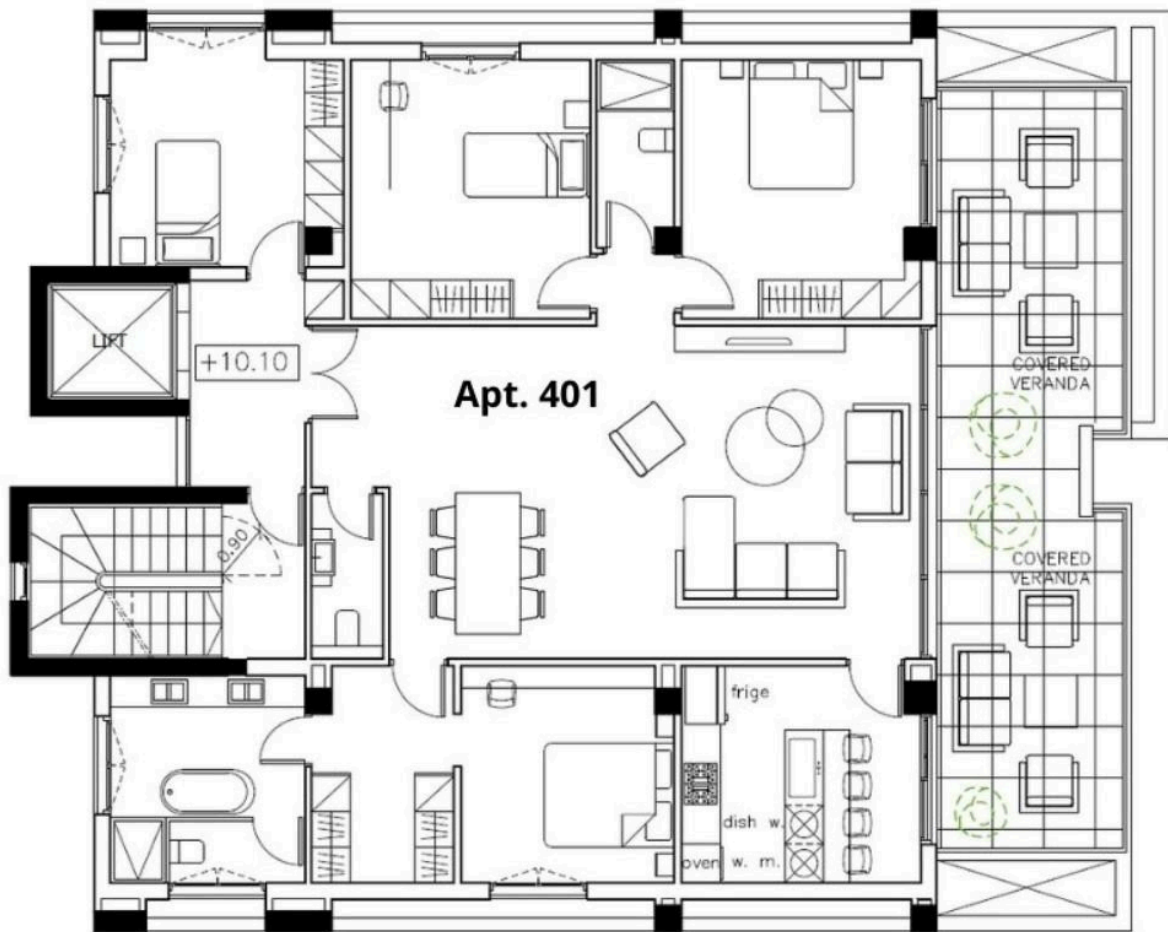
- Externally exposed reinforced concrete with a hydrophobic coating and internal thermal insulation of fire-resistant materials.
- Partial masonry with external thermal insulation and aluminium lining. Inside brick masonry of 10-20 cm coated clay.

Floors

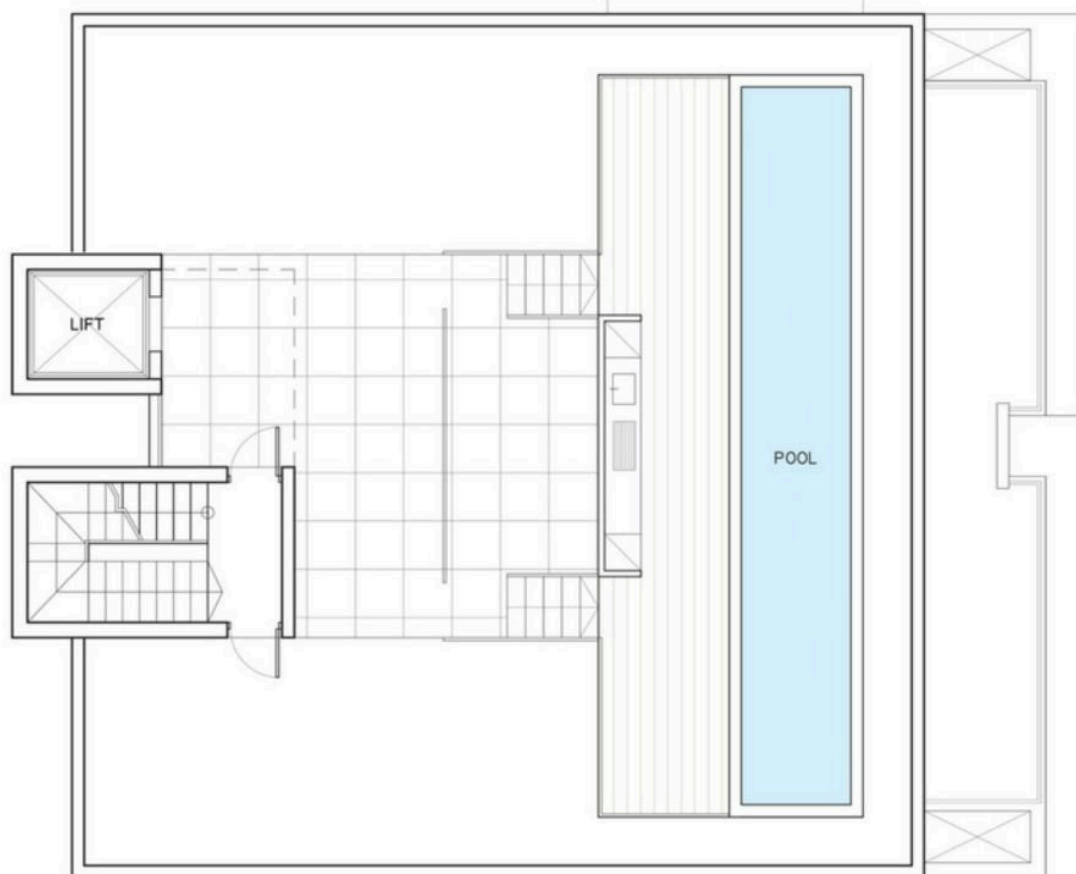
- Public Spaces. Seamless surfaces of pressed cement mortar and pebbled floor.

Floor plans

Penthouse



Root-garden



Additional information





Facilities

Aircondition, Central system	Elevator	Heating, Underfloor
Parking, Covered	Pool, Private	Solar photovoltaic panels
Storage		

Features

Heart of city center	Modern design	Open plan
Roof garden	Veranda, front	

Distances

Amenities  200 m	Sea  600 m	Public transport  200 m
Schools  500 m		