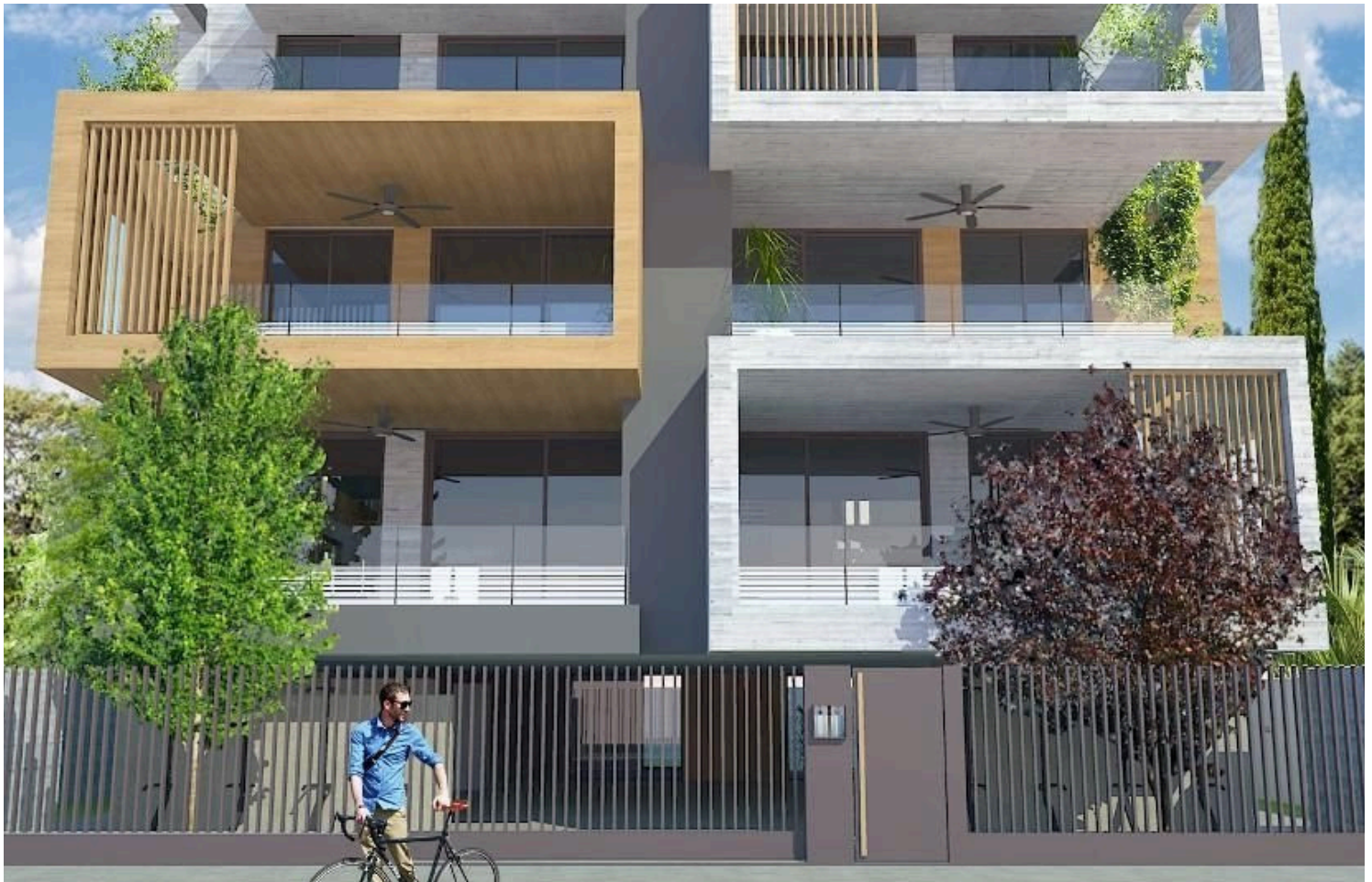


#5875

3 Bedroom Apartment In The Heart Of Limassol

📍 Neapolis, Limassol

€695,000 +VAT





Overview

Specifications

Bedrooms

 3


Bathrooms

 2

Covered

 145 m²

Type	Apartment
Showers	1
Toilets	3
Plot	170 m ²

Covered veranda	35 m ²
Status	Under construction
Year of construction	2021
Energy efficiency rating	 A

Description

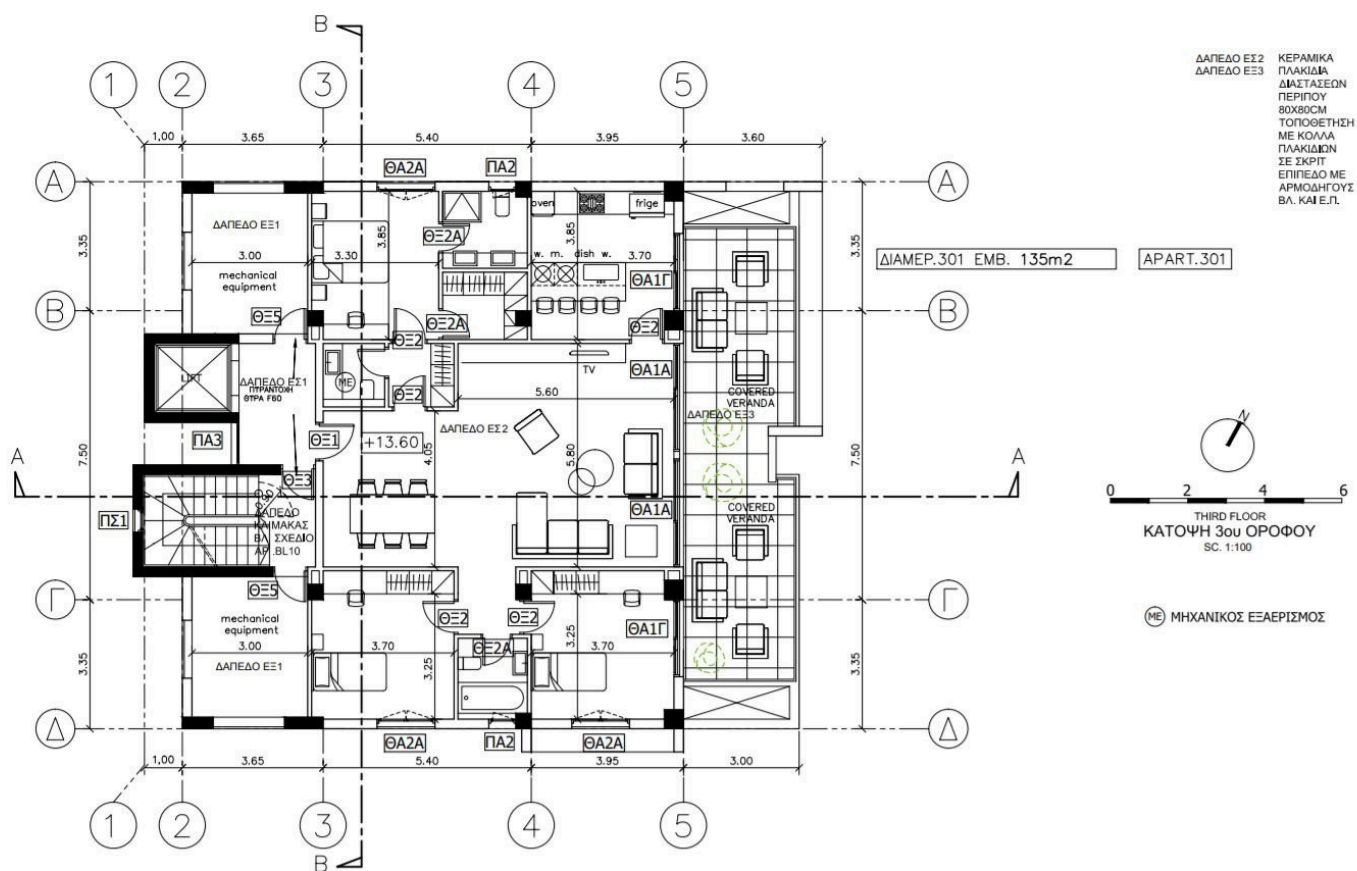
3 Bedroom Apartment in a high-standard residential building in the heart of Limassol, Cyprus. The project is located in the most central area of Limassol and at the same time in a very quiet neighborhood of the city. Short distance walk to all the services area (supermarkets, restaurants, schools, etc.), the historic and cultural center of Limassol, the beach and the pier. The motorway linking Limassol to the other cities of the island and the villages in Troodos' Mountains is just five minutes away. Alasia residence consists of four two-bedroom apartments, two on the first and second floor, a three-bedroom apartment on the third floor. Ground-floor includes parking spaces for all apartments.


All mechanical installations are housed at the intermediate floor for better performance and protection. Bio-climatic design with passive sunscreen and solar effects sun protection (orientation, thermal insulation, natural ventilation) in combination with energy measures (use of renewable energy sources for the 25% of the needs, use of heat pumps with minimum consumption and maximum efficiency) set the building in energy class A +, an example of sustainable "dwelling" according to the spirit of our era.

FEATURES

- > A+ Energy Classification, the building will be fitted with Photovoltaic panels
- > Thermal insulations for energy A+ classification
- > Outstanding location
- > Underfloor heating
- > Central VRV air conditioning
- > European High standard sanitary ware
- > European standard kitchen and cabinets

Floor plans



ΕΡΓΟ:	PROJECT	ΚΛΙΜΑΚΑ:	SCALE	ΑΡΙΘ. ΑΝΑΘΕΩΡΗΣΕΩΝ/REVIEWS	ΣΧΕΔΙΑΣΤΗΣ:	DESIGNER	 <p>121 Agios Panteon Street, Limassol, P.O.Box 54860, 3016 Limassol, Cyprus. Tel: 00357 22345712 Fax: 00357 22341048 info@praxis-designs.com</p> <p>www.praXis-designs.com</p>
ΠΟΛΥΚΑΤΟΙΚΙΑ ΣΤΗΝ ΟΔΟ ΑΛΑΣΙΑΣ APARTMENT HOUSE AT ALASIAS STR.		1:100			F.D		
ΤΙΤΛΟΣ ΣΧΕΔΙΟΥ:	DRAWING TITLE	ΗΜΕΡΟΜΗΝΙΑ:	DATE		ΑΡ. ΣΧΕΔΙΟΥ:	DRAWING	
THIRD FLOOR ΚΑΤΟΨΗ 3ου ΟΡΟΦΟΥ		NOVEM. 2017			05		

Additional information





Facilities

Aircondition, Central system	Heating, Underfloor	Parking, Covered
Solar photovoltaic panels	Storage	

Features

Heart of city center	Modern design	Open plan
Veranda, front		

Distances

Amenities  200 m	Sea  600 m	Public transport  200 m
Schools  500 m		