

#5853

# 2 Bedroom Apartment 200m From Beach

📍 Dasoudi, Potamos Germasogeia, Limassol

€880,000







# Overview

## Specifications

Bedrooms

 **2**

Bathrooms

 **1**

Covered

 **87 m<sup>2</sup>**

Type **Apartment**

Toilets **2**

Covered veranda **31 m<sup>2</sup>**

Uncovered veranda **4 m<sup>2</sup>**

Status **Key ready**

Year of construction **2019**

## Description

Highest quality of finishes. Floors are laid not just in marble, but with mosaics; the ceiling – 3,15 meters height; separate underfloor heating in each area controlled by Siemens-produced management system; bidet in the bathrooms; air conditioning units in the bathrooms; Mitsubishi VRV air conditioning; external door and window frames made of solid wood; sanitary ware Duravit / Grohe; spacious swimming pool finished with mosaics; double-brick outside walls; kitchen units of Italian brand Berloni; wooden floor (not laminate and not MDF).

Club style project (with concierge, sauna, fitness center, etc.); secured fenced-in territory, 24/7 video monitoring.

Quiet prestigious area in walking distance to the sea and infrastructure, also within walking distance to the main and the only park by the sea.

Beautiful architecture, the façade is clad in marble.

Main specifications of the complex on the whole:

Secured fenced-in territory, 24/7 video monitoring

A concierge room, fully equipped

Elaborately finished front entrance. Expensive marble, beautiful chandeliers and furniture. Ceiling height is 5.20 m.

15x7 m swimming pool finished with mosaics

Fitness center

Sauna (for men/women)

Apartment specifications:

Net ceiling height is 3.15 m.

High (2.4 m) interior doors

Living room and bedroom floors are expensive marbles, granites, and parquet

Double-pane insulated windows of hard species of wood adjusted to the Cyprus climate and matching the classical interiors and exteriors of the buildings

Under floor heating systems using cutting-edge technology

Mitsubishi hot/cold conditioning systems



# Floor plans



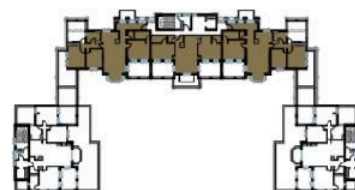
## C401 & C403

Bedrooms	3
Internal area, sq.m.	135
Covered verandas, sq.m.	39
Total covered, sq.m.	174
Uncovered verandas, sq.m.	0
Roof terrace, sq.m.	-
Common area, sq.m.	0
Total area, sq.m.	174

## C402

Bedrooms	2
Internal area, sq.m.	87
Covered verandas, sq.m.	31
Total covered, sq.m.	118
Uncovered verandas, sq.m.	4
Roof terrace, sq.m.	-
Common area, sq.m.	0
Total area, sq.m.	122

4th Floor



# Additional information

## Facilities

Aircondition, Split system	Clubhouse	Gated complex
Gym	Pool, Communal	Sauna

## Features

Balcony	CCTV	Combined kitchen and dining area
Entrance gate, automated	Guest WC	High ceilings
Kitchen appliances	Luxury specifications	Marble flooring
Mosaic tiles	Near amenities	Near bus route
Wooden flooring		

## Distances

Amenities	Sea	Public transport
 200 m	 200 m	 100 m