

#5632

3 Bedroom Luxury Penthouse 100m From Beach

📍 Dasoudi, Potamos Germasogeia, Limassol

€1,075,000 +VAT





Overview

Specifications

| | | | | | |
|---|--|---|--|--|--|
| Bedrooms | | Bathrooms | | Covered | |
|  3 | |  2 | |  147 m ² | |
| Type | | Apartment | | | |
| Toilets | | 2 | | | |
| Plot | | 277 m ² | | | |
| Uncovered veranda | | 105 m ² | | | |
| Status | | Key ready | | | |
| Year of construction | | 2019 | | | |

Description

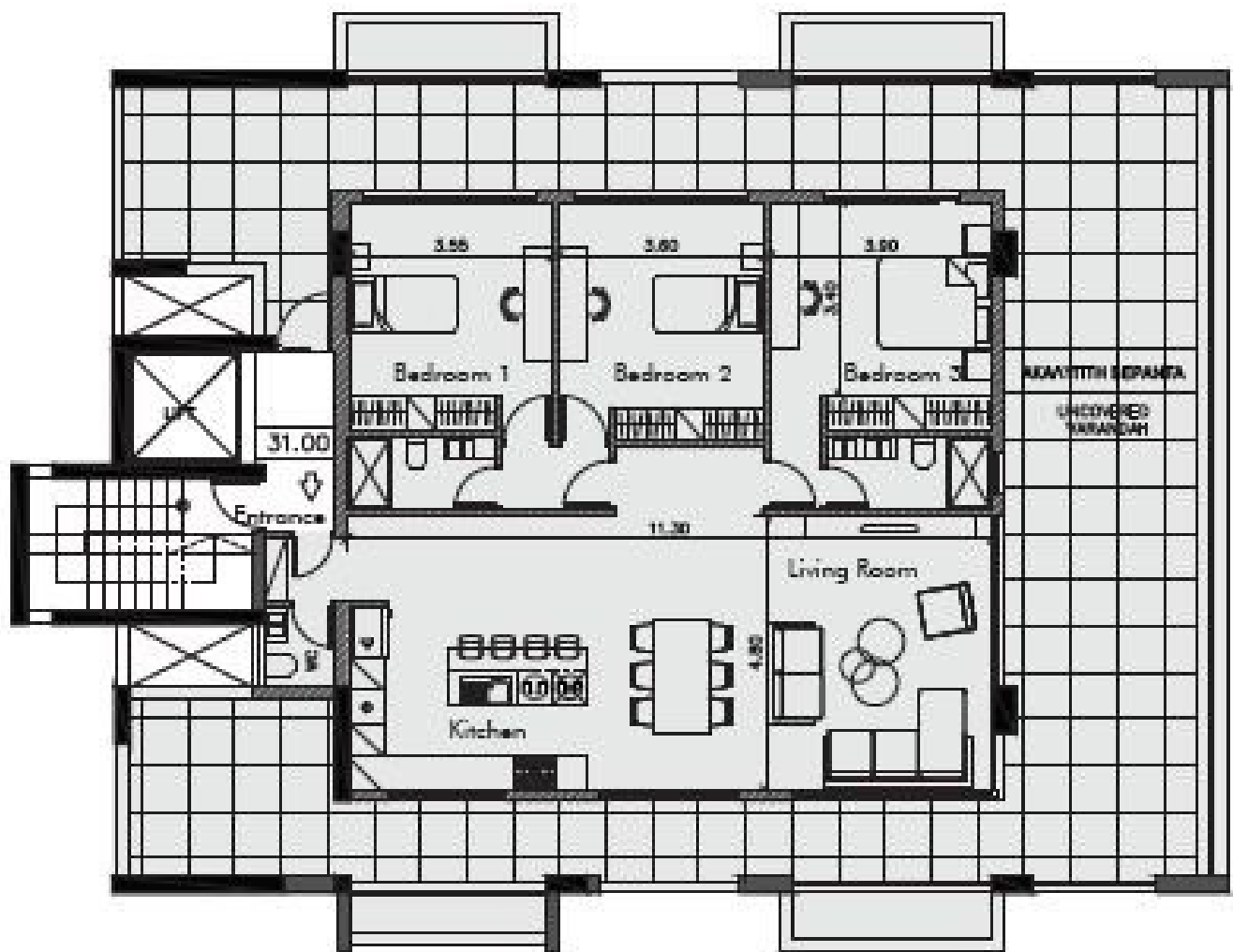
The Residence is located in the heart of Limassol's Germasogeia area, less than 100 meters from the ever-popular public Dasoudi park beach, and in one of the city's most bustling, cosmopolitan neighborhoods.

This elegant, contemporary residential complex comprises a total of six well-designed two-bedroom apartments, and one spacious three-bedroom penthouse on the top floor. Residents will enjoy being a stone's throw from the beautiful beachfront promenade and the sandy Blue Flag beach of Dasoudi, as well as having all nearby amenities within easy reach.

Public and private schools, supermarkets, vibrant nightlife, upscale shops and high-end cafés are all a short walk or drive away.

Large, floor to ceiling windows allow an abundance of natural light to stream in, and extend out onto full balconies with glass railings, serving up beautiful views of the cityscape below and the Mediterranean Sea beyond. The building boasts a large, well-lit entrance lobby, while each of the apartments include private covered parking spaces and storage rooms. As night falls, the exterior of the building is warmly lit up with strategically placed spotlights. This, combined with the gated access, creates an environment that does not compromise on privacy, safety, or comfort for its residents.

Floor plans



Additional information

Facilities

| | | |
|--------------------|---------------|------------------|
| Elevator | Gated complex | Parking, Covered |
| Solar water heater | Storage | |

Features

| | | |
|---------------------------|------------------|-------------------|
| Double glazing | Elevated | En suite bathroom |
| Entrance gate | Fitted wardrobes | Modern design |
| Near amenities | Open plan | Veranda, large |
| Walking distance to beach | | |

Distances

| | |
|--|--|
| Amenities | Sea |
|  100 m |  100 m |