

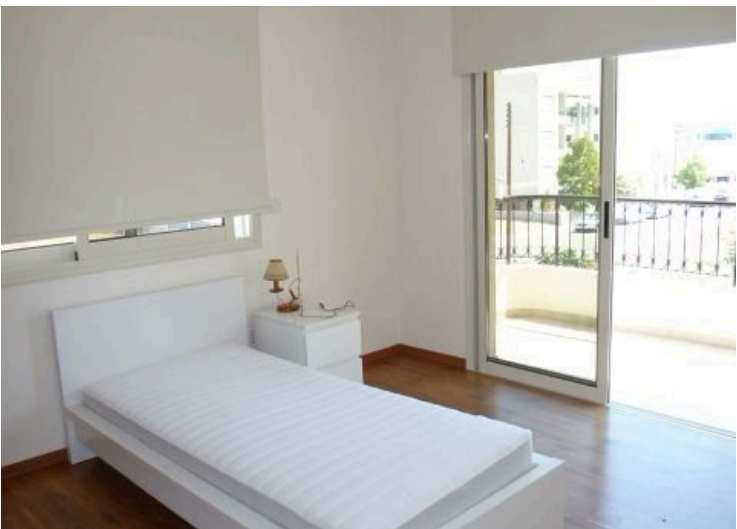
#5290

2 Bedroom Apartment City Centre

📍 Mesa Geitonia, Limassol




€370,000





Overview

Specifications

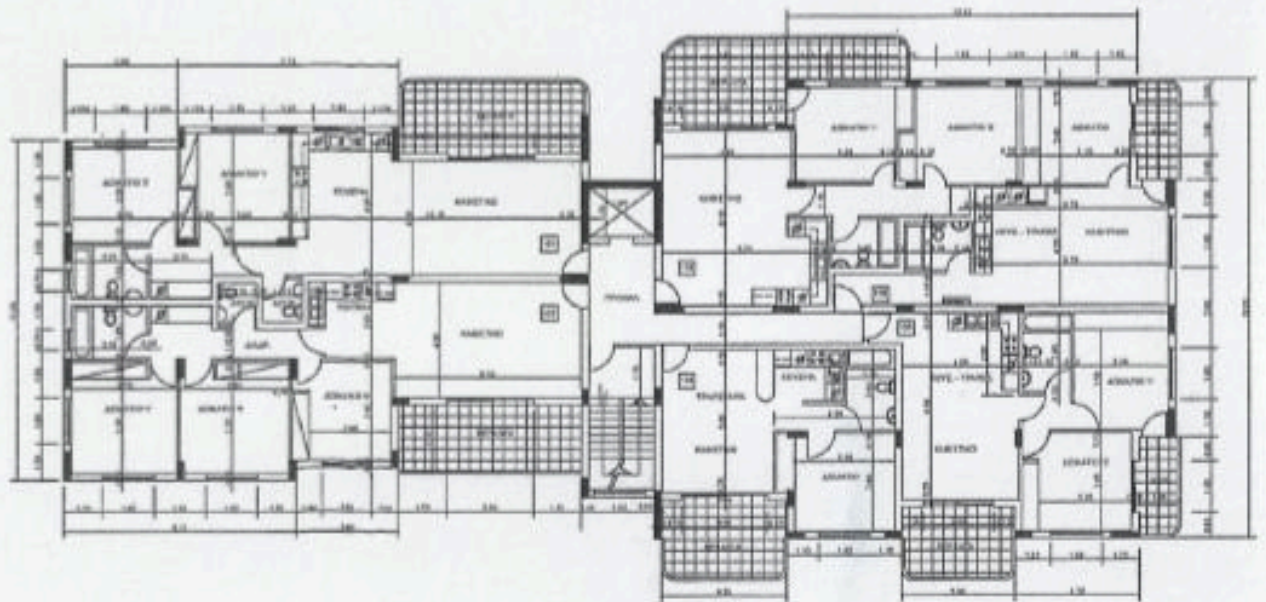
Bedrooms		Bathrooms		Covered	
 3		 2		 132 m ²	
Type		Apartment			
Toilets		3			
Plot		172 m ²			
Covered veranda		24 m ²			
Status		Key ready			
Year of construction		2007			
Furnished		Fully furnished			

Description

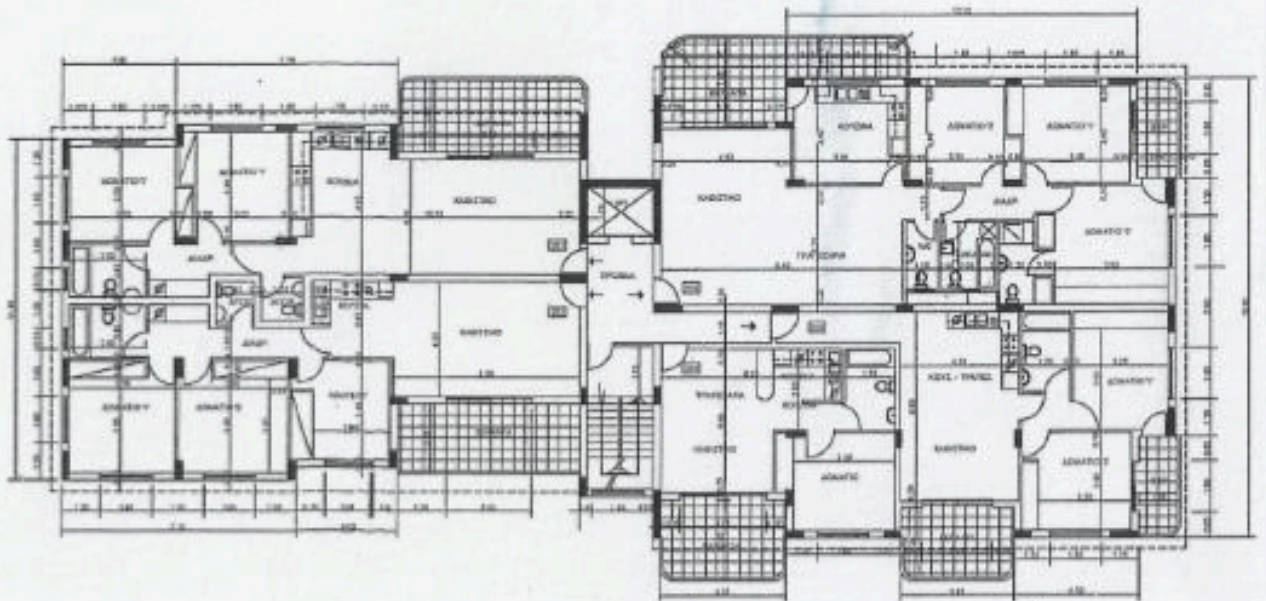
The building comprises of 2 and 3 bedroom apartments in the heart of the city.

Every flat has at least one parking space, storage a covered veranda.

Floor plans



ΚΑΤΟΧΗ Α' ΟΡΟΦΟΥ
ΚΛΙΜΑΚΑ 1:100



ΚΑΤΟΧΗ Β' ΟΡΟΦΟΥ
ΚΛΙΜΑΚΑ 1:100

Additional information

Facilities

Aircondition, Split system	Elevator	Parking, Covered
Storage		

Features

Fitted wardrobes	Guest WC	Kitchen appliances
Near amenities	Open plan	Veranda

Distances

Amenities

 100 m