

#5142

# Luxury Building For Sale Panthea

📍 Panthea, Limassol

€1,550,000 +VAT





# Overview

## Specifications

Bathrooms

 6

Covered

 446.2 m<sup>2</sup>

Toilets

1

Status

Off plan

Year of construction

2020

## Description

AREA: Agia Fyla - Panthea it's one of the most desired areas for residential purpose.

It's located over the highway road in a distance of 3 km from city center, in a higher altitude offering beautiful view of the city and the sea & mountains view .

AREAS FACILITIES: as one of the biggest municipalities of the town, its offering a big variety of facilities and services. Some of them are: private schools, public schools, coffee shops, bakeries, supermarkets, at panthea sport academies, restaurants, pet shop and many more.

THE BUILDING: The building is in modern design and it's located in a quiet location with the view of the sea and the city. The building it's consisted of 3 units as described in the below table.

The apartments have open plan kitchen with the living room, 1 guest toilet, the master bedrooms includes bathrooms, covered spaces parking, also the top floor has a juccuzi.

Floor 1 :

3 bedrooms, 2 bathrooms, 1 toilet, covered area 124 sqm, covered veranda 18 sqm, 2 parking spaces

Floor 2 :

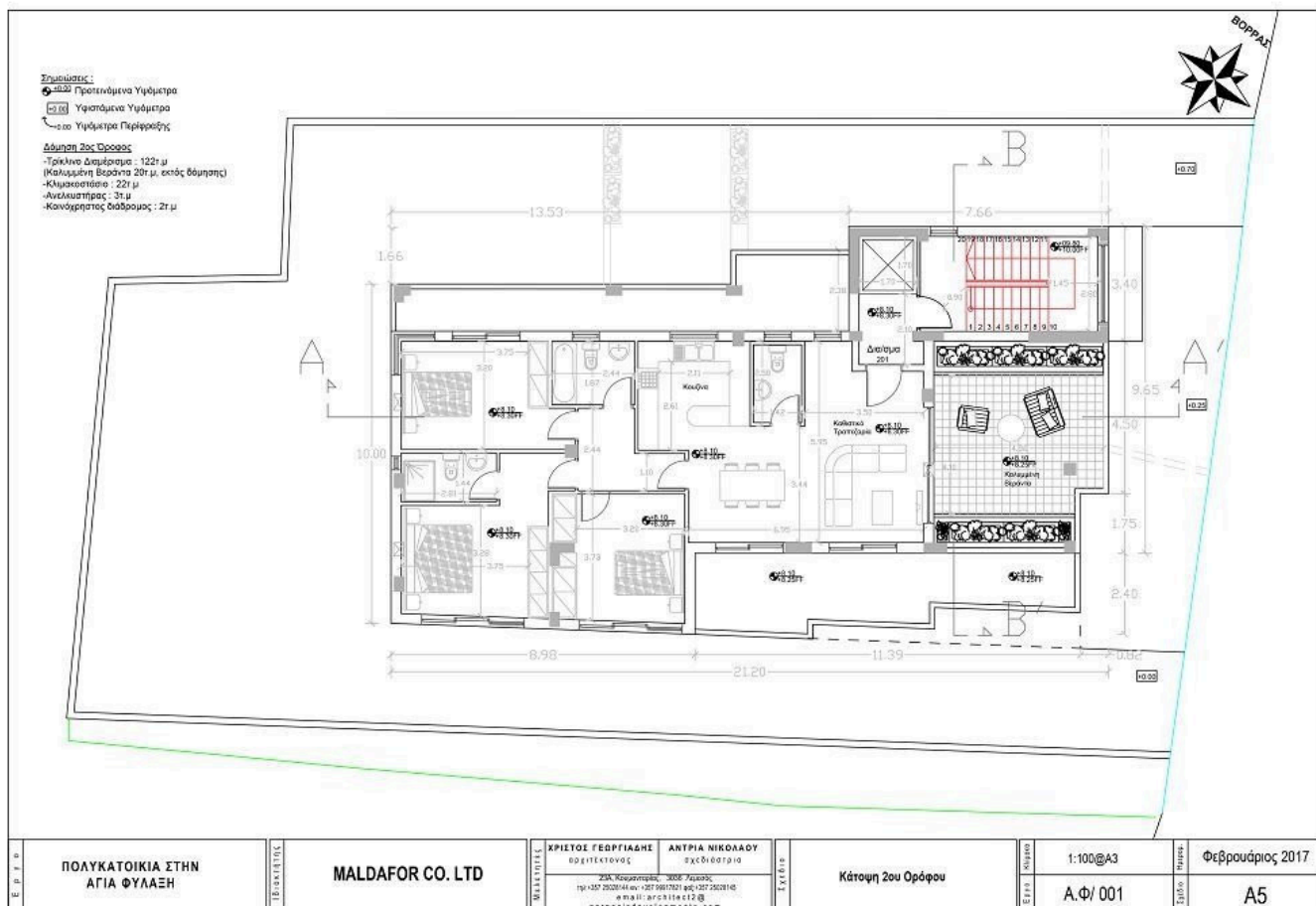
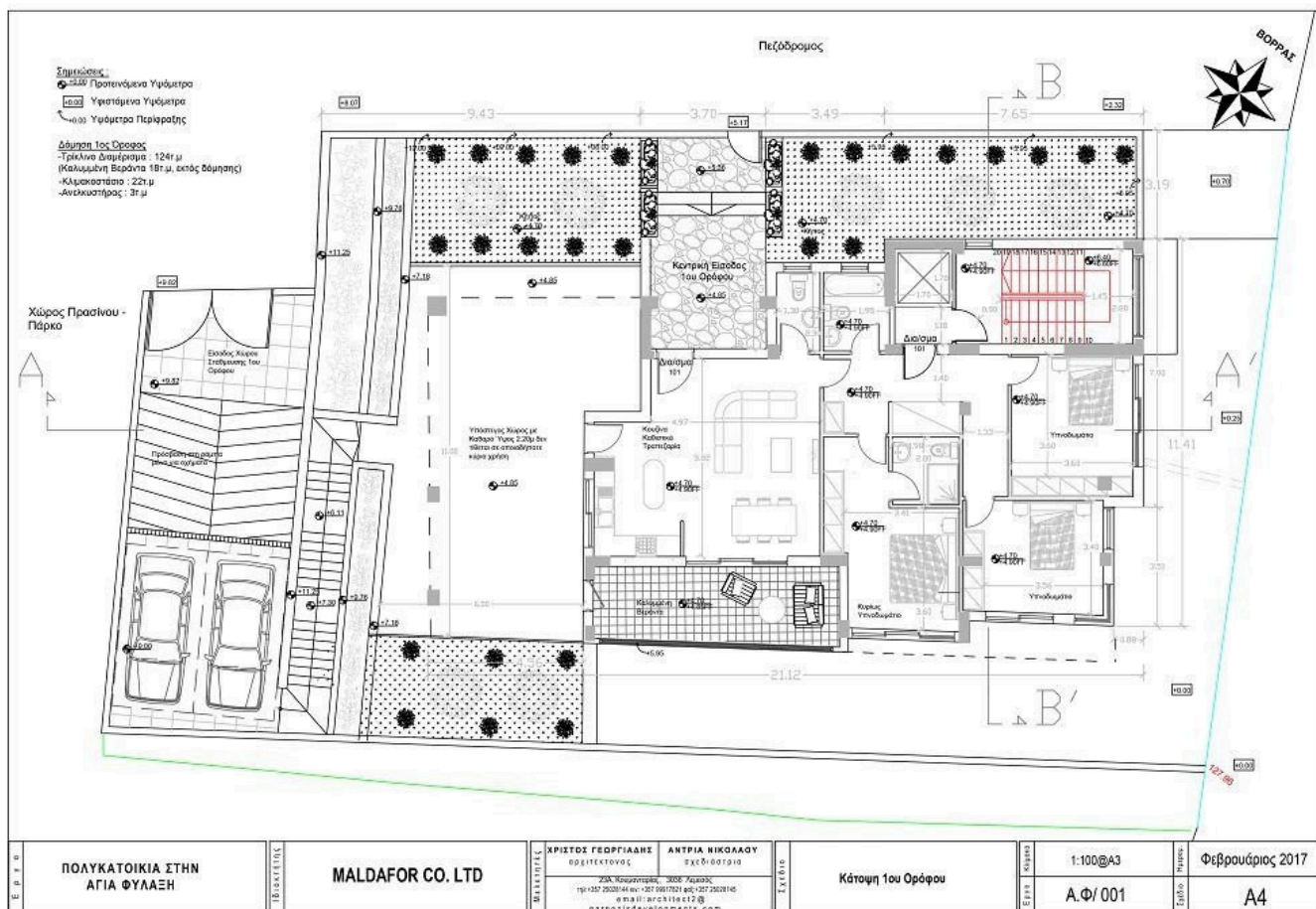
3 bedrooms, 2 bathrooms, 1 toilet, covered area 122 sqm, covered veranda 20 sqm, 1 parking space

Floor 3 :

4 Bedrooms, 2 bathrooms, 1 toilet, covered area 147 sqm, covered veranda 15,20 sqm, 2 parking spaces

TOTAL COVERED AREA: 446.2 SQM

# Floor plans



# Additional information

## Facilities

Parking, Covered