

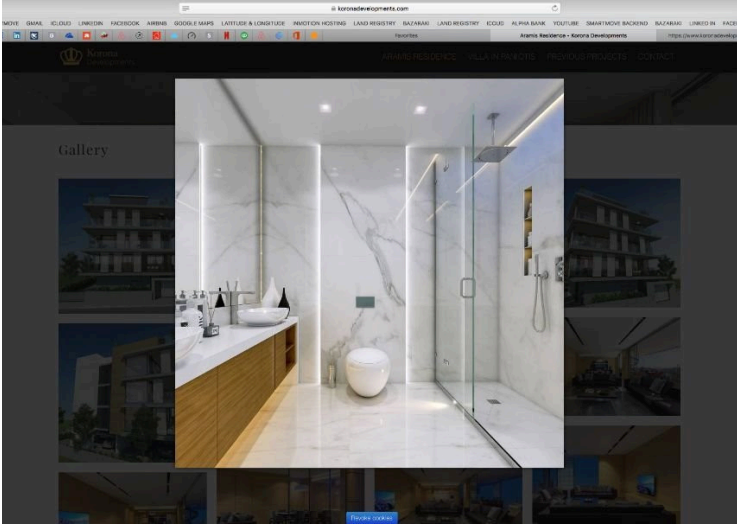
#4859

195m2 Luxury Entire Floor Apartment

📍 Dasoudi, Potamos Germasogeia, Limassol

€830,000 +VAT ~~€950,000~~





Overview

Specifications

Bedrooms

 3

Bathrooms

 2

Covered

 150 m²

Type

Apartment

Toilets

3

Plot

195 m²

Status

Under construction

Year of construction

2019

Description

Comprises only three apartments, one on each floor, offering a unique style in family life.

With its contemporary design and high quality materials chosen both externally and internally, will provide to the habitants practicality, comfort and privacy.

With only three apartments this is an excellent residential solution for the demanding buyer.

Its location is carefully picked in order to provide easy access to the cosmopolitan life and the centre of the city, but tranquillity as well.

Each apartment with a total internal space of 150m2 and an additional covered balcony of 45 sm will provide to the residents a comfortable and pleasant way of living.

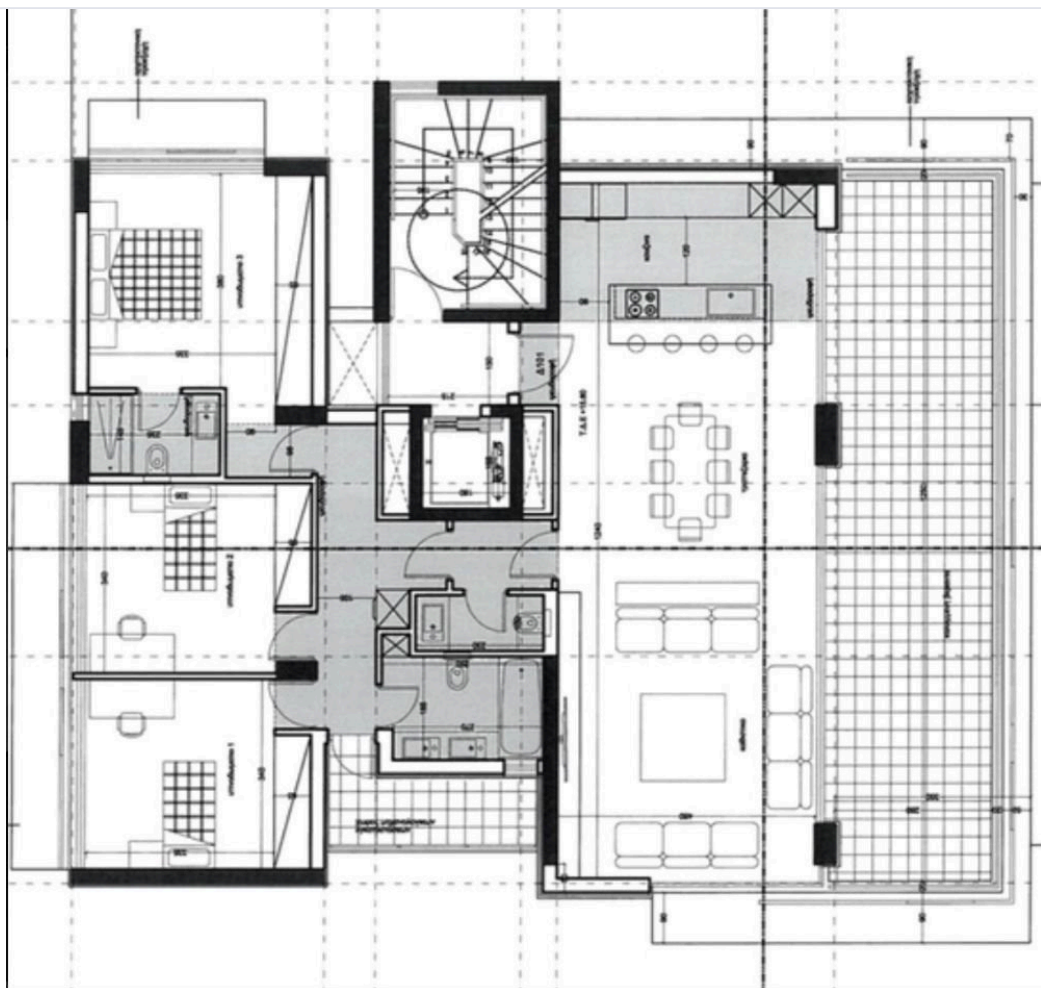
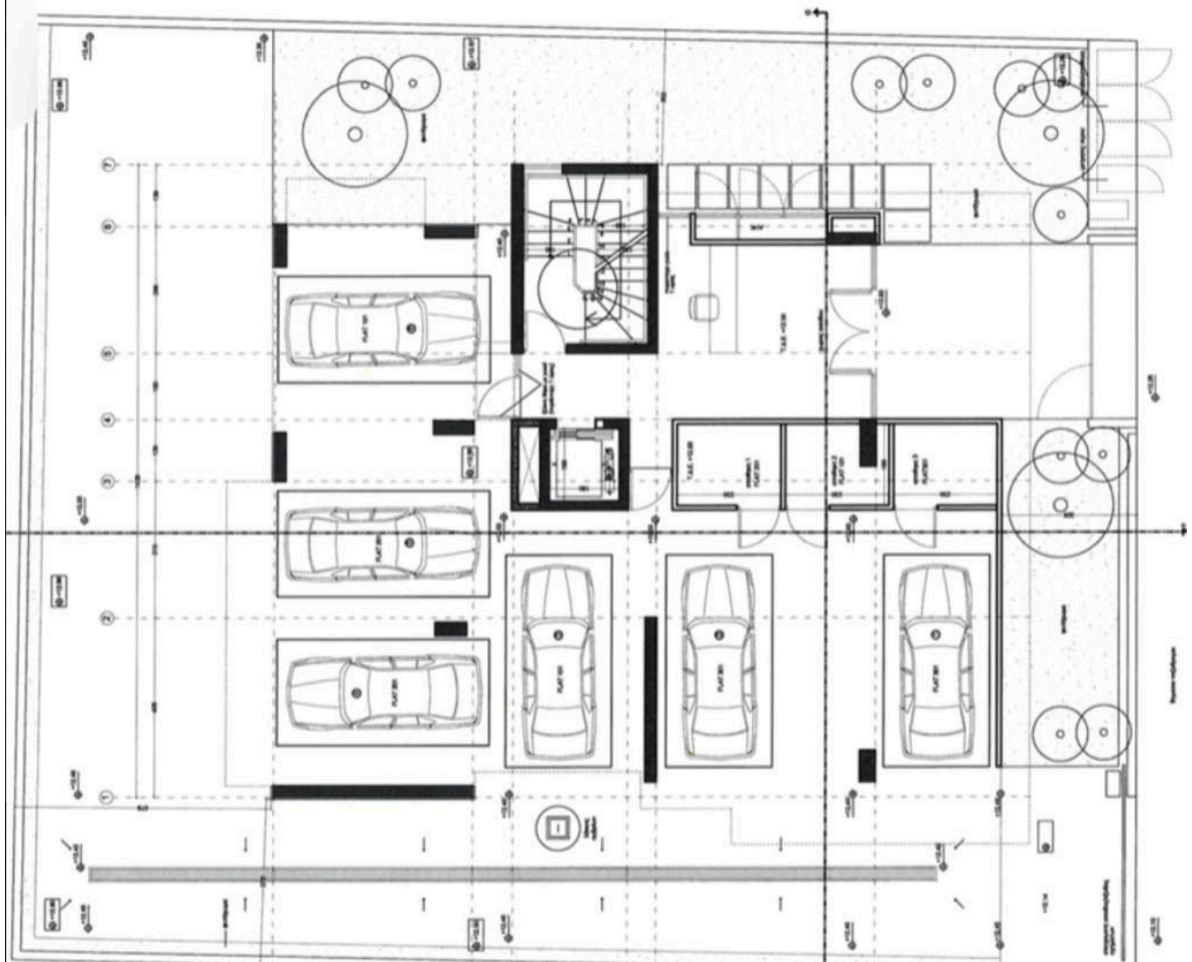
The apartments offer three bedrooms of adequate size, with an un suite in the master bedroom, a master bathroom and a guest toilet. A modern open plan kitchen, and a large dining / living area. The ample space of the balcony, comfortably allows for dining and sitting arrangements.

Two parking spaces and a large storage room will be offered for each apartment.

The lobby of the building on the ground floor has been specially designed to reflect the modern and stylish character of the building. Floor lobbies will not be accessible except from the floor's residents due to regulated elevator operation.

A small but pleasant garden will facilitate children's play adding to the project's character.

Floor plans



Additional information





Facilities

| | | |
|------------------------------|------------------|---------------------------|
| Aircondition, Central system | Parking, Covered | Solar photovoltaic panels |
| Storage | | |

Features

| | | |
|----------------|-------------------|--------------------------|
| Double glazing | En suite bathroom | Guest WC |
| Near amenities | Near bus route | Pressurized water system |
| Veranda, large | | |

Distances

| | | |
|--|--|---|
| Amenities  500 m | Sea  500 m | Public transport  500 m |
| Schools  500 m | | |