

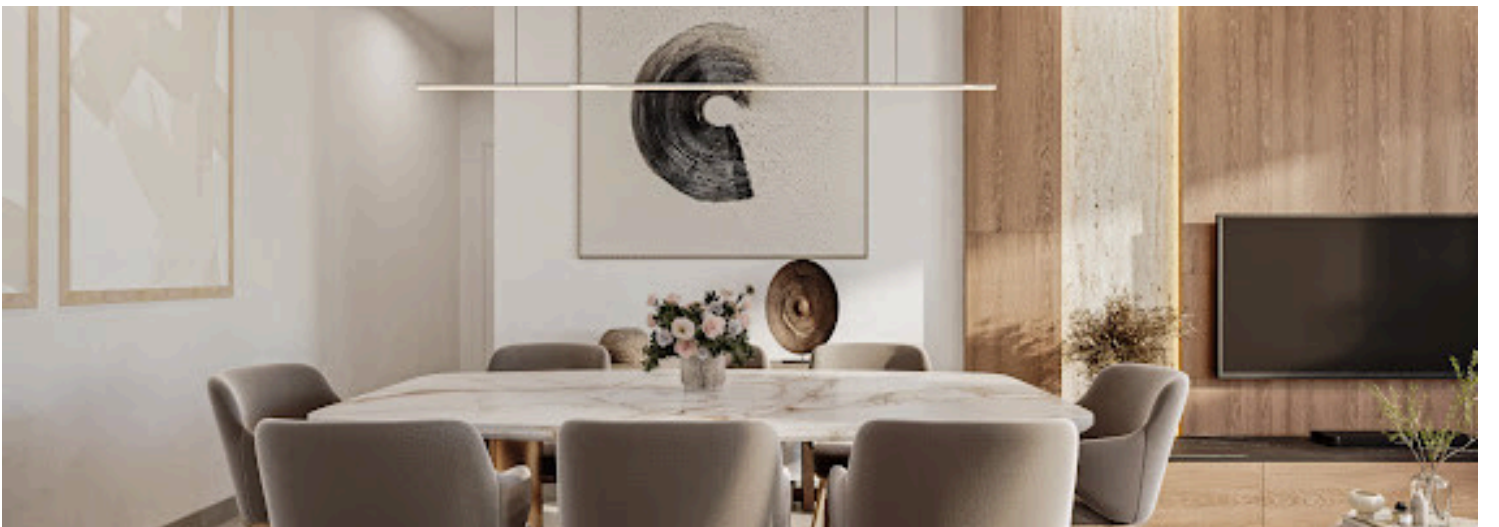
#12296

# 2 Bedroom Apartment With Roof Garden For Sale Germasogeia Limassol

📍 Potamos Germasogeia, LIMASSOL

€1,078,000 +VAT





# Overview

## Specifications

Bedrooms

 3


Bathrooms

 2

Covered

 100 m<sup>2</sup>

|                 |                          |
|-----------------|--------------------------|
| Type            | <b>Apartment</b>         |
| Showers         | <b>2</b>                 |
| Toilets         | <b>2</b>                 |
| Plot            | <b>113 m<sup>2</sup></b> |
| Covered veranda | <b>54 m<sup>2</sup></b>  |

|                          |  |
|--------------------------|--|
| Uncovered veranda        | <b>172.5 m<sup>2</sup></b>   |
| Status                   | <b>Under construction</b>  |
| Year of construction     | <b>2026</b>  |
| Energy efficiency rating |  <b>A</b> |

## Description

Discover modern living in one of Limassol's most desirable residential areas. Located in the prestigious Potamos Germasogeia neighborhood, this elegant apartment combines contemporary design, comfort, and convenience, just a short walk from the beach and everyday amenities.

### Key Features:

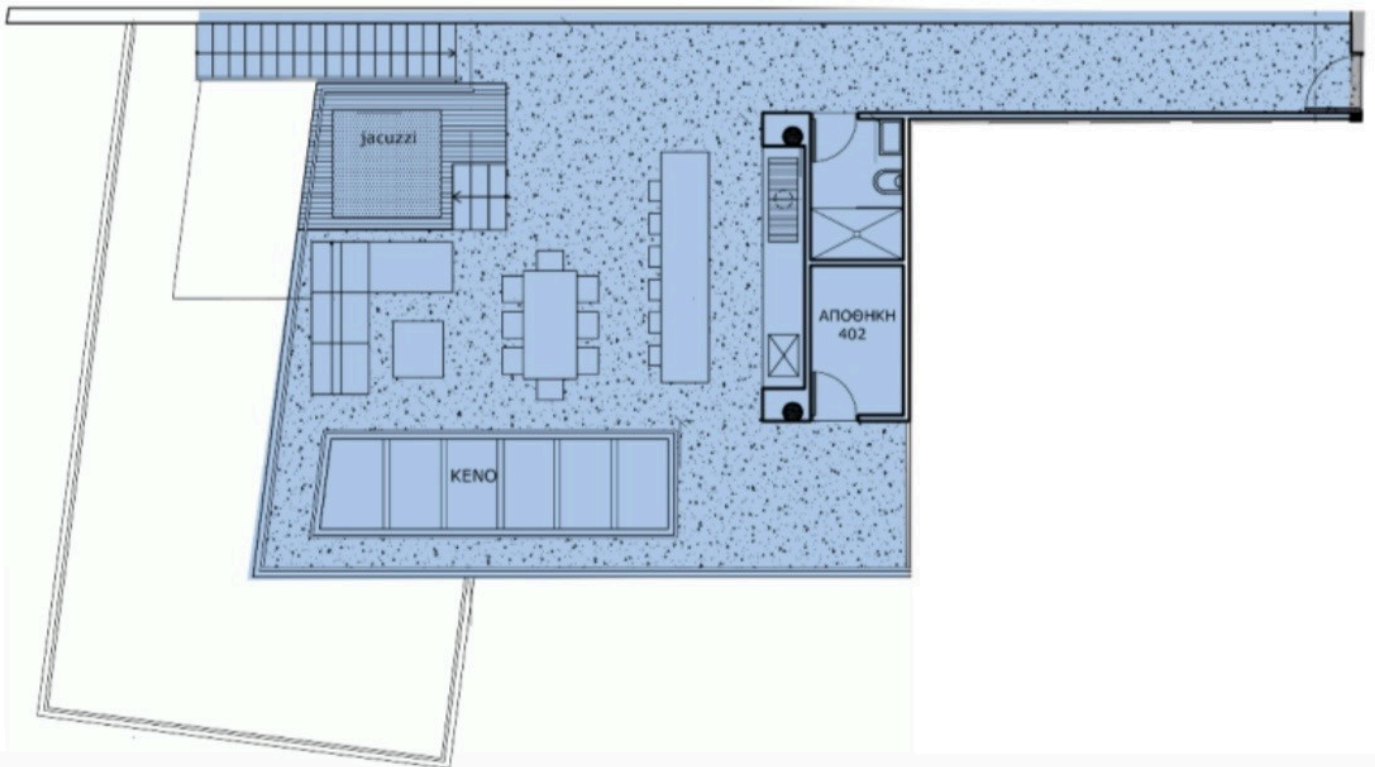
- \* Prime location in Potamos Germasogeia
- \* Walking distance to the beach (approximately 650m)
- \* Modern architecture and high-quality finishes
- \* Spacious open-plan living areas
- \* Private balcony with generous outdoor space
- \* Communal swimming pool with sun terrace
- \* Landscaped gardens
- \* Gated complex with controlled access
- \* Covered parking
- \* Private storage room
- \* Close to shops, restaurants, schools, and public transport
- \* Ideal for both residential living and investment

Reg No. 864 License No. 272/E

# Floor plans



Private roof garden



# Additional information

## Facilities

Aircondition, Split system

Elevator

Gated complex

Parking, Covered

Pool, Communal

Storage

## Features

Combined kitchen and dining area

Double glazing

Easy access to main roads

Modern design

Near amenities

Open plan

Quiet area

Shower

Veranda

## Distances

Airport



60 km

Sea



650 m