

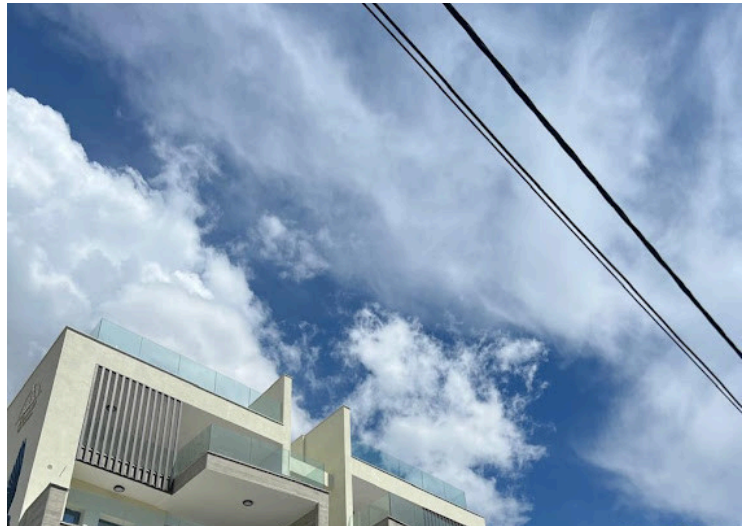
#12287

# 3 Bedroom Penthouse For Sale Germasogeia Limassol

📍 Potamos Germasogeia, LIMASSOL

€1,155,000 +VAT





# Overview

## Specifications

Bedrooms

 3


Bathrooms

 2

Covered

 124 m<sup>2</sup>

Type	<b>Apartment</b>
Showers	<b>2</b>
Toilets	<b>2</b>
Plot	<b>178.75 m<sup>2</sup></b>
Covered veranda	<b>39 m<sup>2</sup></b>

Uncovered veranda	<b>13.5 m<sup>2</sup></b>
Status	<b>Under construction</b>
Year of construction	<b>2026</b>
Energy efficiency rating	 <b>A</b>

## Description

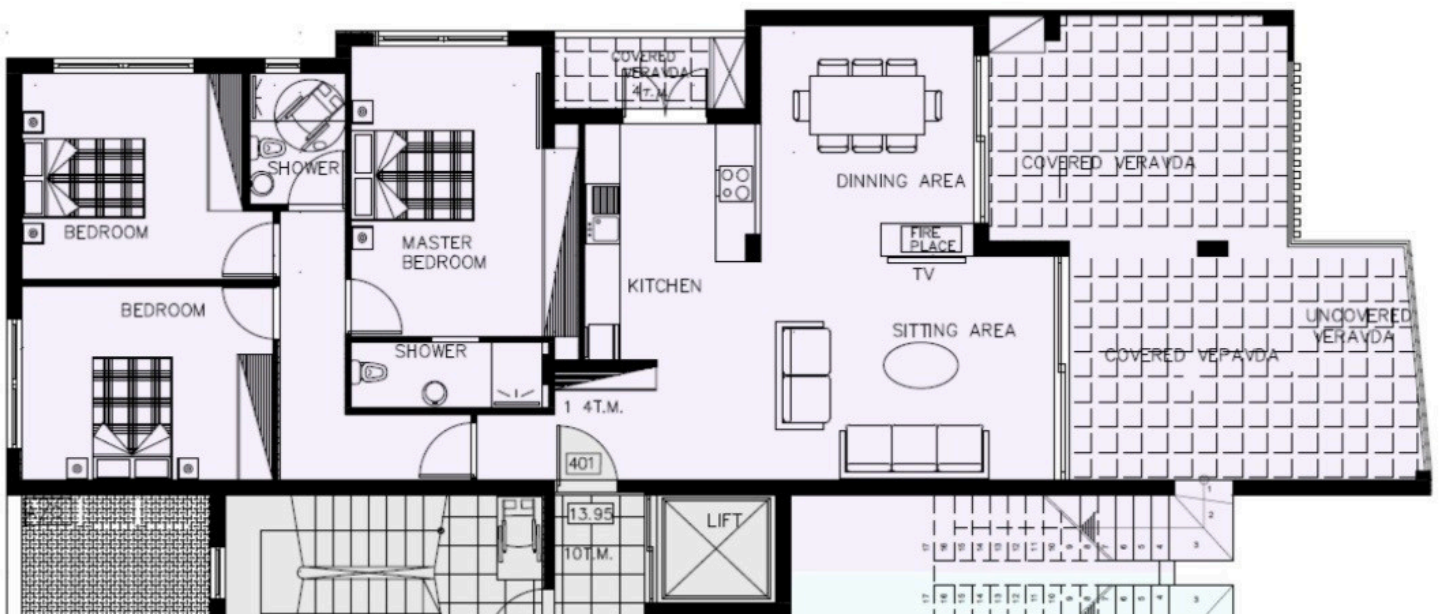
Experience contemporary coastal living in the heart of Potamos Germasogeia. Located in a new exclusive residential development, this modern apartment offers stylish architecture, premium amenities, and an excellent location just a short walk from Dasoudi Beach, restaurants, cafés, supermarkets, and all everyday conveniences.

Key Features :

- \* Prime location in Potamos Germasogeia, Limassol
- \* Walking distance to Dasoudi Beach
- \* Modern architectural design with high-quality finishes
- \* Spacious and bright open-plan living areas
- \* Private balcony with contemporary styling
- \* Communal swimming pool with sun terrace
- \* Gated development with controlled access
- \* CCTV security system
- \* Covered private parking
- \* Spacious storage room
- \* Landscaped communal areas
- \* Boutique development with only 14 apartments
- \* Close to shops, cafés, restaurants, pharmacies, and schools
- \* Ideal for both permanent residence and investment

Reg No. 864 License No. 272/E

# Floor plans



# Additional information

## Facilities

Aircondition, Split system

Elevator

Heating, Underfloor

Parking, Covered

Pool, Communal

Storage

## Features

CCTV

Combined kitchen and dining area

Double glazing

Easy access to main roads

Electric car charger (provision)

High ceilings

Laminate flooring

Modern design

Near amenities

Open plan

Pressurized water system

Quiet area

Shower

Veranda

## Distances

Airport



60 km

Sea



450 m