

#11822

# 2 Bedroom Apartment With Roof Garden For Sale Trachoni Limassol

📍 Trachoni, LIMASSOL

€250,000 +VAT





# Overview

## Specifications

Bedrooms

 2


Bathrooms

 1

Covered

 80.9 m<sup>2</sup>

|                 |                          |
|-----------------|--------------------------|
| Type            | <b>Apartment</b>         |
| Toilets         | <b>2</b>                 |
| Plot            | <b>143 m<sup>2</sup></b> |
| Covered veranda | <b>16 m<sup>2</sup></b>  |

|                          |  |
|--------------------------|--|
| Roof garden              | <b>43 m<sup>2</sup></b>  |
| Status                   | <b>Off plan</b>  |
| Year of construction     | <b>2027</b>  |
| Energy efficiency rating |  <b>A</b> |

## Description

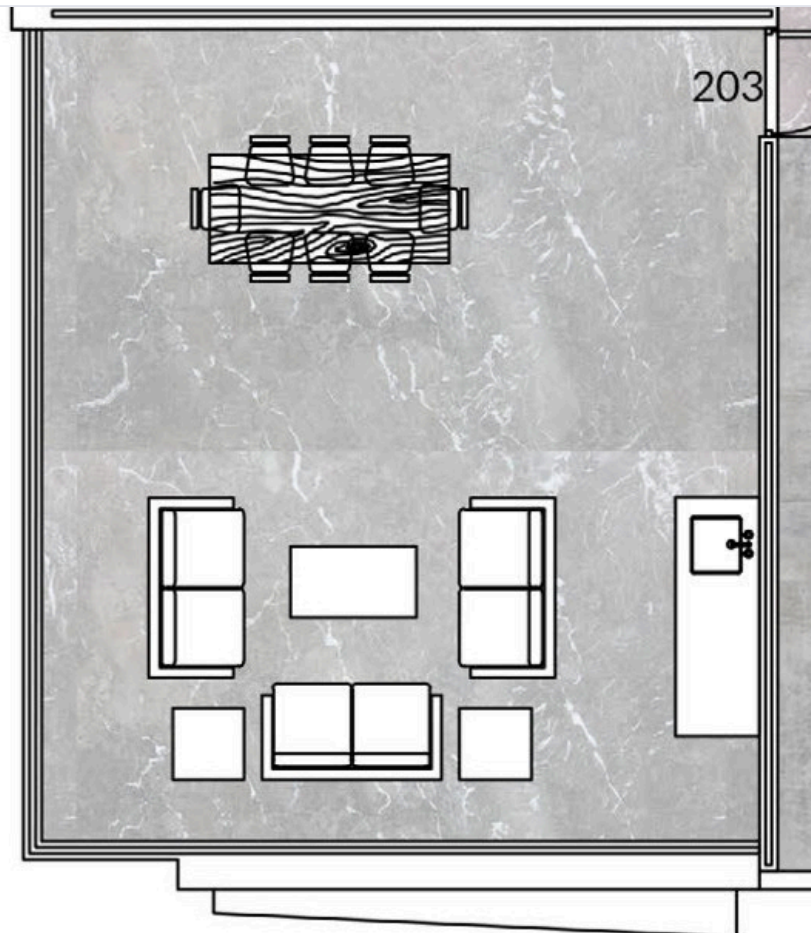
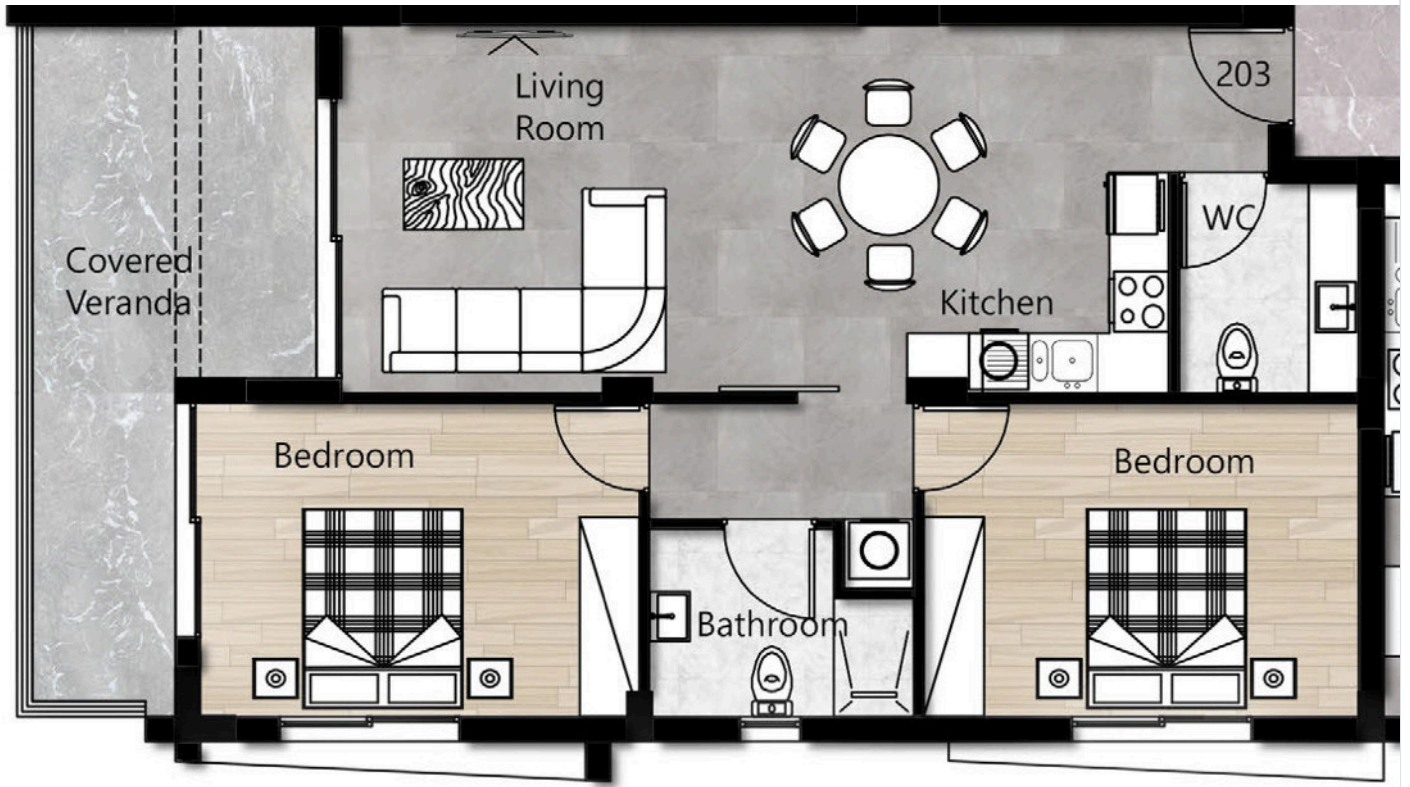
Discover a boutique residential development in the sought-after area of Trachoni, West Limassol. Comprising just six contemporary apartments, this exclusive project combines modern design, quality finishes, and functional living spaces. Ideally located near major landmarks and amenities, it offers an excellent opportunity for both homeowners and investors seeking a property in one of Limassol's fastest-growing areas.

Development Highlights:

- \* Boutique development with only 6 apartments
- \* Two-storey residential building
- \* 3 apartments per floor
- \* Contemporary architectural design
- \* High-quality materials and finishes
- \* Spacious and practical layouts
- \* Bright interiors with abundant natural light
- \* Exclusive second-floor apartments with private roof gardens
- \* Peaceful residential setting
- \* Minutes from City of Dreams Mediterranean
- \* Close to MY MALL Limassol
- \* Easy access to Limassol Greens Golf Resort
- \* Near the rapidly developing Zakaki area
- \* Convenient connection to Limassol city centre
- \* Close to beaches, shopping, dining, and entertainment
- \* Ideal for permanent residence or investment
- \* Located in one of West Limassol's most promising growth areas

Reg No. 864 License No. 272/E

# Floor plans



# Additional information

## Distances

Amenities

 800 m

Airport

 50 km

Sea

 8 km

Public transport

 500 m

Schools

 800 m