

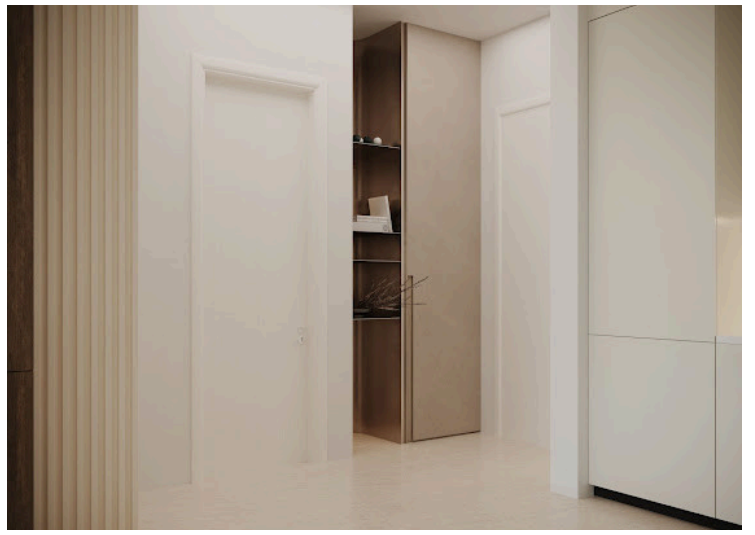
#11567

# 2 Bedroom Apartment For Sale Limassol

 Zakaki, LIMASSOL

**€330,000** +VAT





# Overview

## Specifications

Bedrooms

 2


Bathrooms

 1

Covered

 78.21 m<sup>2</sup>

|                 |                            |
|-----------------|----------------------------|
| Type            | <b>Apartment</b>           |
| Toilets         | <b>2</b>                   |
| Plot            | <b>95.66 m<sup>2</sup></b> |
| Covered veranda | <b>17.45 m<sup>2</sup></b> |

|                          |  |
|--------------------------|--|
| Status                   | <b>Under construction</b>  |
| Year of construction     | <b>2027</b>  |
| Energy efficiency rating |  <b>A</b> |

## Description

This contemporary 2-bedroom apartment is located on the 1st floor of a modern 4-storey residential development, designed to offer comfort, functionality, and stylish living in a quiet yet convenient area.

The apartment features an open-plan layout with a bright living and dining area seamlessly connected to a modern kitchen, creating a spacious and welcoming atmosphere. It includes 2 comfortable bedrooms, 1 main bathroom, and an additional guest WC for added convenience.

With an internal covered area of 78.21 m<sup>2</sup> and a spacious covered veranda of 17.45 m<sup>2</sup>, the property offers excellent indoor and outdoor living space, ideal for relaxing or entertaining.

Residents will benefit from quality features and facilities, including:

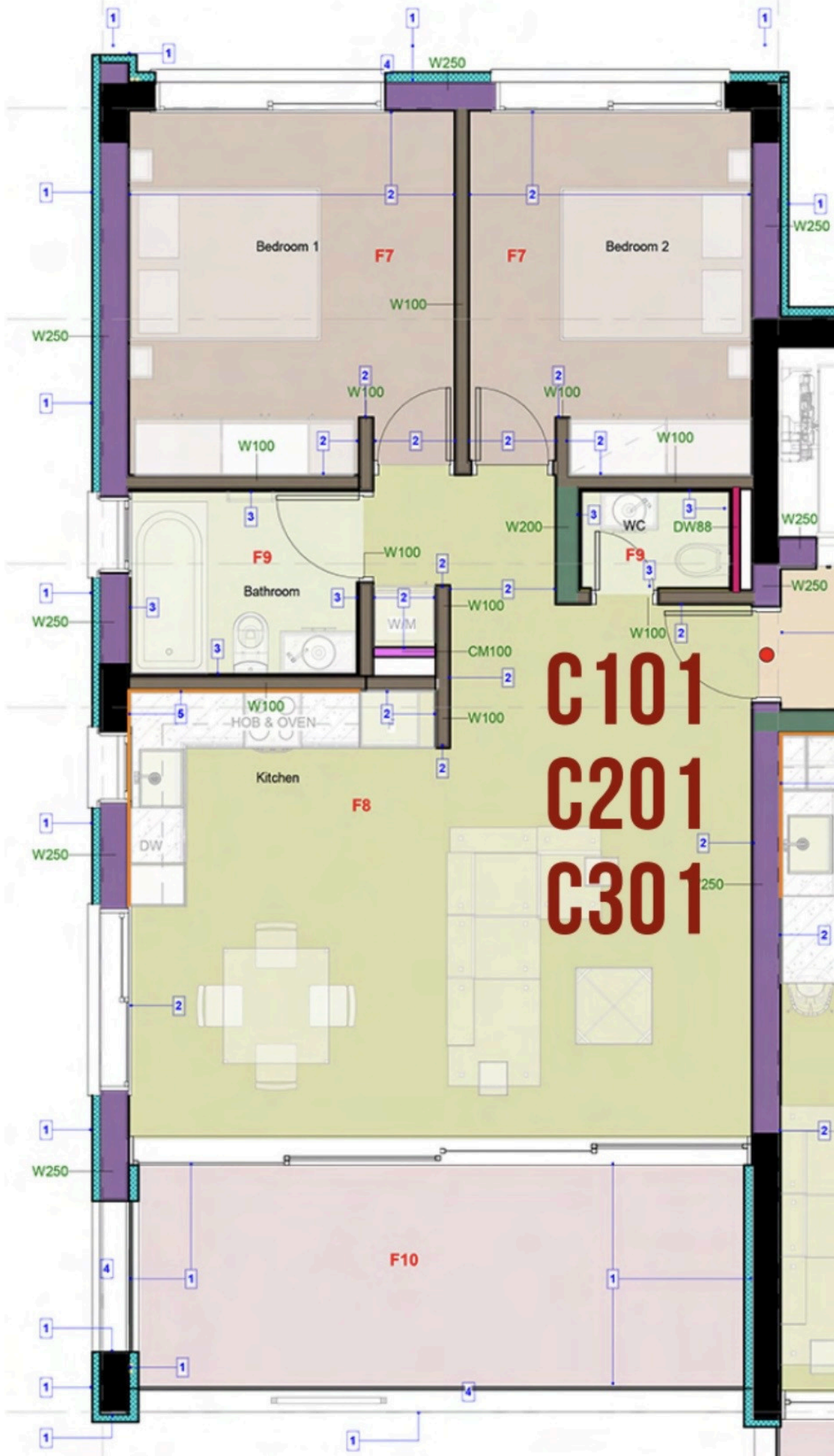
- \* Communal swimming pool
- \* Elevator access
- \* Double-glazed windows
- \* Modern architectural design
- \* Easy access to main roads
- \* Quiet residential location

Ideally situated just 1 km from everyday amenities and only 3 km from the sea, this apartment presents an excellent opportunity for both permanent residence and investment.

A perfect choice for those seeking a modern lifestyle in a well-connected and peaceful setting.

Reg No: 864 License No. 272/E

# Floor plans



# Additional information

## Facilities

Elevator

Pool, Communal

## Features

Combined kitchen and dining area

Double glazing

Easy access to main roads

Guest WC

Modern design

Open plan

Quiet area

Veranda

## Distances

Amenities



1 km

Sea



3 km