

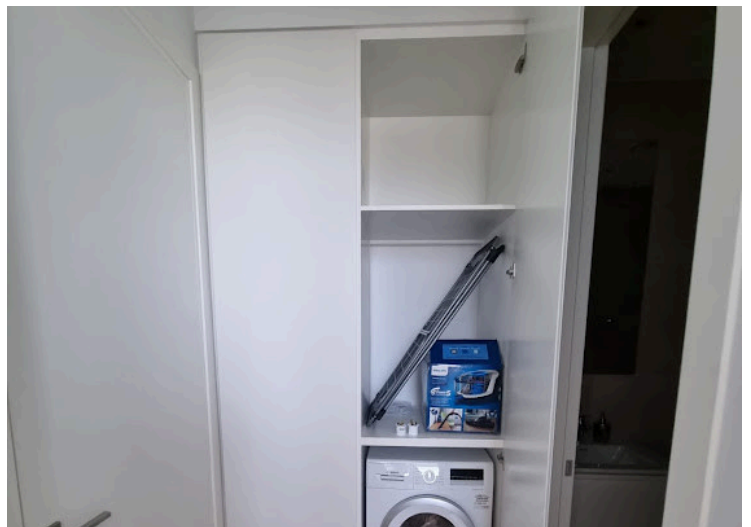
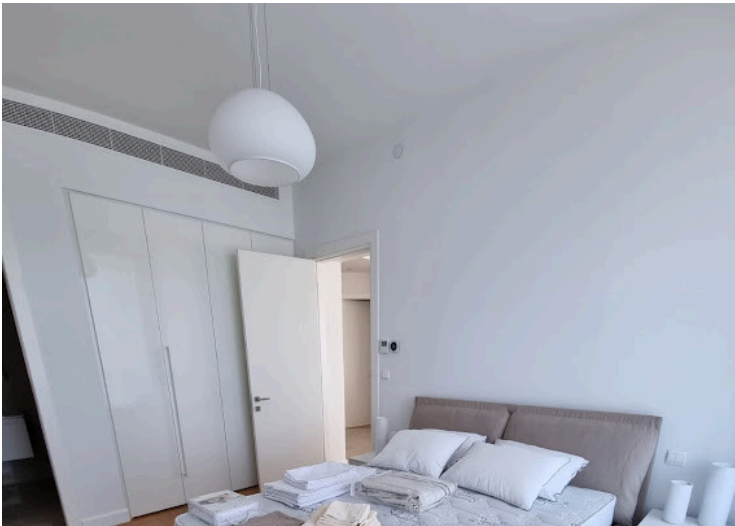
#11560

# 2 Bedroom Apartment For Rent Limassol

📍 Potamos Germasogeia, Potamos Germasogeia, Limassol

€4,500 /month





# Overview

## Specifications

Bedrooms

 2


Bathrooms

 2

Covered

 90.6 m<sup>2</sup>

Type	<b>Apartment</b>
Toilets	<b>2</b>
Plot	<b>118.1 m<sup>2</sup></b>
Covered veranda	<b>27.5 m<sup>2</sup></b>

Status	<b>Key ready</b>
Year of construction	<b>2022</b>
Furnished	<b>Fully furnished</b>
Energy efficiency rating	 <b>A+</b>

## Description

A stunning two bedroom apartment in a premium residential complex, located in the tourist area of Limassol, within a walking distance to the beaches, shops, boutiques, pharmacies, cafes, restaurants and any other urban and resort infrastructure.

It offers a luxury living with access to the outdoor and indoor swimming pools, sauna and steam room, fully-equipped gym, dedicated kids' room, and round-the-clock security.

The apartment offers breathtaking views to the sea and city skyline from the large veranda, and comes fully furnished and equipped with top-of-the-line electrical appliances, kitchen utensils, bed linen, towels, and more, ensuring your comfort and convenience from day one.

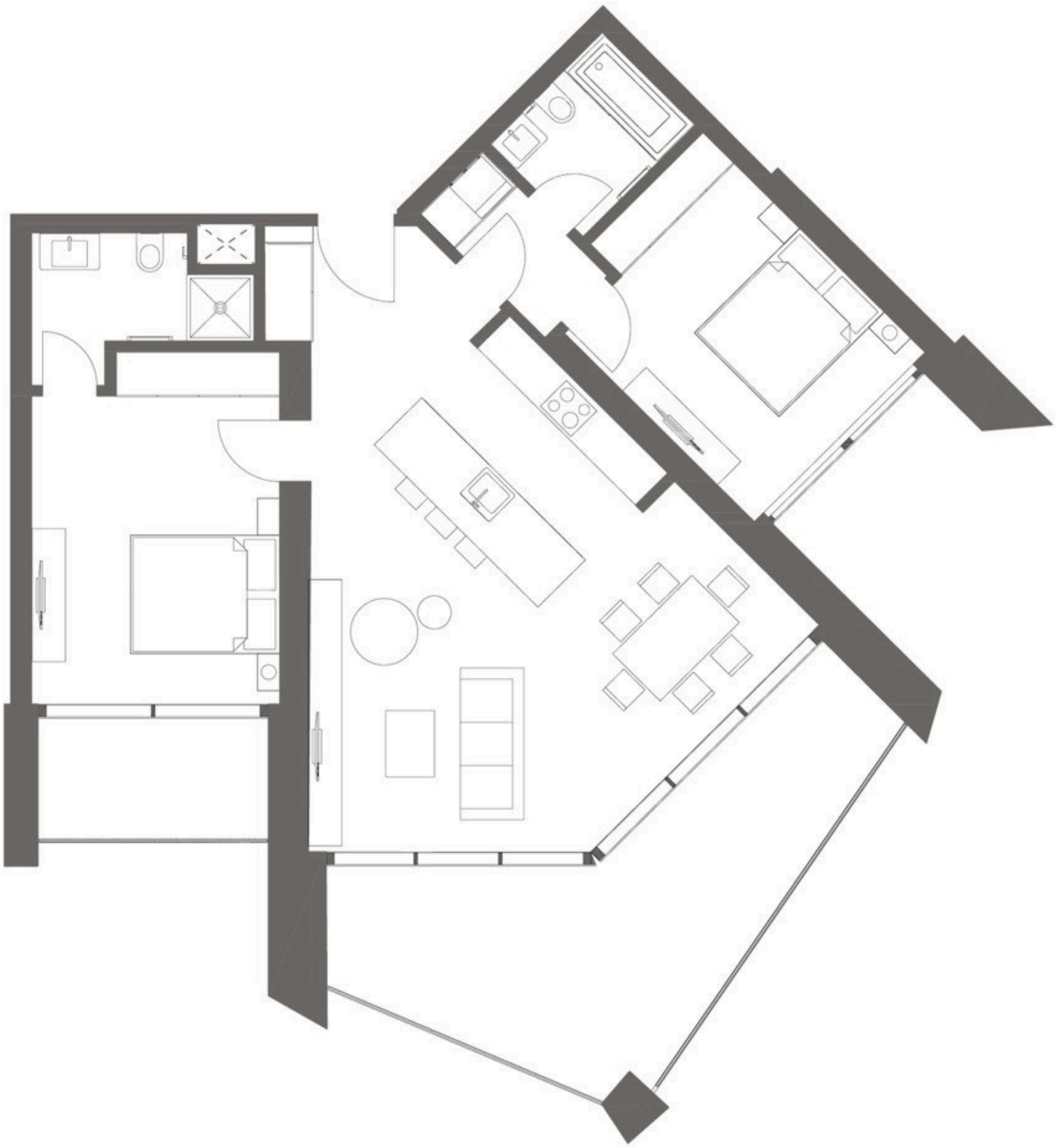
Characteristics:

- Open plan living area and a kitchen
- 2 Bedrooms
- 2 Bathrooms
- Covered veranda 27.5 m<sup>2</sup>
- Store room
- Covered parking space.

Technical specifications:

- VRV air conditioning system
- Underfloor heating
- Windows of a high thermal and sound insulation
- Built-in wardrobes, kitchen cupboards and bathroom furniture
- Electrical appliances Bosch
- High-end sanitary ware
- Security entrance door

# Floor plans



# Additional information

## Facilities

Aircondition, Central system

Gym

Pool, Communal

Elevator

Heating, Underfloor

Solar water heater

Gated complex

Parking, Covered

## Features

Double glazing

En suite shower

Kitchen appliances

Near amenities

Veranda, large

Easy access to main roads

Fitted wardrobes

Luxury specifications

Near bus route

Walking distance to beach

En suite bathroom

High ceilings

Modern design

Sea view

## Distances

Amenities

 200 m

Airport

 65 km

Sea

 300 m

Public transport

 300 m

Schools

 500 m