

#11552

# 750sqm Shop With Mezzanine For Rent Limassol

📍 Potamos Germasogeia, LIMASSOL

€20,000 /month




# Overview

## Specifications

Covered

 **420 m<sup>2</sup>**

Type	<b>Shop</b>
Toilets	<b>3</b>
Plot	<b>750 m<sup>2</sup></b>
Mezzanine	<b>330 m<sup>2</sup></b>

Status	<b>Key ready</b>
Year of construction	<b>2016</b>
Furnished	<b>Unfurnished</b>
Energy efficiency rating	 <b>Exempt</b>

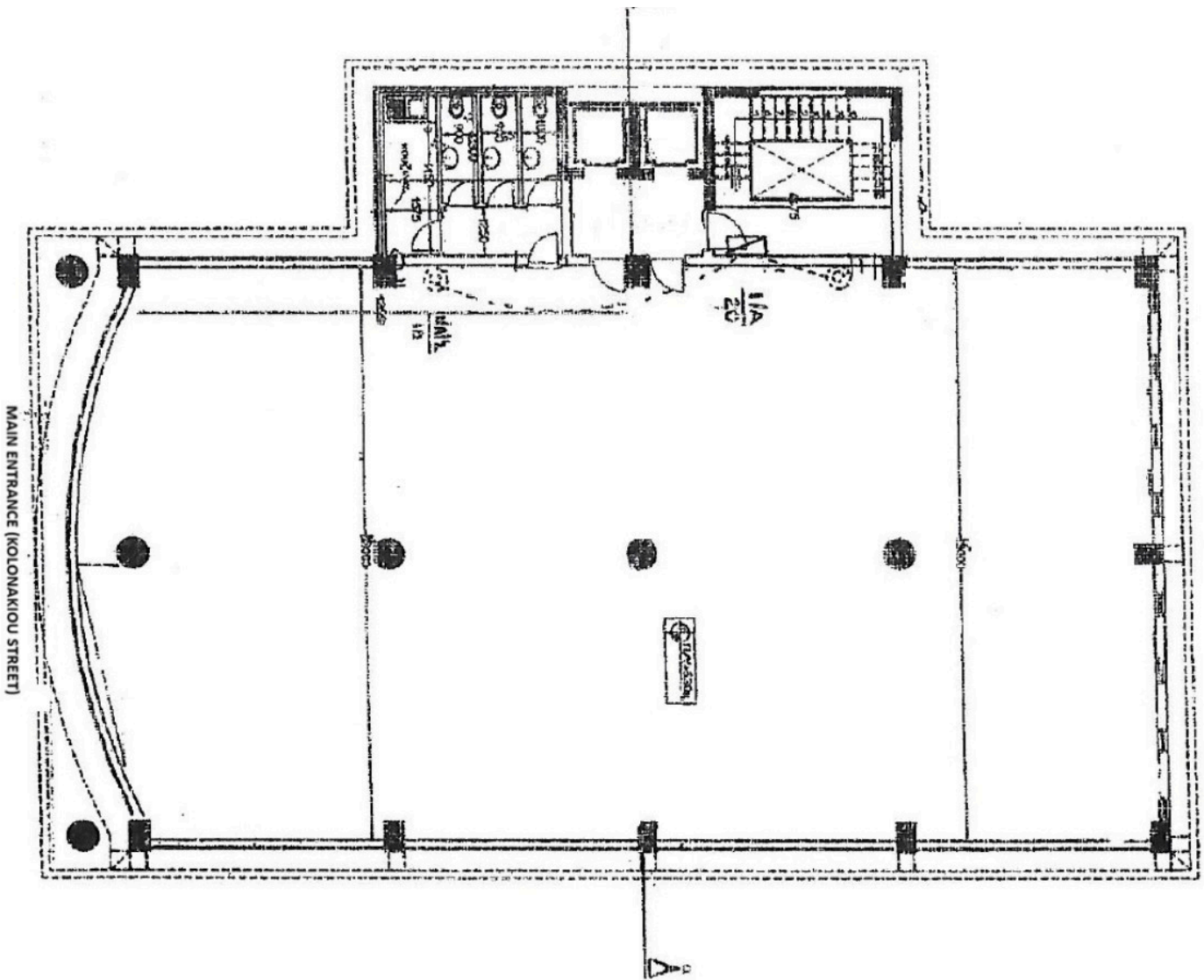
## Description

Exceptional commercial space available for rent in the heart of Limassol street. Offering excellent visibility, high traffic exposure, and a spacious layout, this property is ideal for premium retail, showroom, or corporate use.

- 420 sqm ground floor
- 330 sqm mezzanine
- High-visibility commercial position
- Excellent exposure & accessibility
- Ideal for showroom, retail, or offices

Reg No: 864 License No. 272/E

# Floor plans



## Additional information