

#11543

2 Bedroom For Rent Limassol

 Columbia, Potamos Germasogeia, Limassol

€3,300 /month





Overview

Specifications

Bedrooms



2

Bathrooms




2

Covered



86 m²

Type	Apartment
Toilets	2
Plot	111.2 m²
Covered veranda	25.2 m²

Status	Key ready
Year of construction	2020
Furnished	Fully furnished
Energy efficiency rating	 A

Description

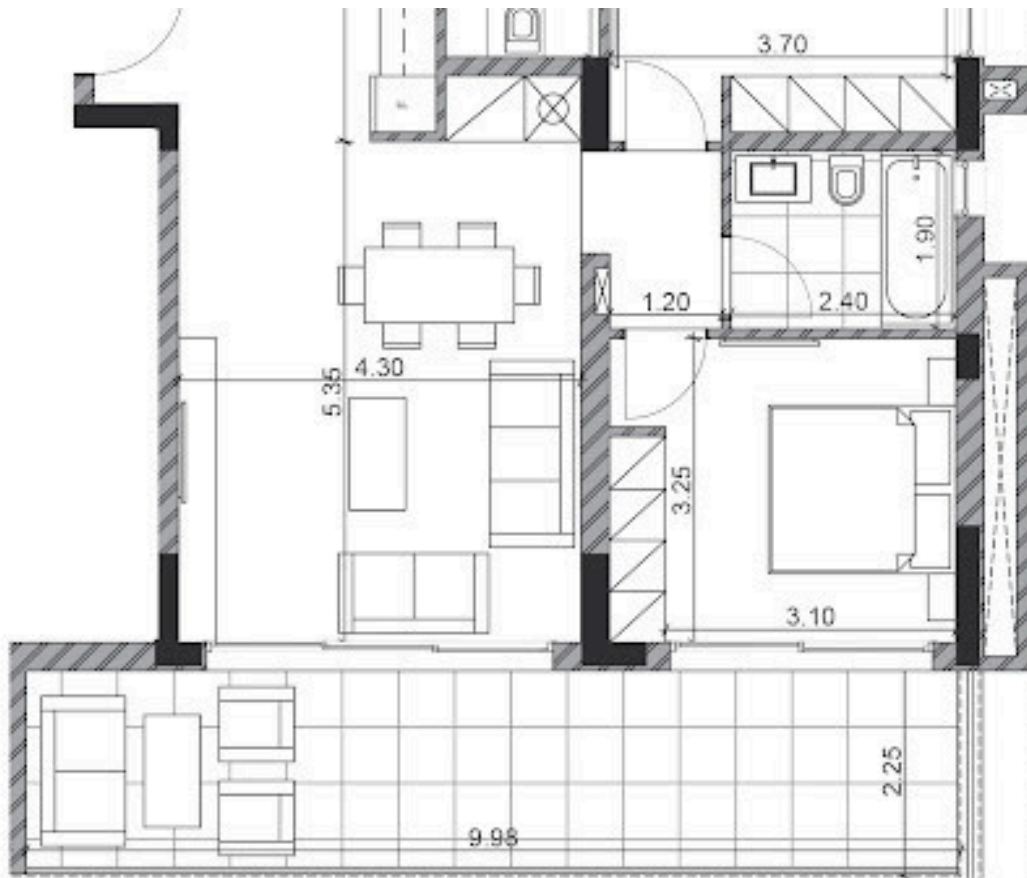
Two-bedroom apartment in an ultra modern complex that is located in a quiet residential neighbourhood and includes seven 1-, 2-, and 3-bedroom apartments and a luxury penthouse with a private swimming pool.

The elegant architecture, cosy planning solutions and top-of-the-line finishes will surprise those who value true style and comfort. The cleverly designed master plan provides convenient access to the common swimming pool, recreational area and covered parking spaces.

Sandy beaches and popular tourist attractions are within a 5 minutes drive from the project, which guarantees your property will be a successful investment delivering a generous capital growth and solid rental yields.

Reg No: 864 License No. 272/E

Floor plans



Additional information

Facilities

Aircondition, Split system

Elevator

Parking, Covered

Storage

Features

Bath

Ceramic tiles

Combined kitchen and dining area

Double glazing

Easy access to highway

Easy access to main roads

Fitted wardrobes

Kitchen appliances

Modern design

Near amenities

Near bus route

Open plan

Shower

Veranda

Distances

Amenities

 **400 m**

Airport

 **60 km**

Sea

 **1.6 km**

Public transport

 **200 m**

Schools

 **500 m**