

#11514

# 2 Bedroom Apartment For Sale Limassol

 Tsiflikoudia, Tsiflikoudia

**€515,000** +VAT





# Overview

## Specifications

Bedrooms

 2


Bathrooms

 2

Covered

 66 m<sup>2</sup>

Type	<b>Apartment</b>
Plot	<b>104 m<sup>2</sup></b>
Covered veranda	<b>38 m<sup>2</sup></b>

Status	<b>Off plan</b>
Year of construction	<b>2028</b>
Energy efficiency rating	 <b>A</b>

## Description

Located in one of Limassol's most dynamic and fast-growing districts. The project is a contemporary residential development that brings together style, practicality, and effortless urban living.

Offering a curated selection of studios, one-bedroom, and two-bedroom apartments, each residence is thoughtfully designed to maximize space, natural light, and everyday comfort, all while reflecting a clean, modern aesthetic.

Just moments from the city's vibrant waterfront, residents enjoy immediate access to Limassol Marina, thriving business hubs, popular dining spots, and essential amenities. Despite its central location, it preserves a sense of tranquility and privacy, creating a welcoming retreat from the city's energy.

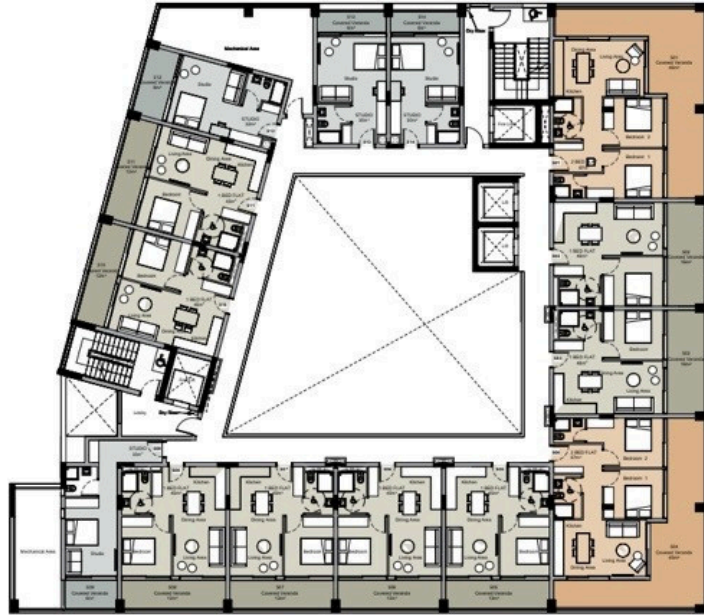
With excellent connectivity to major road networks and key destinations across Limassol, the project offers the perfect balance of convenience and lifestyle where contemporary design meets coastal living in one of the city's most promising locations.

Reg No. 864 License No. 272/E

# Floor plans

## FLOOR PLANS

### Fifth Floor



## FLOOR PLANS

### Basement



# Additional information

## Distances

Amenities

 300 m

Airport

 50 km

Sea

 200 m

Public transport

 300 m

Schools

 1 km

Resort

 1 km