

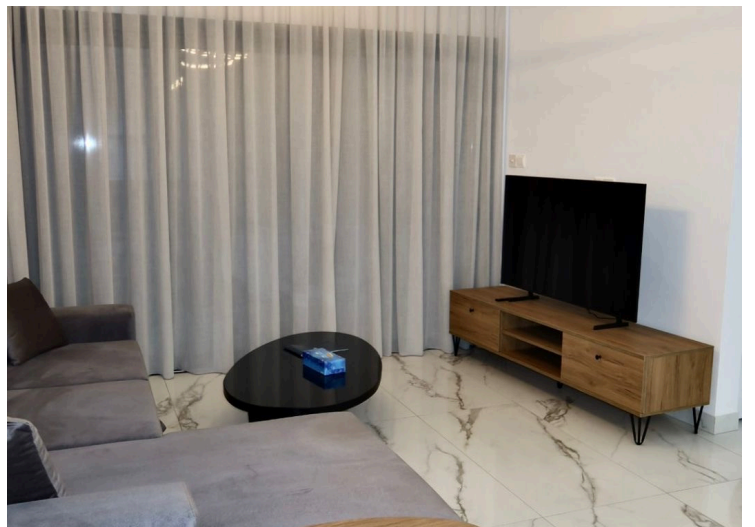
#11326

# 2 Bedroom Apartment For Rent Ypsonas Limassol

 Ypsonas, LIMASSOL

**€1,850** /month





# Overview

## Specifications

Bedrooms

 2


Bathrooms

 2

Covered

 80 m<sup>2</sup>

|                 |                         |
|-----------------|-------------------------|
| Type            | <b>Apartment</b>        |
| Toilets         | <b>3</b>                |
| Plot            | <b>95 m<sup>2</sup></b> |
| Covered veranda | <b>15 m<sup>2</sup></b> |

|                          |   |
|--------------------------|---|
| Status                   | <b>Key ready</b>  |
| Year of construction     | <b>2025</b>   |
| Furnished                | <b>Fully furnished</b>  |
| Energy efficiency rating |  <b>B+</b> |

## Description

A stylish and brand-new apartment built in 2025, offering modern living in a quiet area with beautiful city and sea views. Fully furnished and ready to move in, this property combines comfort, convenience, and contemporary design.

### Property Details:

- \* 2nd floor
- \* 1 parking space (covered)
- \* 1 living room
- \* 1 kitchen
- \* 2 bedrooms
- \* 2 bathrooms
- \* 3 toilets (including guest WC)
- \* Fully furnished
- \* Year of construction: 2025
- \* Energy efficiency rating: B+

### Areas:

- \* Covered area: 80 m<sup>2</sup>
- \* Covered veranda: 15 m<sup>2</sup>
- \* Total plot: 95 m<sup>2</sup>

### Distances:

- \* Amenities: 3 km
- \* Airport: 60 km
- \* Sea: 10 km
- \* Public transport: 150 m

### Facilities:

- \* Split system air conditioning

# Additional information

## Facilities

Aircondition, Split system

Elevator

Parking, Covered

Storage

## Features

Ceramic tiles

City view

Combined kitchen and dining area

Double glazing

Easy access to highway

Guest WC

Kitchen appliances

Modern design

Near bus route

Open plan

Quiet area

Sea view

Veranda

## Distances

Amenities



**3 km**

Airport



**60 km**

Sea



**10 km**

Public transport



**150 m**