

#11295

Studio For Sale Tsiflikoudia Limassol

 Tsiflikoudia, Tsiflikoudia

€269,000 +VAT





Overview

Specifications

Bedrooms

 **Studio**


Bathrooms

 **1**

Covered

 **30 m²**

Type	Apartment
Plot	37 m²
Covered veranda	7 m²

Status	Off plan
Year of construction	2028
Energy efficiency rating	 A

Description

Located in one of Limassol's most dynamic and fast-growing districts. The project is a contemporary residential development that brings together style, practicality, and effortless urban living.

Offering a curated selection of studios, one-bedroom, and two-bedroom apartments, each residence is thoughtfully designed to maximize space, natural light, and everyday comfort, all while reflecting a clean, modern aesthetic.

Just moments from the city's vibrant waterfront, residents enjoy immediate access to Limassol Marina, thriving business hubs, popular dining spots, and essential amenities. Despite its central location, it preserves a sense of tranquility and privacy, creating a welcoming retreat from the city's energy.

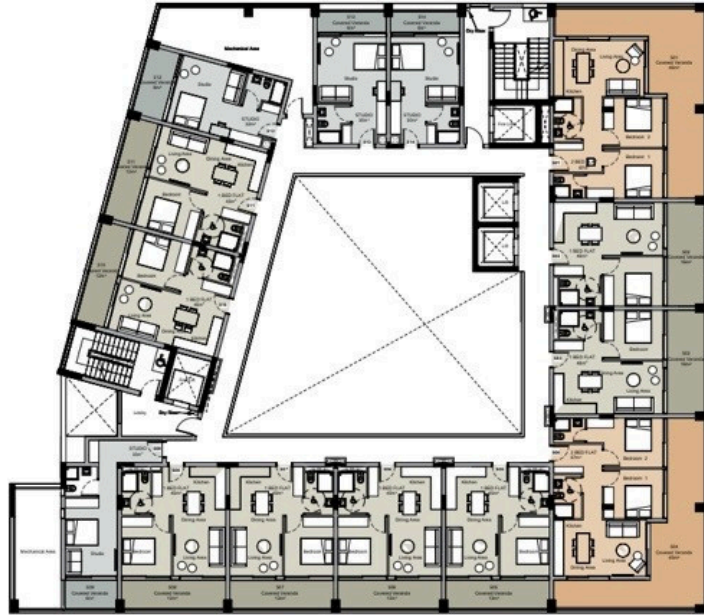
With excellent connectivity to major road networks and key destinations across Limassol, the project offers the perfect balance of convenience and lifestyle where contemporary design meets coastal living in one of the city's most promising locations.

Reg No. 864 License No. 272/E

Floor plans

FLOOR PLANS

Fifth Floor



FLOOR PLANS

Basement



Additional information

Distances

Amenities

 300 m

Airport

 50 km

Sea

 300 m

Public transport

 300 m

Schools

 1 km

Resort

 1 km