

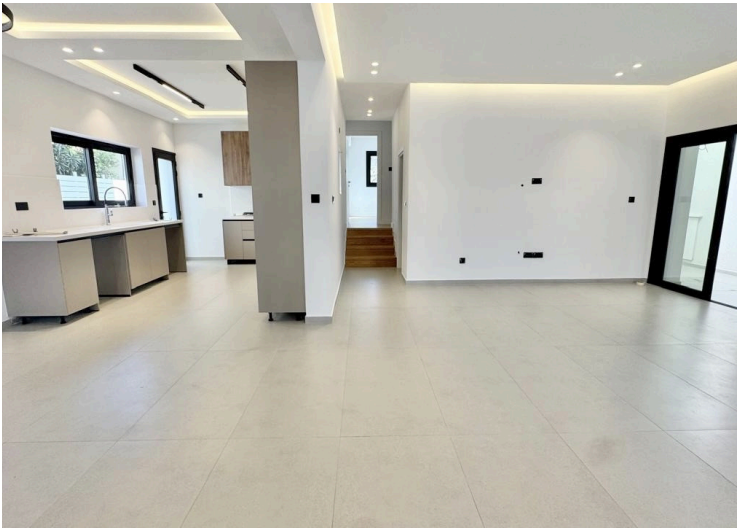
#11048

# 4 Bedroom Semi - Detached House For Sale Kato Polemidia Limassol

📍 Kato Polemidia, Polemidia, Limassol

€890,000







# Overview

## Specifications

Bedrooms	Bathrooms	Covered
 4	 3	 400 m <sup>2</sup>
Type	Semi-Detached Villa	
Toilets	4	Year of construction
Plot	269 m <sup>2</sup>	2005
		Furnished
		Unfurnished
		Energy efficiency rating
		 Exempt

## Description

### Property Overview :

- \* Fully renovated three-level house, completed in 2026
- \* Total internal area: approximately 400 m<sup>2</sup>
- \* Built on a 269 m<sup>2</sup> plot with a 538 m<sup>2</sup> share of land
- \* Fully air-conditioned throughout
- \* Solid wood flooring across living areas and bedrooms

### Ground Floor :

- \* Spacious open-plan living and dining area
- \* Brand new modern kitchen
- \* Full-height ceilings with recessed spotlights
- \* Three large windows with new aluminium frames
- \* Guest WC
- \* Shared bathroom with shower
- \* Bedrooms with fitted wardrobes, one larger than the others
- \* Air conditioning installed
- \* Small partially covered veranda with direct access from this level

### Lower Ground Floor (Basement Level) :

- \* Self-contained one-bedroom apartment
- \* Private shower bathroom
- \* Ideal for guests, rental income, or independent living
- \* Direct access to garden (approx. 3 m x 15 m)
- \* Driveway access to this level
- \* Covered parking for 1 car
- \* Additional driveway parking for 3–4 cars

### First Floor – Separate Apartment :

- \* Completely independent apartment with its own entrance

# Additional information

## Facilities

Aircondition, Split system

Parking, Covered

## Features

Attic

Ceramic tiles

Combined kitchen and dining area

Double glazing

Easy access to main roads

Fitted wardrobes

Garden

Guest WC

Internal stairs

Modern design

Near amenities

Near bus route

Open plan

Parquet flooring

Shower

Veranda

## Distances


Airport

 64 km

Sea

 4 km

Public transport

 260 m