

#11010

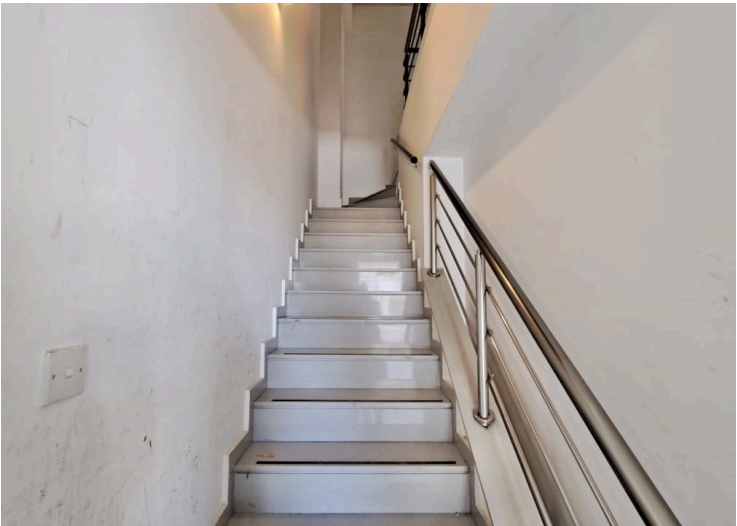
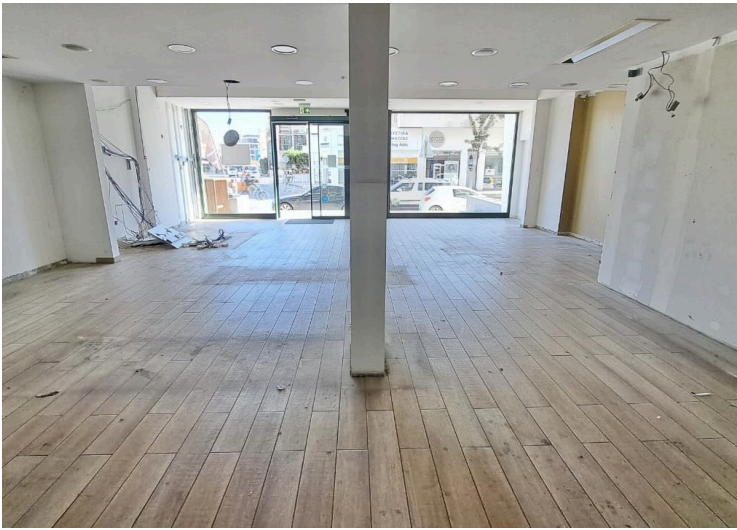
# Spacious Commercial Shop with Mezzanine Mesa Geitonia Limassol

📍 Mesa Geitonia, Limassol

€2,800 /month








# Overview

## Specifications

Covered

 101 m<sup>2</sup>

Type	Shop	Status	Used
Toilets	2	Year of construction	2015
Plot	161 m <sup>2</sup>	Furnished	Unfurnished
Mezzanine	60 m <sup>2</sup>	Energy efficiency rating	 Exempt

## Description

This versatile commercial shop offers a total covered area of 101 m<sup>2</sup>, set on a 161 m<sup>2</sup> plot, with an additional 60 m<sup>2</sup> mezzanine, making it ideal for retail, showroom, office, or service-oriented use.

The property features one kitchen and two toilets, and is offered unfurnished, allowing you to customize the space to suit your business needs.

The interior combines parquet flooring and ceramic tiles, creating a modern and practical working environment. Internal stairs connect the main area to the mezzanine, maximizing usable space.

Comfort is ensured year-round with central air conditioning, while double-glazed windows enhance energy efficiency and noise insulation.

Strategically located with easy access to main roads and the highway, the shop is also near public transport, bus routes, and local amenities, ensuring excellent visibility and convenience for both customers and staff. The airport is approximately 64 km away.

### Key Features:

- \* Covered area: 101 m<sup>2</sup>
- \* Mezzanine: 60 m<sup>2</sup>
- \* Plot size: 161 m<sup>2</sup>
- \* 1 kitchen, 2 toilets
- \* Central air conditioning
- \* Parquet & ceramic flooring
- \* Double glazing
- \* Internal stairs
- \* Prime location near amenities and transport links

A smart choice for businesses seeking accessibility, flexibility, and a well-connected location.

# Additional information

## Facilities

Aircondition, Central system

## Features

- |                           |                 |                        |
|---------------------------|-----------------|------------------------|
| Ceramic tiles             | Double glazing  | Easy access to highway |
| Easy access to main roads | Internal stairs | Kitchen                |
| Near amenities            | Near bus route  | Near public transport  |
| Parquet flooring          |                 |                        |

## Distances

Airport



64 km