

#11002

2 Bedroom Luxury Penthouse For Sale Kato Paphos

 Kato Paphos, Paphos





€625,000 +VAT





Overview

Specifications

Bedrooms		Bathrooms		Covered	
 2		 2		 84 m ²	
Type		Apartment			
Plot		100 m ²			
Covered veranda		16 m ²			
Uncovered veranda		80 m ²			
Covered parking		20 m ²			
Status		Key ready			
Year of construction		2021			
Energy efficiency rating		 Exempt			

Description

Discover refined Mediterranean living in this exceptional 2-bedroom penthouse apartment, ideally situated in one of Kato Paphos’ most sought-after areas. Built in 2021 and offered key ready, this modern residence combines elegant design, generous outdoor living, and access to premium communal facilities—just minutes from the sea and local amenities.

Located on the top floor of a contemporary four-storey development, the penthouse offers 84 m² of covered internal space, complemented by a 16 m² covered veranda and an impressive 80 m² uncovered veranda. The expansive outdoor areas, including a private roof garden with jacuzzi, are perfect for entertaining or relaxing while enjoying panoramic sea and mountain views.

The interior features an open-plan kitchen, dining, and living area, finished with marble flooring and ceramic tiles, creating a bright and stylish atmosphere. The apartment includes two comfortable bedrooms, both with fitted wardrobes, and two modern bathrooms, including an en-suite shower. Large double-glazed windows enhance natural light while ensuring comfort and energy efficiency.

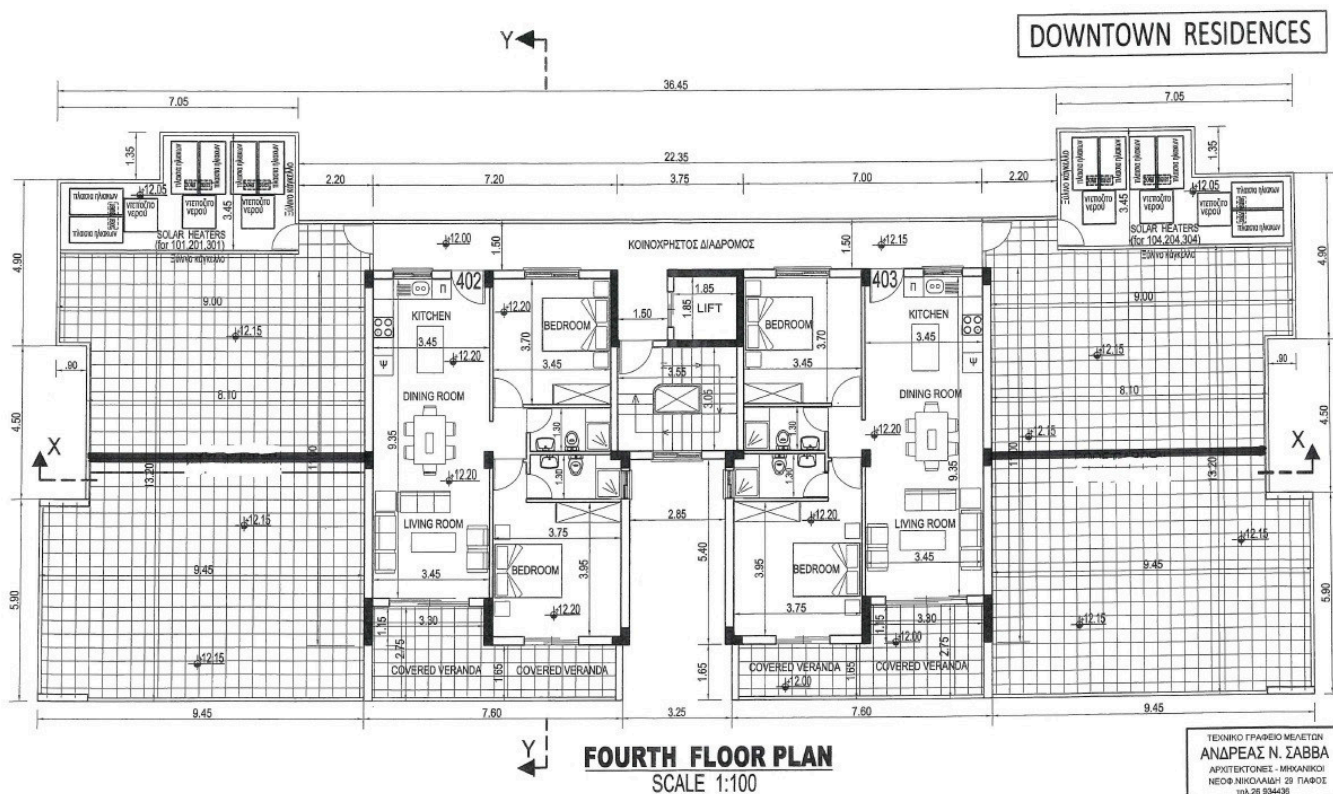
Designed for year-round living, the property is equipped with central air conditioning, underfloor heating, a pressurized water system, and a security alarm with CCTV. Additional conveniences include covered parking (20 m²), a private storage room, elevator access, and provision for an electric car charger.

Residents enjoy access to a wide range of resort-style communal facilities, including a swimming pool, gym, sauna, children’s playground, and beautifully landscaped gardens, all within a secure, gated complex.

Ideally positioned just 900 m from the sea, 1 km from amenities, 650 m from public transport, and 15.6 km from Paphos International Airport, this penthouse offers a rare blend of tranquility, luxury, and convenience with easy access to main roads.

An outstanding opportunity for a permanent residence, holiday home, or high-end investment in the heart of Kato Paphos.

Floor plans



ΤΕΧΝΙΚΟ ΓΡΑΦΕΙΟ ΜΕΛΕΤΩΝ	
ΑΝΔΡΕΑΣ Ν. ΣΑΒΒΑ	
ΑΡΧΙΤΕΚΤΟΝΕΣ - ΜΗΧΑΝΙΚΟΙ	
ΝΕΦΑ ΝΙΚΟΛΑΪΔΗ 29 ΠΛΑΤΟΣ	
ΤΗΛ. 25 534435	
ΟΙΚΟΔΟΜΗ:	
Κ.Κ.& Λ. Χ#VASILI LTD	
στην ΠΛΑΤΩ	
κλίμακα 1:100	παραρτημένο 04.05.2017
ΤΙΤΛΟΣ:	
FOURTH FLOOR PLAN	
ΑΡ. ΜΕΛΕΤΗΣ 1110	ΑΡ. ΣΧΕΔΙΟΥ 6

Additional information





Facilities

Aircondition, Central system	Childrens playground	Elevator
Gym	Heating, Underfloor	Landscaped garden
Parking, Covered	Pool, Communal	Sauna
Storage		

Features

Alarm system	CCTV	Ceramic tiles
Combined kitchen and dining area	Double glazing	Easy access to main roads
Electric car charger (provision)	En suite shower	Entrance gate
Fitted wardrobes	Jacuzzi	Marble flooring
Modern design	Mountain view	Near amenities
Open plan	Panoramic view	Pressurized water system
Quiet area	Roof garden	Sea view
Shower	Veranda	

Distances

Amenities  1 km	Airport  15.6 km	Sea  900 m
Public transport  650 m		