

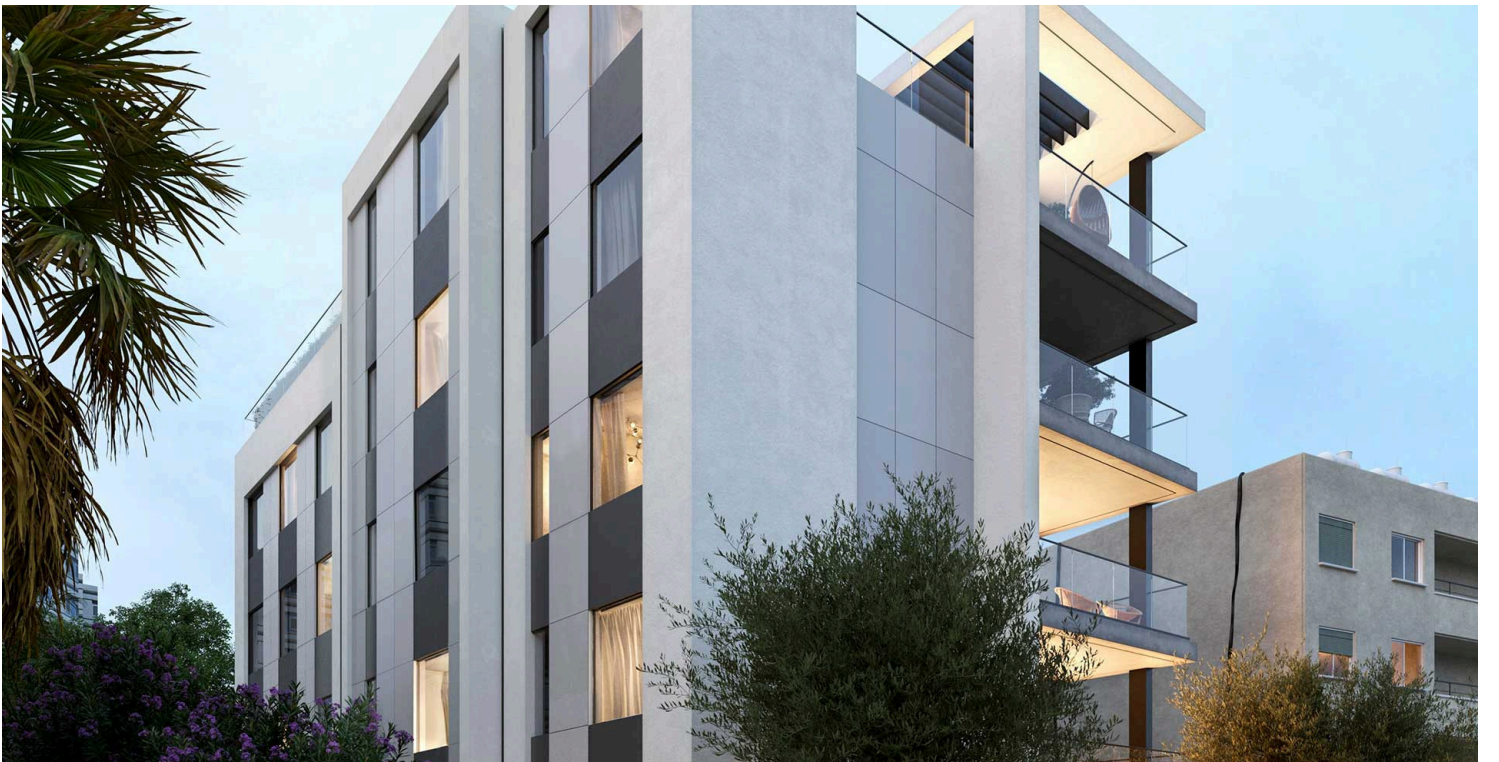
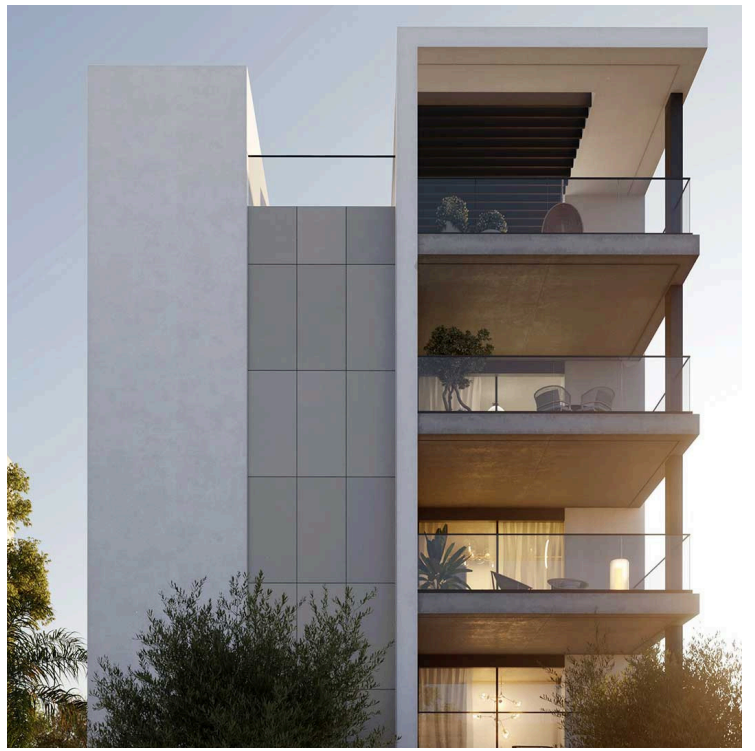
#10828

# 2 Bedroom Apartment For Sale Potamos Germasogeias

📍 Potamos Germasogeia, Potamos Germasogeia, Limassol

€660,000 +VAT





# Overview

## Specifications

Bedrooms



Bathrooms



Covered



Type	<b>Apartment</b>
Toilets	<b>2</b>
Plot	<b>129.8 m<sup>2</sup></b>

Covered veranda	<b>21 m<sup>2</sup></b>
Year of construction	<b>2027</b>
Energy efficiency rating	<b>A</b>

## Description

Discover contemporary living in this beautifully designed 2-bedroom, 2-bathroom apartment situated on the 1st floor of an exclusive 4-storey development scheduled for completion in 2027. With premium finishes, generous indoor spaces, and close proximity to the sea and essential amenities, this residence is ideal for both permanent living and a high-yield investment.

### Property Features:

- \* Covered Area: 83 m<sup>2</sup>
- \* Covered Veranda: 21 m<sup>2</sup>
- \* Total Plot Area: 129.8 m<sup>2</sup>
- \* Energy Efficiency Rating: A
- \* Open-plan layout seamlessly combining the kitchen, dining, and living areas
- \* High ceilings enhancing natural light and spaciousness
- \* Marble and parquet flooring for a refined, modern aesthetic
- \* Luxury specifications throughout
- \* Double glazing, alarm system, and VRV central air-condition system
- \* Elevator access
- \* Covered parking
- \* Facilities
- \* Underfloor heating
- \* Communal swimming pool
- \* Gated complex for enhanced privacy and security

### Location & Distances:

- \* Amenities: 200 m
- \* Public transport: 200 m
- \* Sea: 800 m
- \* Schools: 3.5 km
- \* Resort: 8 km
- \* Airport: 64 km



# Additional information

## Facilities

Aircondition, Central system

Heating, Underfloor

Elevator

Parking, Covered

Gated complex

Pool, Communal

## Features

Alarm system

Double glazing

High ceilings

Near amenities

Parquet flooring

Bath

Easy access to main roads

Luxury specifications

Near bus route

Veranda

Combined kitchen and dining area

En suite shower

Marble flooring

Open plan

## Distances

Amenities

 200 m

Airport

 64 km

Sea

 800 m

Public transport

 200 m

Schools

 3.5 km

Resort

 8 km