

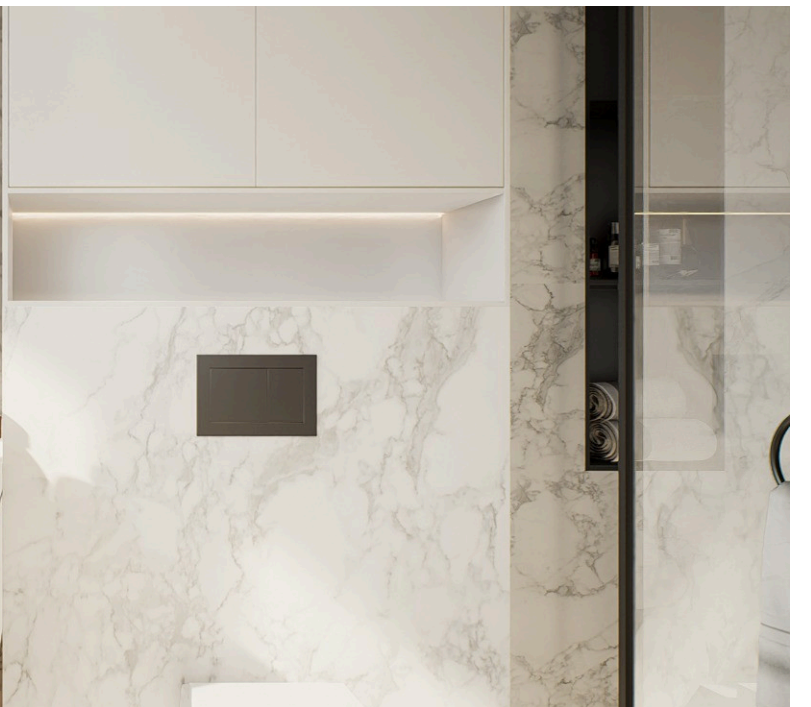
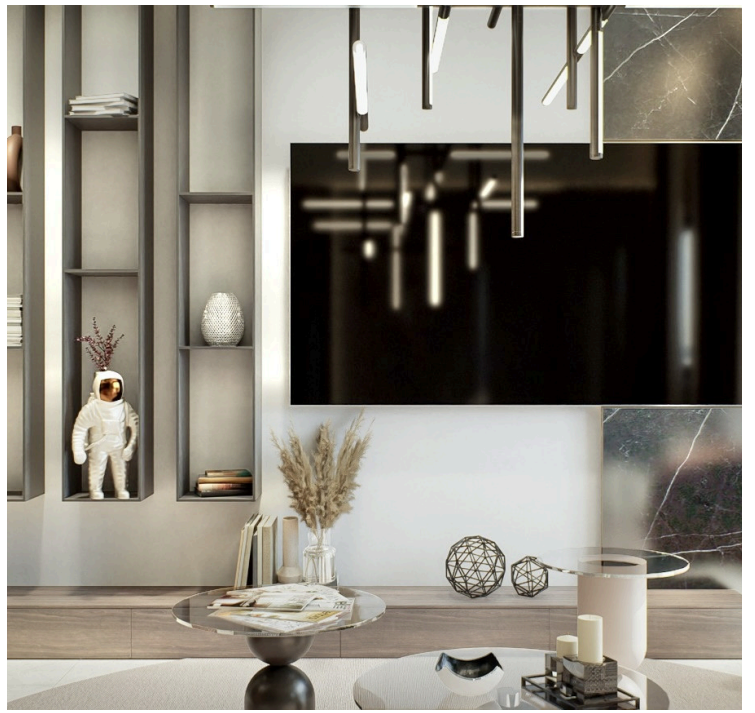
#10756

1 Bedroom For Sale Mesa Geitonia Limassol

📍 Mesa Geitonia, Limassol

€245,000 +VAT





Overview

Specifications

Bedrooms



1

Bathrooms




1

Covered



50 m²

Type	Apartment
Plot	56 m²
Covered veranda	6 m²
Status	Under construction

Year of construction	2025
Furnished	Fully furnished
Energy efficiency rating	 A

Description

Discover contemporary comfort in this stylish one-bedroom apartment located in a beautiful modern residential project set in the prestigious district of Mesa Geitonia, Limassol. This thoughtfully designed home combines functionality, elegance, and urban sophistication—perfect for professionals, couples, or as a smart investment.

The apartment features a bright open-plan living and dining area, a fully equipped modern kitchen, a spacious bedroom, and a well-appointed bathroom. It comes fully furnished, ready for immediate move-in or rental. Enjoy outdoor relaxation on your covered veranda overlooking the landscaped surroundings.

The Project offers a secure and comfortable lifestyle with gated access, private parking, storage space, and beautifully landscaped greenery. Residents can also enjoy roof gardens and the peace of mind of Energy Class A construction, ensuring low running costs and sustainability.

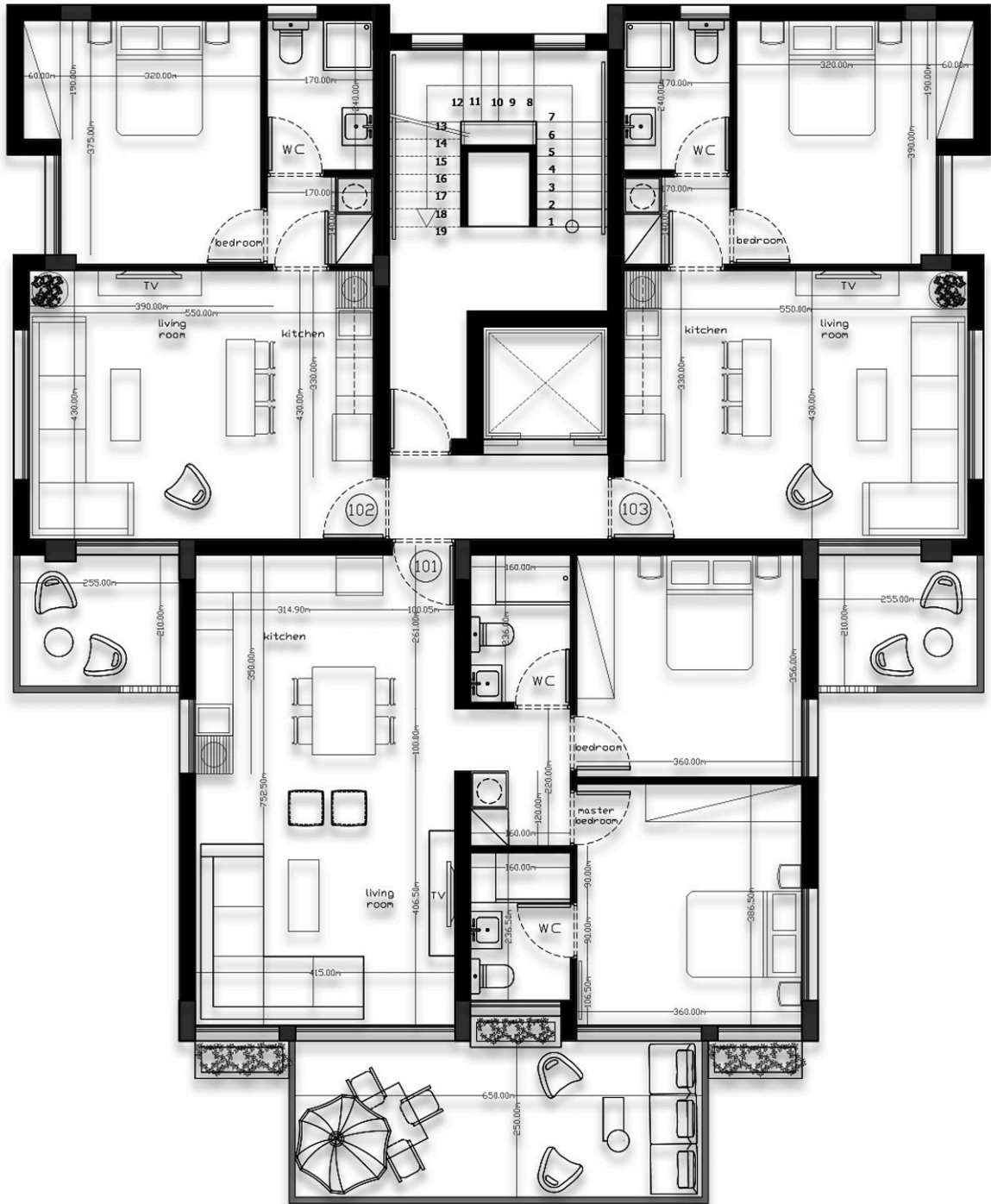
Ideally located just minutes from Limassol's beaches and vibrant city center, the property provides excellent connectivity:

- * Amenities: 2.7 km
- * Schools: 1.6 km
- * Sea: 3.9 km
- * Airport: 64 km

Key Features:

- * 1 Bedroom | 1 Bathroom
- * Open-plan kitchen & living room
- * Fully furnished
- * Covered veranda (6 m²)
- * Private parking & storage
- * Secure gated entrance
- * Energy Efficiency Class A

Floor plans



Additional information

Facilities

Elevator

Parking, Covered

Storage

Features

Ceramic tiles

City view

Combined kitchen and dining area

Double glazing

Easy access to highway

Easy access to main roads

Modern design

Near amenities

Open plan

Veranda

Distances

Amenities



2.7 km

Airport



64 km

Sea



3.9 km

Schools



1.6 km