

#10744

2 Bedroom Apartment For Sale Agios Athanasios Limassol

📍 Agios Athanasios, Limassol

€330,000 +VAT





Overview

Specifications

Bedrooms		Bathrooms		Covered	
 2		 2		 76 m ²	
Type		Apartment			
Plot		86.3 m ²			
Covered veranda		10.3 m ²			
Year of construction		2027			
Furnished		Fully furnished			
Energy efficiency rating		 Exempt			

Description

Introducing a new level of contemporary living in the sought-after neighborhood of Agios Athanasios, Limassol. This beautifully designed development combines modern architecture with functionality and comfort, offering an exceptional residential experience in a peaceful yet connected setting.

This second-floor, fully furnished 2 bedroom apartment features an open-plan living, dining, and kitchen area, seamlessly extending onto a spacious veranda that invites outdoor relaxation and city views. The interiors showcase modern finishes, double glazing, and abundant natural light, ensuring a warm and welcoming atmosphere.

Residents will enjoy access to exclusive community amenities, including:

- * Private gym
- * Barbecue area and landscaped gardens
- * Children’s playground
- * Secure covered parking
- * Elevator and private storage
- * Solar photovoltaic panels for energy efficiency

Perfectly positioned, the residence is just:

- * 500 m from amenities
- * 400 m from public transport
- * 2.8 km from schools
- * 4.3 km from the sea
- * 62 km from Larnaca International Airport

Key Features:

- * 2 Bedrooms | 2 Bathrooms
- * Fully furnished
- * Covered parking space
- * Spacious verandas (covered & uncovered)
- * Energy-efficient design

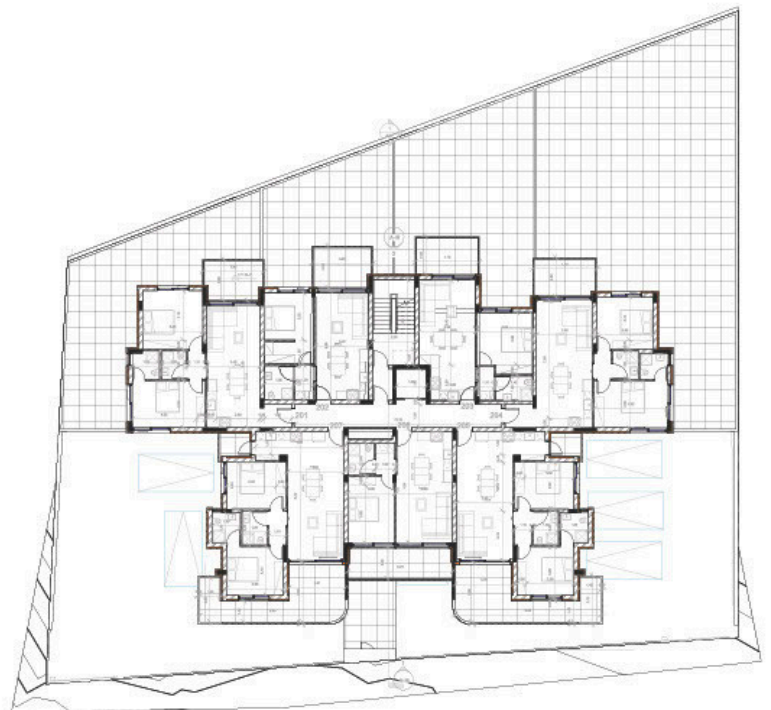
Floorplans

Ground Floor



9

2nd Floor



11

Additional information

Facilities

Childrens playground	Elevator	Gym
Parking, Covered	Solar photovoltaic panels	Storage

Features

Barbeque	City view	Combined kitchen and dining area
Double glazing	Easy access to highway	Easy access to main roads
Modern design	Near amenities	Near bus route
Open plan	Quiet area	Veranda

Distances

Amenities  500 m	Airport  62 km	Sea  4.3 km
Public transport  400 m	Schools  2.8 km	Resort  14 km