

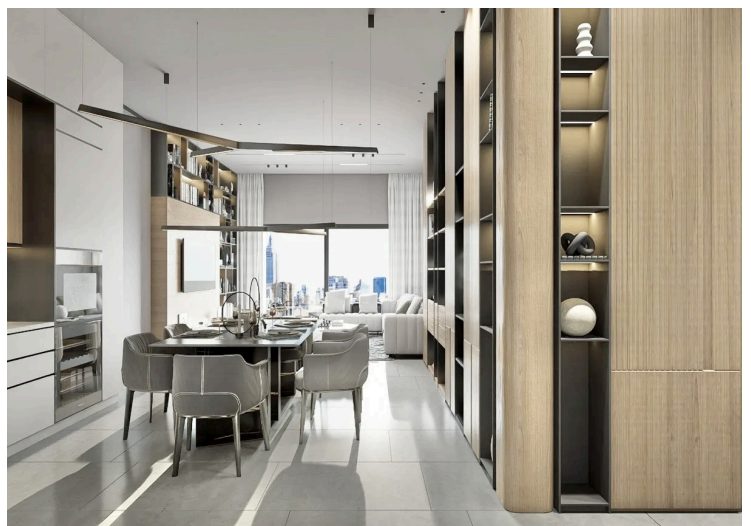
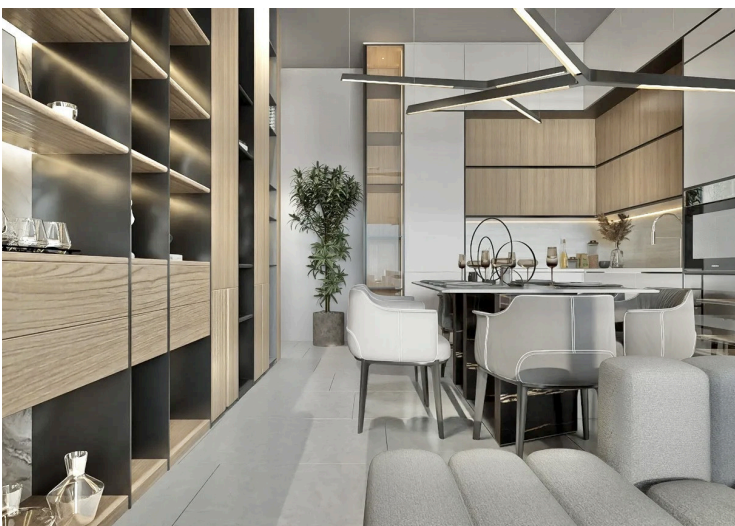
#10737

1 Bedroom Apartment For Sale Agios Athanasios Limassol

📍 Agios Athanasios, Limassol

€230,000 +VAT





Overview

Specifications

Bedrooms



1

Bathrooms



1

Covered

50 m²

Type	Apartment
Plot	131 m²
Covered veranda	11.7 m²
Uncovered veranda	63 m²

Year of construction	2027
Furnished	Fully furnished
Energy efficiency rating	Exempt

Description

Emeralda Five introduces a new level of contemporary living in the sought-after neighborhood of Agios Athanasios, Limassol. This beautifully designed development combines modern architecture with functionality and comfort, offering an exceptional residential experience in a peaceful yet connected setting.

This first-floor, fully furnished 1-bedroom apartment features an open-plan living, dining, and kitchen area, seamlessly extending onto a spacious veranda that invites outdoor relaxation and city views. The interiors showcase modern finishes, double glazing, and abundant natural light, ensuring a warm and welcoming atmosphere.

Residents of Emeralda Five enjoy access to exclusive community amenities, including:

- * Private gym
- * Barbecue area and landscaped gardens
- * Children's playground
- * Secure covered parking
- * Elevator and private storage
- * Solar photovoltaic panels for energy efficiency

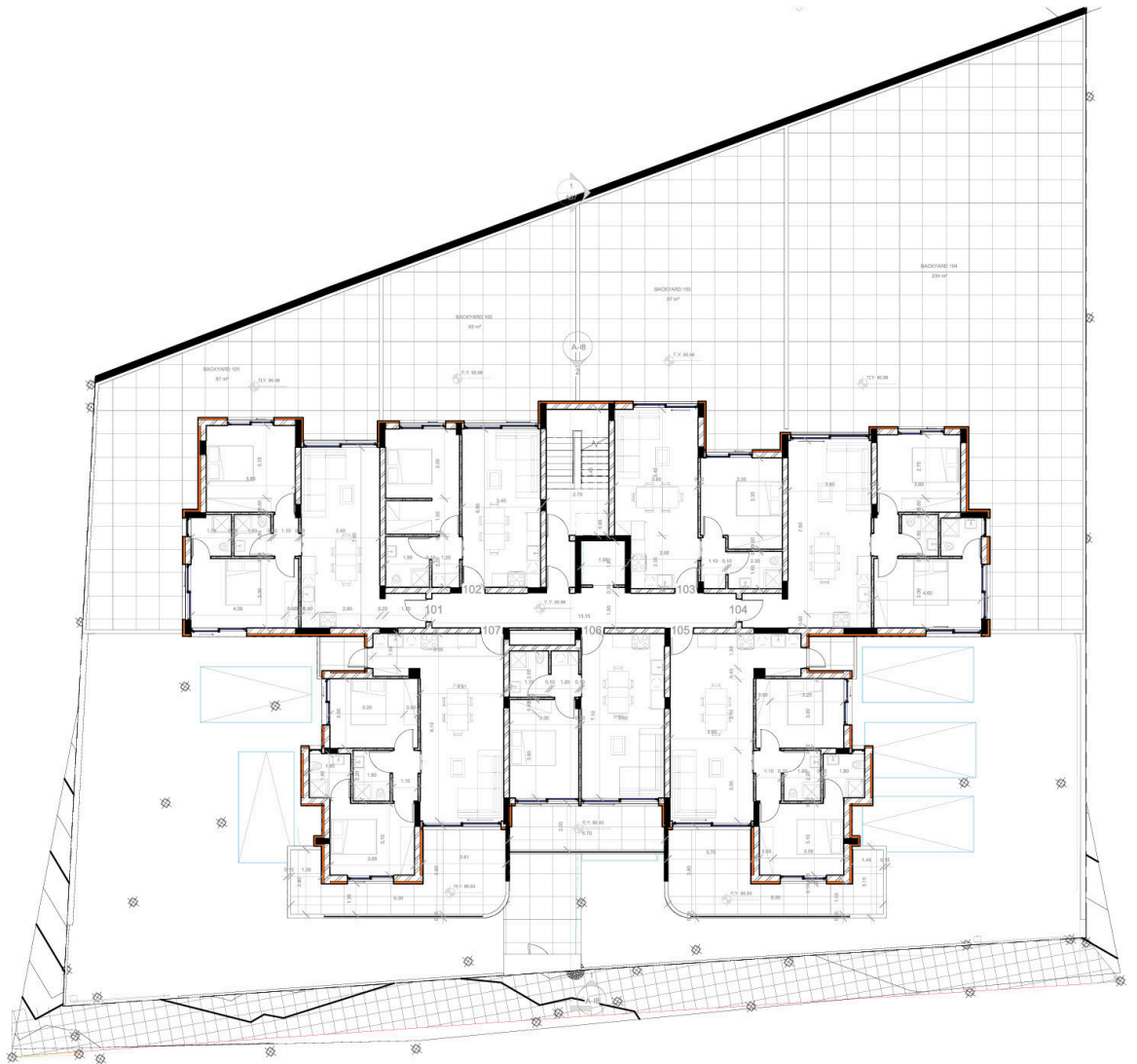
Perfectly positioned, the residence is just:

- * 500 m from amenities
- * 400 m from public transport
- * 2.8 km from schools
- * 4.3 km from the sea
- * 62 km from Larnaca International Airport

Key Features:

- * 1 Bedroom | 1 Bathroom
- * Fully furnished
- * Covered parking space
- * Spacious verandas (covered & uncovered)

Floor plans



Additional information

Facilities

Childrens playground

Elevator

Gym

Parking, Covered

Solar photovoltaic panels

Storage

Features

Barbeque

City view

Combined kitchen and dining area

Double glazing

Easy access to highway

Easy access to main roads

Modern design

Near amenities

Near bus route

Open plan

Quiet area

Veranda

Distances

Amenities

 500 m

Airport

 62 km

Sea

 4.3 km

Public transport

 400 m

Schools

 2.8 km

Resort

 14 km