

#10604

# 3 Bedroom Detached Villa For Sale Limassol

📍 Emba, Paphos

€560,000 +VAT





# Overview

## Specifications

Bedrooms

 3


Bathrooms

 2

Covered

 191 m<sup>2</sup>

Type	<b>Detached Villa</b>
Showers	<b>1</b>
Toilets	<b>3</b>
Plot	<b>395 m<sup>2</sup></b>

Covered veranda	<b>15 m<sup>2</sup></b>
Status	<b>Off plan</b>
Year of construction	<b>2027</b>
Energy efficiency rating	 <b>A</b>

## Description

Welcome to an exclusive collection of 20 detached family homes, perfectly situated in the charming and tranquil neighborhood of Emba, Pafos. Designed for permanent residence, this serene and sought-after location seamlessly combines peaceful living with modern convenience.

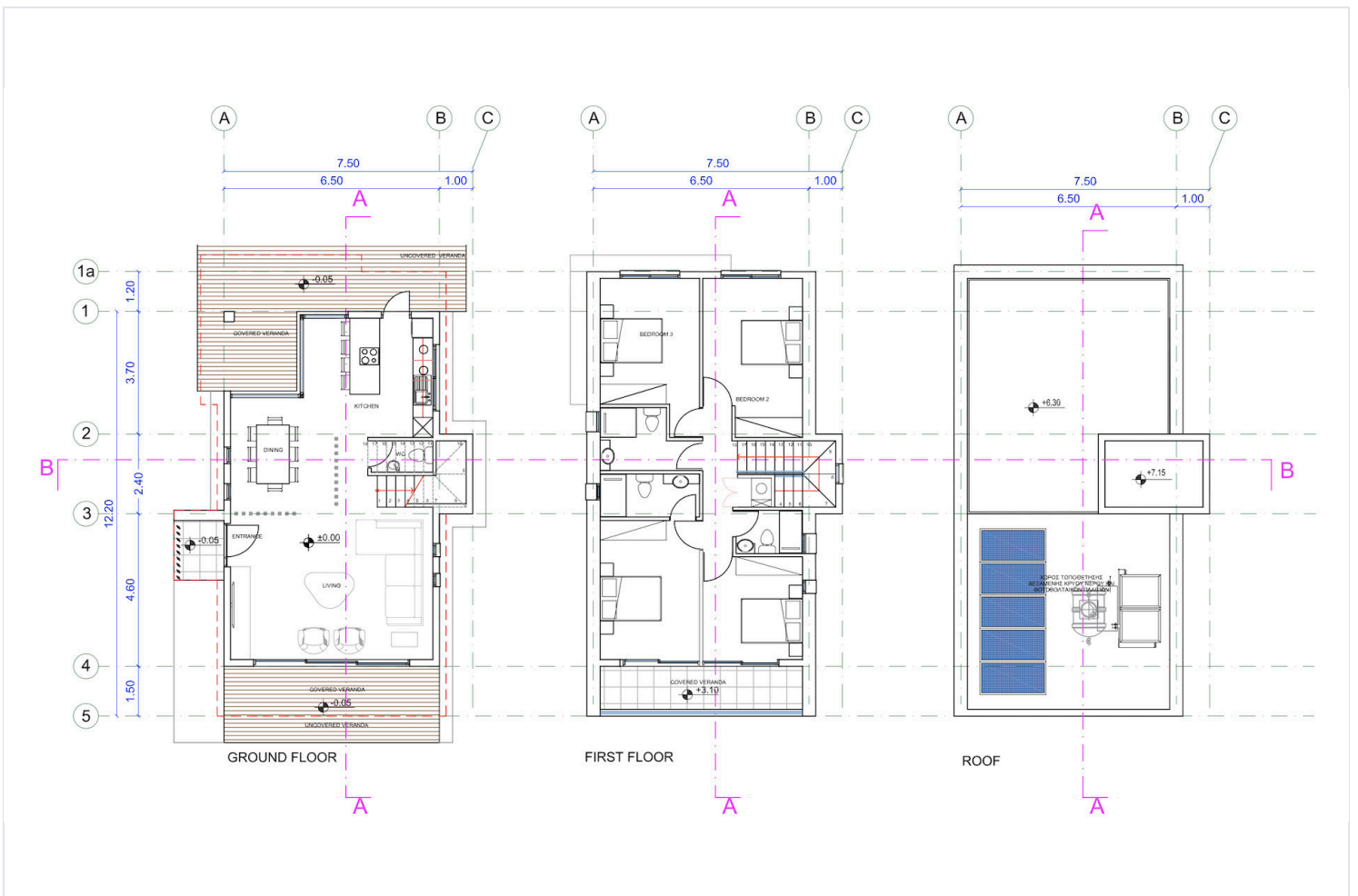
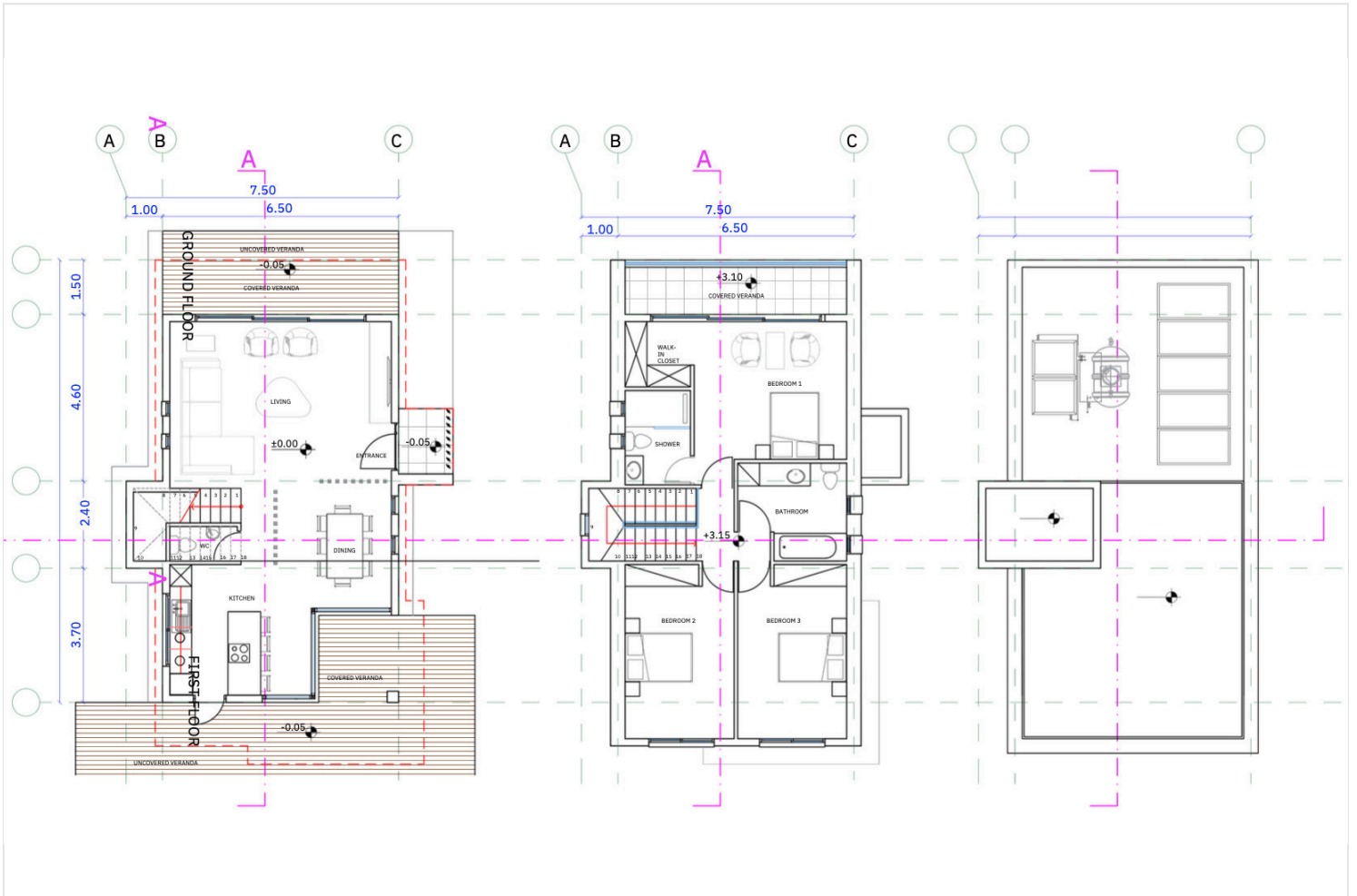
Each home is thoughtfully crafted to meet the needs of contemporary family living, offering both comfort and elegance. Immerse yourself in a friendly community, embrace the authentic Cyprus lifestyle, and discover the warmth of local culture in this picturesque setting.

Enjoy the prime location of Emba, with easy access to essential amenities and services. Within just a short drive, you'll find schools, shops, and leisure facilities, making this property the perfect choice for families seeking a well-connected, family-oriented neighborhood.

DELIVERY 18 MONTHS FROM CONTRACT SIGNING

PRICE INCLUDES:FRONT FENCE AND ENTRANCE GATE, 5KW SOLAR SYSTEM,  
BBQ BENCH, INTERCOM, ALARM SYSTEM, PROVISION FOR ELECTRIC CAR CHARGER.  
OPTIONAL SWIMMING POOL AND PATIO AREA: EUR 30,000 + VAT  
OPTIONAL LANDSCAPING:EUR 5,000 + VAT

# Floor plans



# Additional information

## Facilities

Aircondition, Provision

Heating, Provision

Parking, Covered

Pool, Optional

Solar water heater

## Features

Double glazing

Easy access to highway

Easy access to main roads

En suite shower

Fitted wardrobes

Guest WC

Modern design

Veranda

## Distances

Amenities

 800 m

Airport

 15 km

Sea

 3 km

Public transport

 200 m

Schools

 650 m

Resort

 8 km