

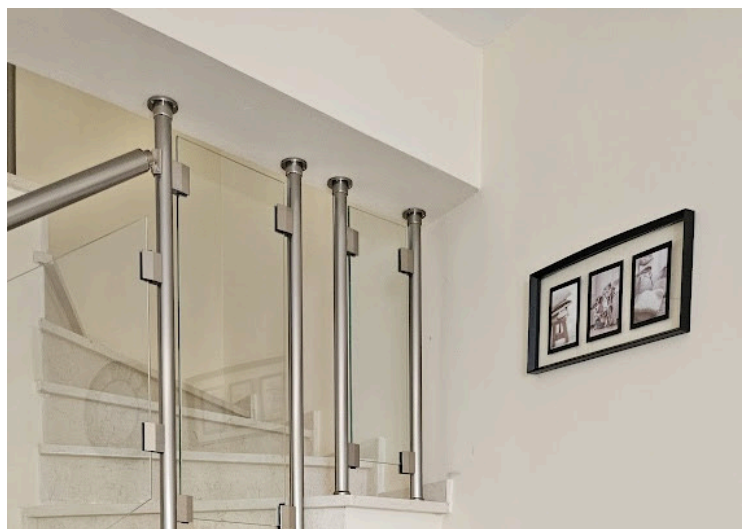
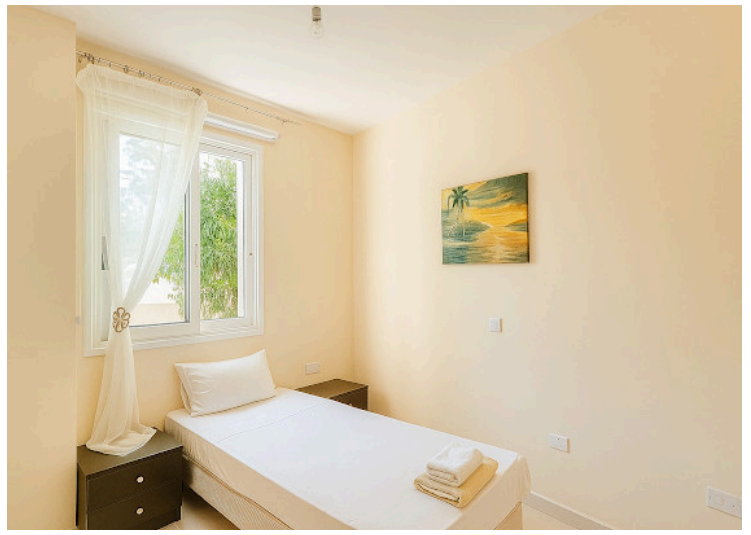
#10581

# 3 Bedroom Villa For Sale Mouttalos Paphos

📍 Town Centre, PAPHOS

€385,000 +VAT





# Overview

## Specifications

Bedrooms

 3


Bathrooms

 2

Covered

 151 m<sup>2</sup>

Type	<b>Semi-Detached Villa</b>
Toilets	<b>3</b>
Plot	<b>210 m<sup>2</sup></b>
Covered veranda	<b>18 m<sup>2</sup></b>

Year of construction	<b>2023</b>
Title deed	<b>No</b>
Furnished	<b>Fully furnished</b>
Energy efficiency rating	 <b>Exempt</b>

## Description

Discover a rare opportunity to own a villa in one of the most sought-after areas of Paphos – Tombs of the Kings. Situated just 400 meters from a popular sandy beach and within walking distance to the heart of Paphos, the project offers the perfect balance of convenience, comfort, and coastal charm.

These 3-bedroom detached and semi-detached villas are located on a quiet secondary road, just steps away from everything you need – supermarkets, shops, restaurants, cafes, bars, gyms, banks, pharmacies, and bus stops – all within 200 meters. Whether you're heading to the beach, the mall, or the vibrant tourist area, everything is close at hand.

Key Features:

- ? Prime Location: Less than 1km to Paphos centre & Mall
- ? 400m to the Beach
- ? Quiet yet Central Setting
- ? Some Sea Views & Landscaped Gardens
- ? 3 Spacious Bedrooms
- ? Bright & Airy Living Areas
- ? Granite Kitchen Counters
- ? Built-in Wardrobes
- ? Double Glazing Throughout
- ? Communal Swimming Pool
- ? Garden Space for Outdoor Living
- ? Water Pressure System
- ? Access to the Exclusive Avlida Club Facilities



# Additional information

## Facilities

Aircondition, Central system

Gated complex

Parking, Covered

Pool, Communal

## Features

Combined kitchen and dining area

Double glazing

Easy access to main roads

En suite shower

Garden

Granite countertops

Guest WC

Kitchen appliances

Modern design

Near amenities

Open plan

Pool view

Pressurized water system

Quiet area

Shower

Veranda

## Distances

Amenities



1 km

Airport



10 km

Sea



400 m