

#10463

4 Bedroom Luxury Sea View Villa For Sale Sea View Souni Limassol

 Souni, Limassol





€1,495,000 +VAT





Overview

Specifications

Bedrooms		Bathrooms		Covered	
 4		 5		 217 m ²	
Type		Detached Villa			
Plot		1100 m ²			
Year of construction		2027			
Furnished		Fully furnished			
Energy efficiency rating		 A			

Description

Discover the perfect blend of luxury, comfort, and eco-conscious living with this stunning villa in the serene and green area of Souni, Limassol.

Set on a spacious 1100 m² plot, this elegant 4-bedroom, 5-bathroom residence offers uninterrupted sea views, premium finishes, and a thoughtfully designed layout ideal for modern family life or a high-end holiday home.

Key Features:

- ? Panoramic Sea View from both floors
- ? Large Private Plot with lush green landscaping
- ?? Generous Ceiling Heights:
 - Ground Floor: 3.3 – 3.5 meters
 - First Floor: 3.3 – 3.9 meters
- ? Private Swimming Pool (4m x 8m)
- ?? Underfloor Heating throughout
- ?? Air Conditioning in all rooms
- ? A-Class Energy Efficiency with Photovoltaic Panels
- ?? Indoor & Outdoor Kitchens – perfect for entertaining
- ? Private Patio with Outdoor Fireplace
- ? Dedicated Laundry Room
- ? All Bathrooms with Windows for natural light and ventilation
- ? Covered Parking for 2 Cars
- With EV Charging Provisions

Additional Highlights:

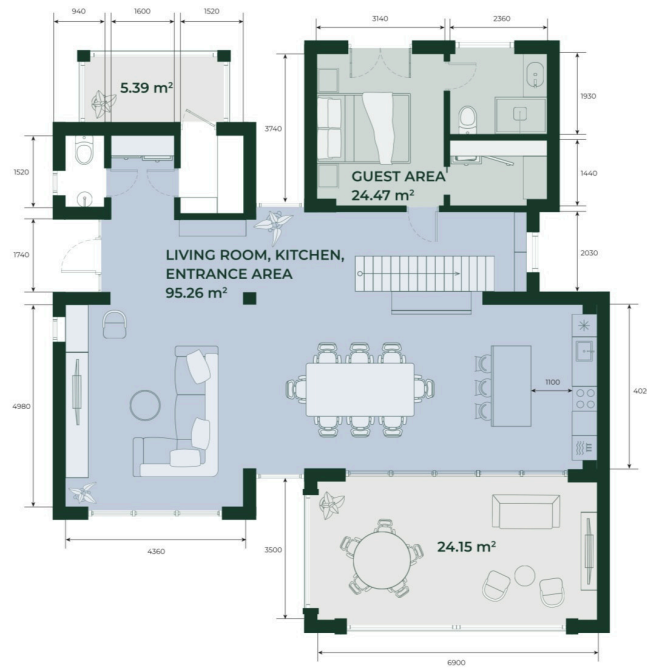
- ? Covered Internal Area: 217 m²
- ?? Covered Terraces: 29 m²
- ? BBQ Zone: 10 m²
- ? Covered Parking Area: 33 m²

Floor plans



Villa Type A

Total Internal area 217 m²
Covered terraces 29 m²



GROUND FLOOR

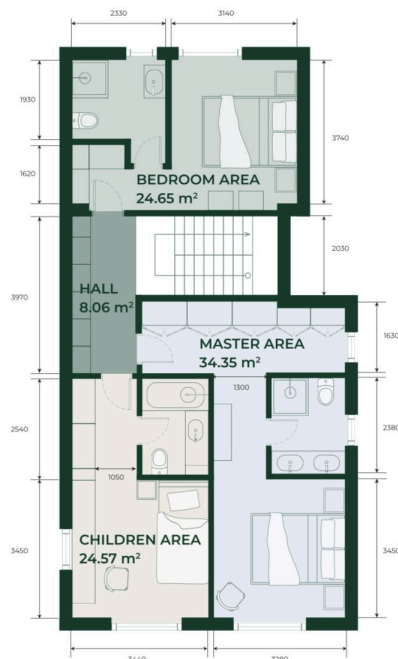
INTERNAL AREA 125.11 m²
COVERED TERRACES 29 m²

CONTACTS: +35 799 736 699 welcome@belleair.villas www.belleair.villas



Villa Type A

Total Internal area 217 m²
Covered terraces 29 m²



FIRST FLOOR

INTERNAL AREA 91.63 m²

CONTACTS: +35 799 736 699 welcome@belleair.villas www.belleair.villas

Additional information

Facilities

Aircondition, Central system	Childrens playground	Heating, Underfloor
Parking, Covered	Pool, Private	Solar photovoltaic panels
Spa	Tennis court	

Features

Double glazing	Electric car charger	Garden
Guest WC	Laundry room	Modern design
Near amenities	Open plan	Quiet area
Veranda		

Distances

Airport	Sea	Schools
 45 km	 15 km	 25 km