

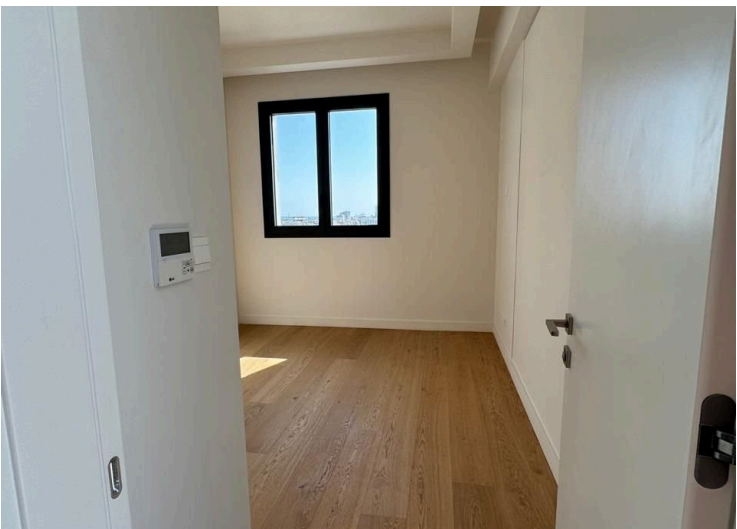
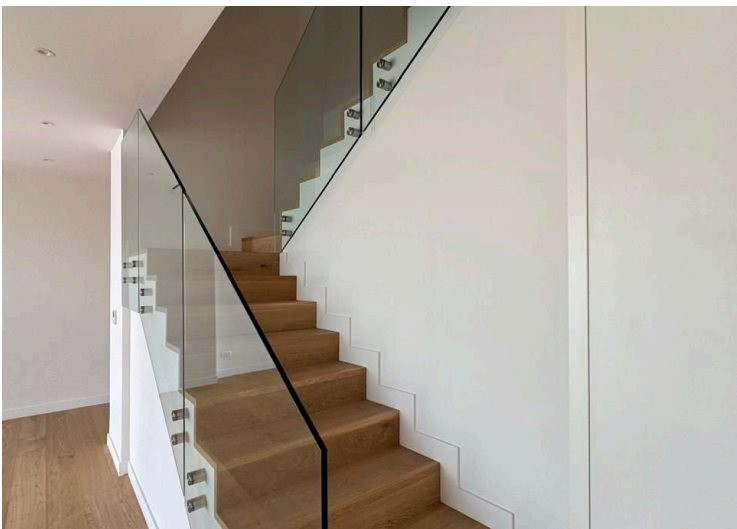
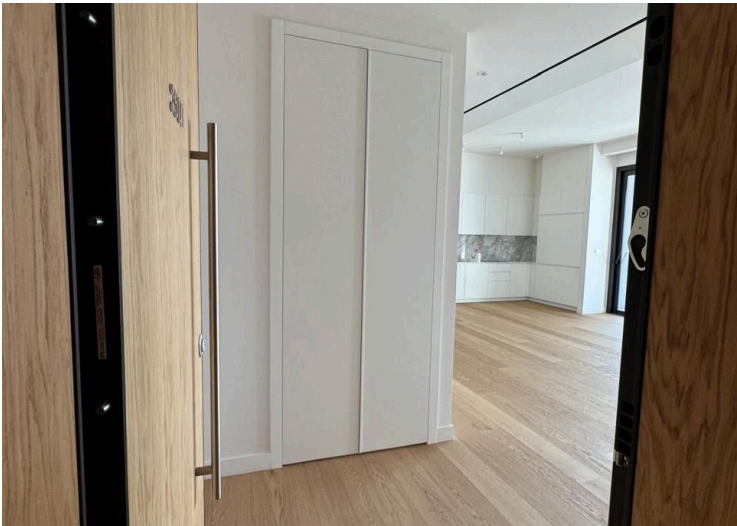
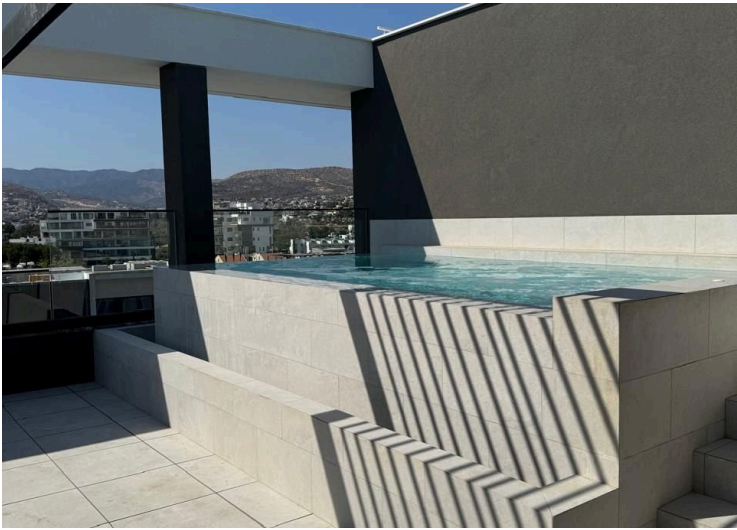
#10174

4 Bedroom Penthouse For Rent Limassol

📍 Potamos Germasogeia, Potamos Germasogeia, Limassol




€9,000 /month ~~€10,000~~





Overview

Specifications

Bedrooms		Bathrooms		Covered	
 4		 3		 270 m ²	
Type		Apartment			
Showers		2			
Toilets		3			
Plot		270 m ²			
Year of construction		2025			
Furnished		Unfurnished			
Energy efficiency rating		 Exempt			

Description

A residential complex offering nothing but luxury and elegance, created to satisfy all your expectations. All apartments and penthouses are carefully thought out to the smallest detail to create a luxurious lifestyle. Surrounded by the evening lights of Limassol and the stunning skyline, the location creates a refined atmosphere that defines a Mediterranean resort. An ideal place for unforgettable memories, relaxation and privacy. Enjoy the most exciting lifestyle of Limassol with the sparkling Mediterranean Sea just a few steps away.

The complex is a 5-storey building with 24 apartments and 4 luxury penthouses with private roofs and swimming pools. On the roof terraces of the residence there is a calm atmosphere with all the amenities corresponding to its unique design. A fully equipped gym and sauna will charge your body, mind and soul with energy and will be a great start to the day or simply relieve the stress accumulated during the day. Immerse yourself and relax in the cozy communal pool in a pleasant peaceful environment and immerse yourself in a real luxurious urban lifestyle with positive energy.

Main advantages:

- Unique design by a London architect;
- Right in the center of the tourist area of Limassol, 300 meters from the sea;
- Spacious layouts;
- Communal swimming pool, gym and sauna;
- Underground parking;
- 5-minute walk to the 5-star Apollonia Hotel, bars, cafes and the famous restaurants
- Penthouses with roof terraces and private pools;
- High-quality kitchens and plumbing;
- High standards of finishing (parquet, marble, high ceilings, hidden air conditioning and underfloor heating);
- Stunning views of the city and the sea from the penthouses

Additional information






Facilities

Aircondition, Central system	Elevator	Gated complex
Gym	Heating, Underfloor	Parking, Covered
Pool, Communal	Sauna	Solar water heater
Storage		

Features

Double glazing	Easy access to main roads	Electric car charger
En suite shower	Fitted wardrobes	Kitchen appliances
Modern design	Roof garden	Veranda, large
Walking distance to beach		

Distances

Amenities  500 m	Airport  60 km	Sea  300 m
Public transport  200 m	Schools  500 m	