

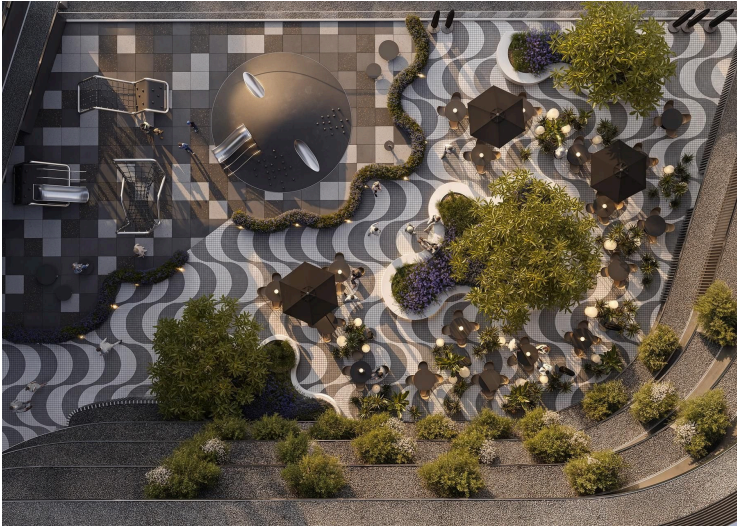
#10127

Studio For Sale Limassol

📍 Mesa Geitonia, Limassol





€189,000 +VAT





Overview

Specifications

| | | | | | |
|--|--|---|--|---|--|
| Bedrooms | | Bathrooms | | Covered | |
|  Studio | |  1 | |  40 m ² | |
| Type | | Apartment | | Status | |
| Toilets | | 1 | | Year of construction | |
| Plot | | 46 m ² | | Energy efficiency rating | |
| | | | | Off plan | |
| | | | | 2028 | |
| | | | |  A | |

Description

A a mixed-use development designed for those who seek balance, innovation and sustainability. Consisting of 2 commercial office buildings with exciting and value-added facilities, such as extensive co-work areas, a restaurant, a gym, a pool and 3 serviced residential buildings with studios, 1, 2 and 3-bedroom apartments.

Perfectly positioned at the crossroads of modern urban design and green living, that offers a BREEAM-certified, eco-friendly environment, making it the perfect choice for forward-thinking investors and young professionals.

Situated just off the highway, the development offers unparalleled connectivity to the Limassol’s key destinations. In just minutes, you can reach the vibrant city centre of Limassol, where a rich array of cultural, dining, and shopping experiences await. Also, several prestigious private schools located are nearby.

Studio from €179,000 + VAT

Additional information






Facilities

| | | |
|----------------------------|------------------|---------------------------|
| Aircondition, Split system | Elevator | Gated complex |
| Landscaped garden | Parking, Covered | Solar photovoltaic panels |
| Solar water heater | | |

Features

| | | |
|----------------------|--------------------------------|---------------------------|
| CCTV | Easy access to highway | Easy access to main roads |
| Electric car charger | Energy efficient doors/windows | Entrance gate, automated |
| Fitted wardrobes | Modern design | Veranda |

Distances

| | | |
|---|---|--|
| Amenities  1 km | Airport  60 km | Sea  3 km |
| Public transport  500 m | Schools  1 km | |