

#10104

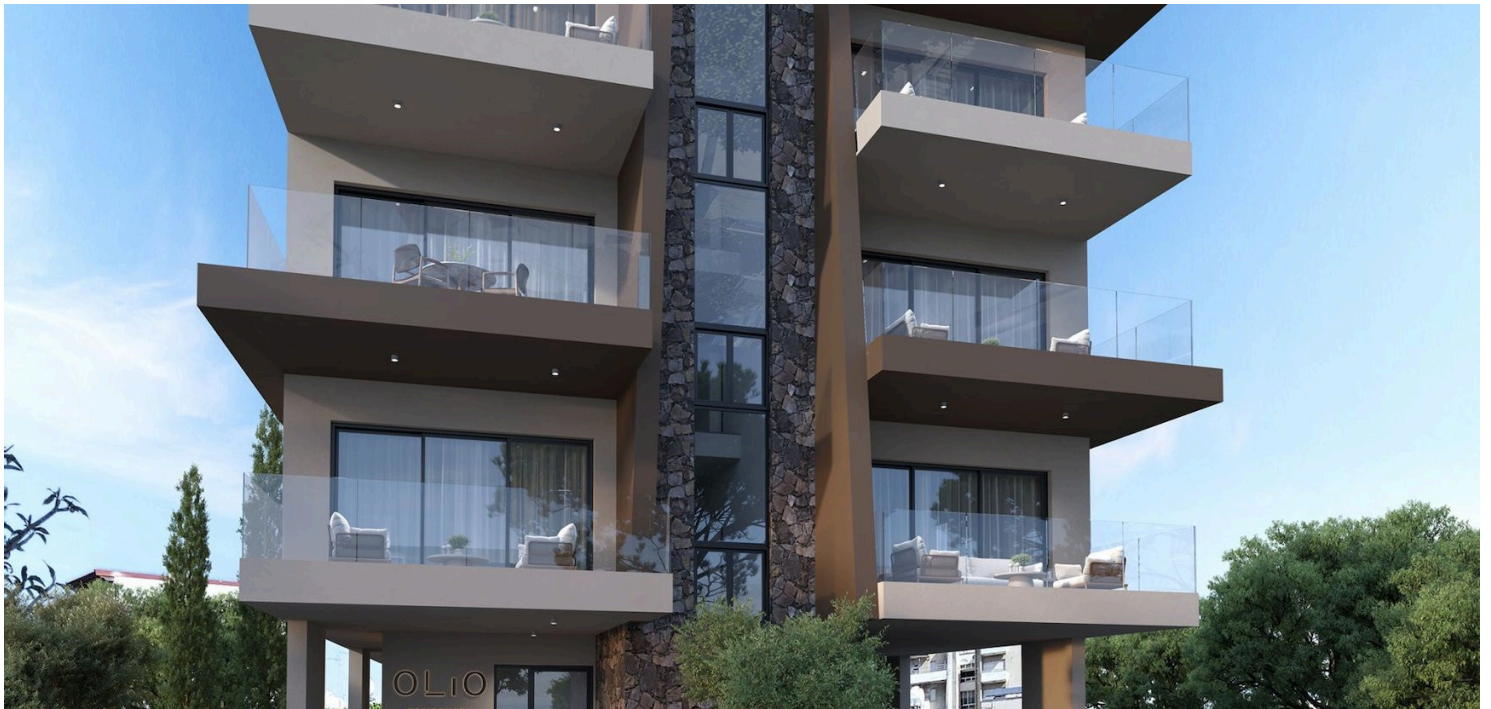
# 1 Bedroom Apartment For Sale Limassol

📍 Mesa Geitonia, Limassol

€265,000 +VAT













# Overview

## Specifications

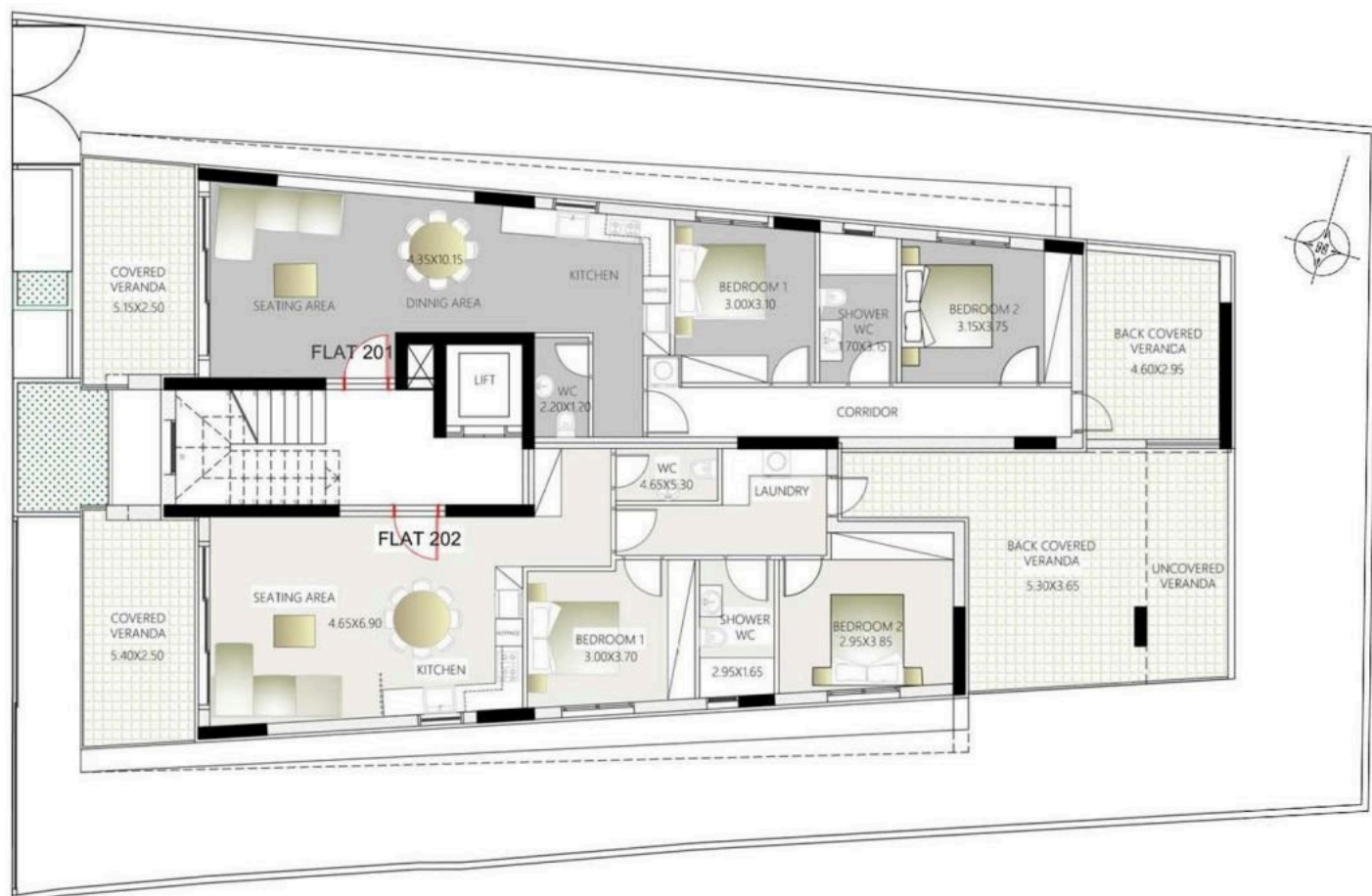
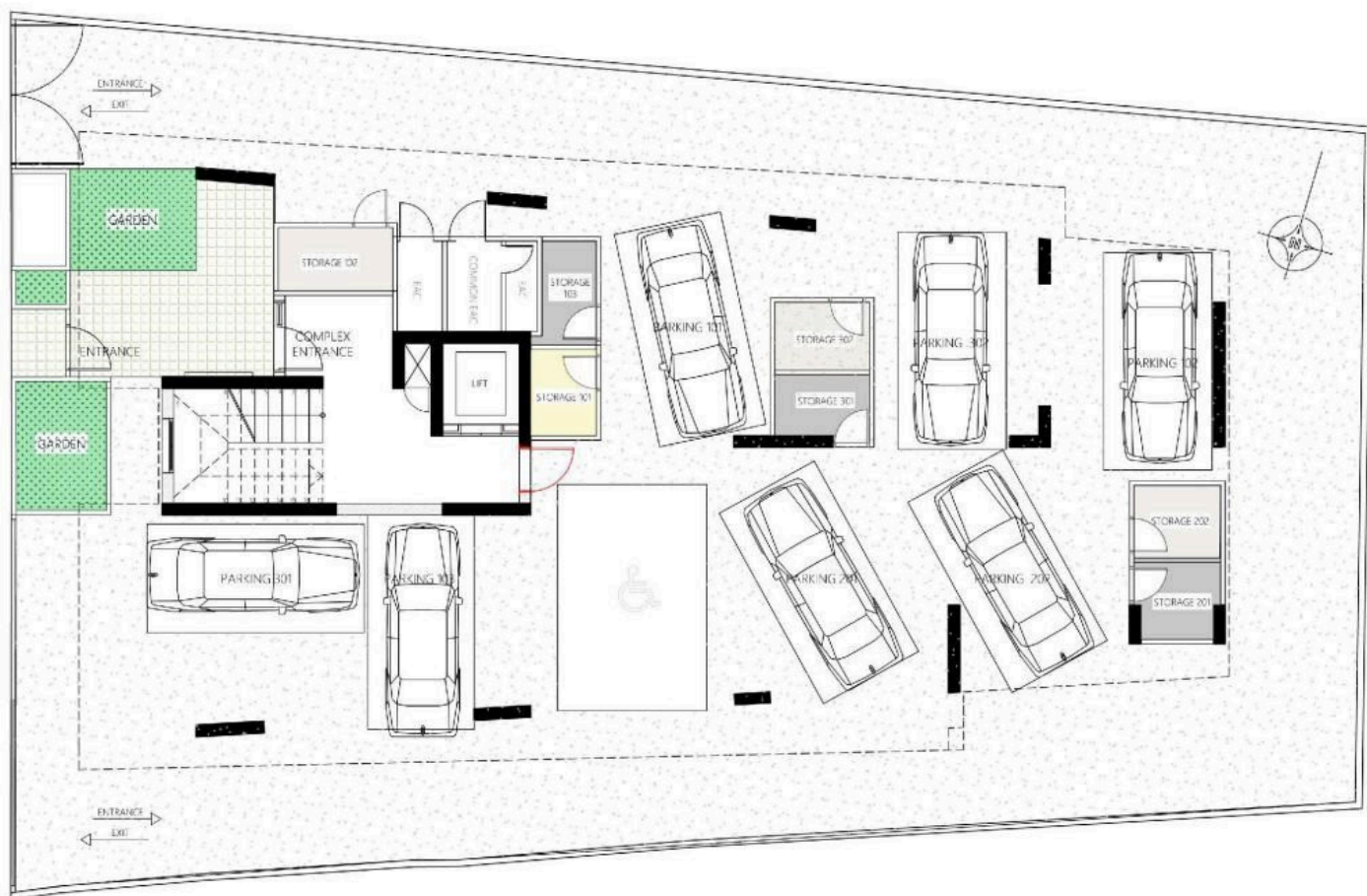
|   |  |   |  |   |  |
|---|--|---|--|---|--|
| Bedrooms  |  | Bathrooms   |  | Covered   |  |
|  1 |  |  1   |  |  50 m <sup>2</sup> |  |
| Type  |  | Apartment   |  |   |  |
| Showers   |  | 1   |  |   |  |
| Toilets   |  | 1   |  |   |  |
| Plot  |  | 57 m <sup>2</sup>   |  |   |  |
| Status  |  | Off plan  |  |   |  |
| Year of construction  |  | 2027  |  |   |  |
| Energy efficiency rating  |  |  A |  |   |  |

## Description

An exclusive investment opportunity, a premium residential development strategically located in the heart of Limassol, just moments away from the city business centre, the beach, and a wealth of amenities.

It is a three-floor development with a total of seven flats for sale, covering a combined area of 761 sqm on a 525 sqm plot of land. The building features six two-bedroom flats and one one-bedroom flat, designed to cater to the high-demand rental market of Limassol.

# Floor plans



\*BACK COV.

# Additional information





## Facilities

|                         |                    |                    |
|-------------------------|--------------------|--------------------|
| Aircondition, Provision | Elevator           | Heating, Provision |
| Parking, Covered        | Solar water heater | Storage            |

## Features

|                  |                           |                  |
|------------------|---------------------------|------------------|
| Double glazing   | Easy access to main roads | Fitted wardrobes |
| Modern design    | Near amenities            | Near bus route   |
| Rental potential |                           |                  |

## Distances

|   |  |   |
|---|--|---|
| Amenities<br> 300 m          | Airport<br> 60 km   | Sea<br> 2 km |
| Public transport<br> 300 m | Schools<br> 500 m |   |