

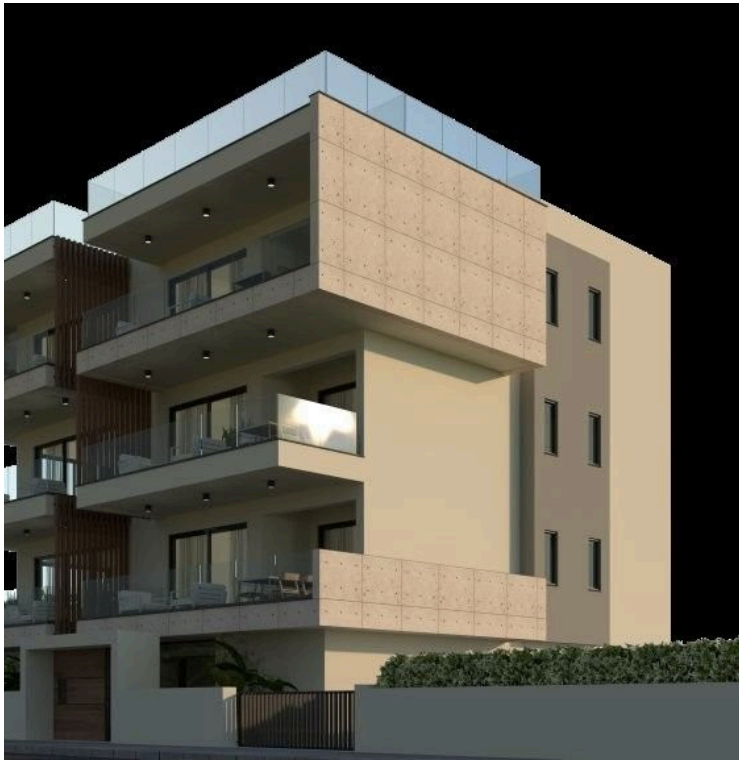
#10009

2 + 1 Bedroom Penthouse For Sale Limassol

📍 Columbia, Potamos Germasogeia, Limassol




€680,000 +VAT





Overview

Specifications

Bedrooms		Bathrooms		Covered	
 3		 2		 113 m ²	
Type		Apartment		Status	
Showers		1		Off plan	
Toilets		3		Year of construction	
Plot		198 m ²		2026	
				Energy efficiency rating	
				 A	

Description

An exceptional new development nestled in the serene suburbs of the Columbia Area, Limassol. Thoughtfully designed with modern living in mind, it combines impeccable architecture, premium residential facilities, and a prime location surrounded by nature. This upscale residence is ideal for families and professionals seeking both comfort and privacy.

Energy Efficiency Certificate: A

A small private complex of only 6 apartments, with spacious 3 or 2 bedroom units on each floor.

The specifications included are as follows:

- ?Underfloor Heating
- ?Custom Designed Italian Kitchens & Wardrobes
- ?Spanish / Italian Tiling
- ?Granite worktops
- ?Thermal Efficient Double glazed patio doors
- ?Storeroom & covered parking
- ?Central pressurized water system
- ?Solar Panel Water Heating
- ?Thermal Insulation throughout (extruded polystyrene)
- ?Sanitary ware Laufen
- ?Mixers & taps Grohe
- ?Video phone entry system
- ?Pipe in pipe plumping system
- ?Security door

Additional information




Facilities

Aircondition, Split system	Elevator	Gated complex
Heating, Underfloor	Parking, Covered	Solar water heater
Storage		

Features

Double glazing	Easy access to main roads	Entrance gate
Fitted wardrobes	Modern design	Near amenities
Near bus route	Roof garden	Veranda, large

Distances

Amenities  200 m	Airport  60 km	Sea  2 km
Public transport  200 m	Schools  500 m	